

PRODUCT INFORMATION

| | |
|---|---|
| Target | ALPL |
| Synonyms | HOPS; HPPA; HPPC; HPPI; HPPO; TNAP; TNALP; APTNAP; TNSALP; AP-TNAP; TNS-ALP |
| Description | Recombinant human ALPL Protein with C-terminal 10×His tag |
| Delivery | In Stock |
| Uniprot ID | P05186 |
| Expression Host | HEK293 |
| Tag | C-10×His tag |
| Molecular Characterization | ALPL(Leu18-Ser501) 10×His tag |
| Molecular Weight | The protein has a predicted molecular mass of 54.7 kDa after removal of the signal peptide. The apparent molecular mass of ALPL-His is approximately 55-70 kDa due to glycosylation. |
| Purity | The purity of the protein is greater than 85% as determined by SDS-PAGE and Coomassie blue staining. |
| Formulation & Reconstitution | Lyophilized from sterile PBS, pH 7.4. Normally 5 % - 8% trehalose is added as protectants before lyophilization. Please see Certificate of Analysis for specific instructions of reconstitution. |
| Storage & Shipping | Store at -20°C to -80°C for 12 months in lyophilized form. After reconstitution, if not intended for use within a month, aliquot and store at -80°C (Avoid repeated freezing and thawing). Lyophilized proteins are shipped at ambient temperature. |
| Background | This gene encodes a member of the alkaline phosphatase family of proteins. There are at least four distinct but related alkaline phosphatases: intestinal, placental, placental-like, and liver/bone/kidney (tissue non-specific). The first three are located together on chromosome 2, while the tissue non-specific form is located on chromosome 1. The product of this gene is a membrane bound glycosylated enzyme that is not expressed in any particular tissue and is, therefore, referred to as the tissue-nonspecific form of the enzyme. Alternative splicing results in multiple transcript variants, at least one of which encodes a preproprotein that is proteolytically processed to generate the mature enzyme. This enzyme may play a role in bone mineralization. Mutations in this gene have been linked to hypophosphatasia, a disorder that is characterized by hypercalcemia and skeletal defects. [provided by RefSeq, Oct 2015] |
| Usage | Research use only |
| Conjugate | Unconjugated |



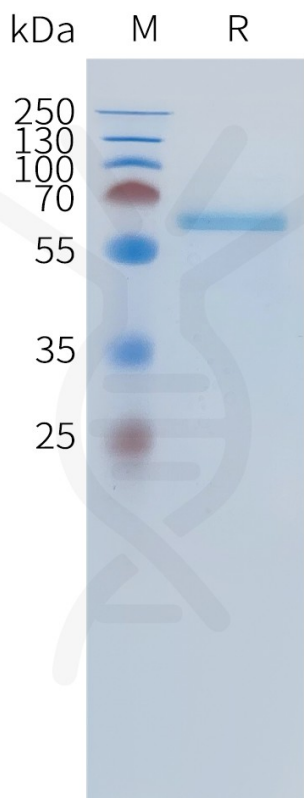


Figure 1. Human ALPL Protein, His Tag on SDS-PAGE under reducing condition.

DIMABIO CONFIDENTIAL

