

PRODUCT INFORMATION

Target	ADGRE1
Synonyms	EMR1;TM7LN3
Description	Recombinant human ADGRE1 protein with C-terminal 6×His tag
Delivery	In Stock
Uniprot ID	Q14246
Expression Host	HEK293
Tag	C-6×His Tag
Molecular Characterization	ADGRE1(His21-Asp599) 6×His tag
Molecular Weight	The protein has a predicted molecular mass of 63.9 kDa after removal of the signal peptide. The apparent molecular mass of ADGRE1-His is approximately 100-130 kDa due to glycosylation.
Purity	The purity of the protein is greater than 85% as determined by SDS-PAGE and Coomassie blue staining.
Formulation & Reconstitution	Lyophilized from sterile PBS, pH 7.4. Normally 5% - 8% trehalose is added as protectants before lyophilization. Please see Certificate of Analysis for specific instructions of reconstitution.
Storage & Shipping	Store at -20°C to -80°C for 12 months in lyophilized form. After reconstitution, if not intended for use within a month, aliquot and store at -80°C (Avoid repeated freezing and thawing). Lyophilized proteins are shipped at ambient temperature.
Background	This gene encodes a protein that has a domain resembling seven transmembrane G protein-coupled hormone receptors (7TM receptors) at its C-terminus. The N-terminus of the encoded protein has six EGF-like modules, separated from the transmembrane segments by a serine/threonine-rich domain, a feature reminiscent of mucin-like, single-span, integral membrane glycoproteins with adhesive properties. Multiple alternatively spliced transcript variants encoding different isoforms have been found for this gene. [provided by RefSeq, Jan 2012]
Usage	Research use only
Conjugate	Unconjugated



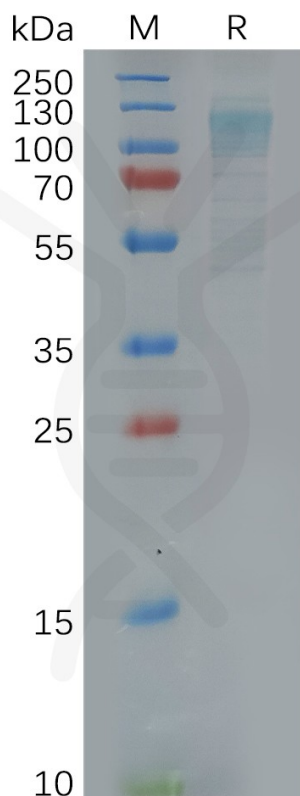


Figure 1. Human ADGRE1 Protein, His Tag on SDS-PAGE under reducing condition.

DIMABIO CONFIDENTIAL

