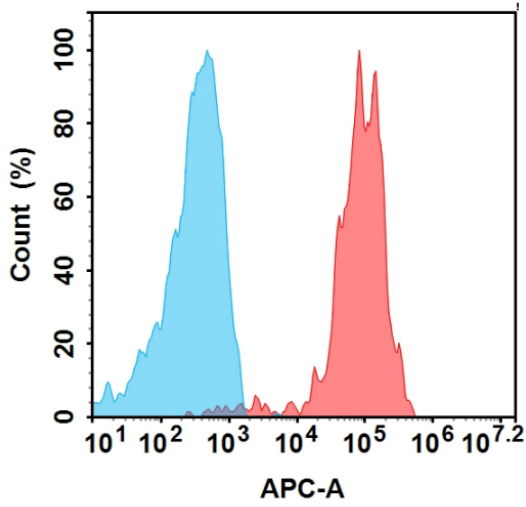


**PRODUCT INFORMATION**

<b>Target</b>	STEAP1
<b>Description</b>	Monoclonal Cell Line Derived from 293T Cells, Engineered for Stable Expression of Human STEAP1 Using Lentiviral Technology
<b>Host Cells</b>	293T
<b>Uniprot ID</b>	Q9UHE8
<b>Applications</b>	FACS Data
<b>Growth media</b>	DMEM+10% FBS+1% P.S+Gln+2 ug/mL Puromycin
<b>Package</b>	5E6 Cells/mL
<b>Suggested Control</b>	SKU: BME100208
<b>Warranty and Disclaimer</b>	1. Please inspect cells upon receipt and report any issues promptly. 2. We offer one-time replacements for issues reported within a week of receipt. 3. User-induced issues are not eligible for free replacements. 4. We do not accept liability for damages resulting from cell use, storage, or loss. 5. Feedback received more than one month after receipt will not be processed.
<b>Storage &amp; Shipping</b>	Cells are shipped using dry ice and require liquid nitrogen storage for long term preservation.
<b>Synonyms</b>	STEAP; PRSS24
<b>Background</b>	This gene is predominantly expressed in prostate tissue, and is found to be upregulated in multiple cancer cell lines. The gene product is predicted to be a six-transmembrane protein, and was shown to be a cell surface antigen significantly expressed at cell-cell junctions. [provided by RefSeq, Jul 2008]
<b>Usage</b>	For research use only.



### Hu\_STEAP1 293T Cell Line





-  Human IgG
-  Anti-STEAP1(xaluritamig without CD3 biosimilar) mAb (SKU: BME100208)

Figure 1. Flow cytometry analysis of human STEAP1 overexpression using Hu\_STEAP1 293T Cell Line (Cat. No. CEL100107) and Anti-STEAP1(xaluritamig without CD3 biosimilar) mAb (Cat. No. BME100208)

DIMABIO CONFIDENTIAL

