

PRODUCT INFORMATION

Target	SEZ6
Description	Monoclonal Cell Line Derived from K562 Cells, Engineered for Stable Expression of Human SEZ6 Using Lentiviral Technology
Host Cells	K562
Uniprot ID	Q53EL9
Applications	FACS Data
Growth media	RPMI-1640+10% FBS+1% P.S+1% Gln+2 ug/mL Puromycin
Package	5E6 Cells/mL
Suggested Control	SKU: DMC101096
Warranty and Disclaimer	1. Please inspect cells upon receipt and report any issues promptly. 2. We offer one-time replacements for issues reported within a week of receipt. 3. User-induced issues are not eligible for free replacements. 4. We do not accept liability for damages resulting from cell use, storage, or loss. 5. Feedback received more than one month after receipt will not be processed.
Storage & Shipping	Cells are shipped using dry ice and require liquid nitrogen storage for long term preservation.
Synonyms	BSRPC
Background	The protein encoded by this gene is thought to contain five cysteine-rich motifs that are similar to sushi domains, as well as two domains similar to the amino terminal half of the CUB (for complement C1r/C1s, Uegf, Bmp1) domain. Mutations in this gene have been associated with febrile seizures. [provided by RefSeq, Jul 2016]
Usage	For research use only.



Hu_SEZ6 K562 Cell Line

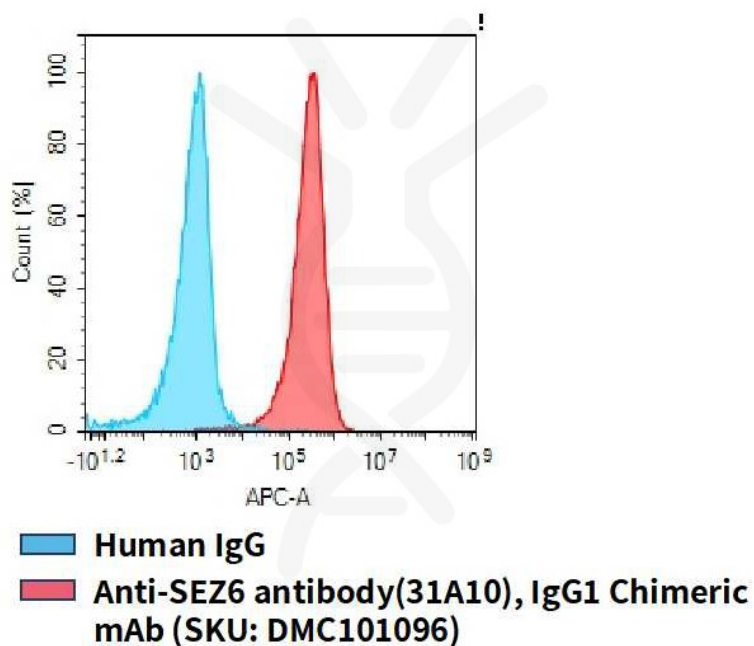


Figure 1. Flow cytometry analysis of human SEZ6 overexpression using Hu_SEZ6 K562 Cell Line (Cat. No. CEL100037) and Anti-SEZ6 antibody(31A10)IgG1 Chimeric mAb (Cat. No. DMC101096)

DIMABIO CONFIDENTIAL

