

**PRODUCT INFORMATION**

<b>Target</b>	GPC1
<b>Description</b>	Monoclonal Cell Line Derived from CHO-S Cells, Engineered for Stable Expression of Human GPC1 Using Lentiviral Technology
<b>Host Cells</b>	CHO-S
<b>Uniprot ID</b>	P35052
<b>Applications</b>	FACS Data
<b>Growth media</b>	DMEM+10% FBS+1% P.S+Gln+2 ug/mL Puromycin
<b>Package</b>	5E6 Cells/mL
<b>Suggested Control</b>	SKU: DMC101004
<b>Warranty and Disclaimer</b>	1. Please inspect cells upon receipt and report any issues promptly. 2. We offer one-time replacements for issues reported within a week of receipt. 3. User-induced issues are not eligible for free replacements. 4. We do not accept liability for damages resulting from cell use, storage, or loss. 5. Feedback received more than one month after receipt will not be processed.
<b>Storage &amp; Shipping</b>	Cells are shipped using dry ice and require liquid nitrogen storage for long term preservation.
<b>Synonyms</b>	Glypican 1;GPC1
<b>Background</b>	Cell surface heparan sulfate proteoglycans are composed of a membrane-associated protein core substituted with a variable number of heparan sulfate chains. Members of the glypican-related integral membrane proteoglycan family (GRIPS) contain a core protein anchored to the cytoplasmic membrane via a glycosyl phosphatidylinositol linkage. These proteins may play a role in the control of cell division and growth regulation. [provided by RefSeq, Jul 2008]
<b>Usage</b>	For research use only.



### Hu\_GPC1 CHO-S Cell Line

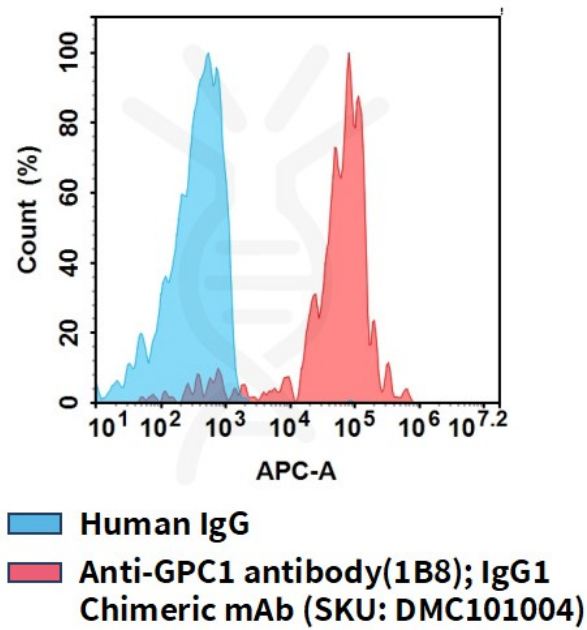


Figure 1. Flow cytometry analysis of human GPC1 overexpression using Hu\_GPC1 CHO-S Cell Line (Cat. No. CEL100111) and Anti-GPC1 antibody(1B8); IgG1 Chimeric mAb (Cat. No. DMC101004)

DIMABIO CONFIDENTIAL

