

**PRODUCT INFORMATION**

<b>Target</b>	CLDN6
<b>Description</b>	Monoclonal Cell Line Derived from CHO-S Cells, Engineered for Stable Expression of Human CLDN6 Using Lentiviral Technology
<b>Host Cells</b>	CHO-S
<b>Uniprot ID</b>	P56747
<b>Applications</b>	FACS Data
<b>Growth media</b>	DMEM+10% FBS+1% P.S+Gln+2 ug/mL Puromycin
<b>Package</b>	5E6 Cells/mL
<b>Suggested Control</b>	SKU: BME100082
<b>Warranty and Disclaimer</b>	1. Please inspect cells upon receipt and report any issues promptly. 2. We offer one-time replacements for issues reported within a week of receipt. 3. User-induced issues are not eligible for free replacements. 4. We do not accept liability for damages resulting from cell use, storage, or loss. 5. Feedback received more than one month after receipt will not be processed.
<b>Storage &amp; Shipping</b>	Cells are shipped using dry ice and require liquid nitrogen storage for long term preservation.
<b>Synonyms</b>	Claudin 6;Claudin-6;Skullin
<b>Background</b>	Tight junctions represent one mode of cell-to-cell adhesion in epithelial or endothelial cell sheets, forming continuous seals around cells and serving as a physical barrier to prevent solutes and water from passing freely through the paracellular space. These junctions are comprised of sets of continuous networking strands in the outwardly facing cytoplasmic leaflet, with complementary grooves in the inwardly facing extracytoplasmic leaflet. This gene encodes a component of tight junction strands, which is a member of the claudin family. The protein is an integral membrane protein and is one of the entry cofactors for hepatitis C virus. The gene methylation may be involved in esophageal tumorigenesis. This gene is adjacent to another family member CLDN9 on chromosome 16.
<b>Usage</b>	For research use only.



### Hu\_CLDN6 CHO-S Cell Line

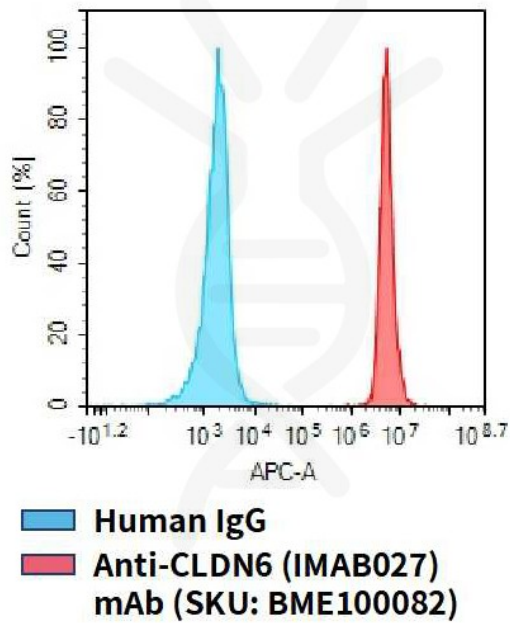


Figure 1. Flow cytometry analysis of human CLDN6 overexpression using Hu\_CLDN6 CHO-S Cell Line (Cat. No. CEL100066) and Anti-CLDN6 (IMAB027) mAb (Cat. No. BME100082)

DIMABIO CONFIDENTIAL

