

**PRODUCT INFORMATION**

<b>Target</b>	PSMA
<b>Synonyms</b>	PSM; FGCP; FOLH1; GCP2; FOLH1; mGCP; GCPII; NAALAD1
<b>Description</b>	Recombinant Cynomolgus PSMA protein with N-terminal 10×His tag
<b>Delivery</b>	In Stock
<b>Uniprot ID</b>	A0A2K5VNZ0
<b>Expression Host</b>	HEK293
<b>Tag</b>	N-10×His tag
<b>Molecular Characterization</b>	10×His tag PSMA(Lys44-Ala750)
<b>Molecular Weight</b>	The protein has a predicted molecular mass of 80.9 kDa after removal of the signal peptide. The apparent molecular mass of His-cPSMA is approximately 70-130 kDa due to glycosylation.
<b>Purity</b>	The purity of the protein is greater than 85% as determined by SDS-PAGE and Coomassie blue staining.
<b>Formulation &amp; Reconstitution</b>	Lyophilized from sterile PBS, pH 7.4. Normally 5 % - 8% trehalose is added as protectants before lyophilization. Please see Certificate of Analysis for specific instructions.
<b>Storage &amp; Shipping</b>	Store at -20°C to -80°C for 12 months in lyophilized form. After reconstitution, if not intended for use within a month, aliquot and store at -80°C (Avoid repeated freezing and thawing). Lyophilized proteins are shipped at ambient temperature.
<b>Background</b>	This gene encodes a type II transmembrane glycoprotein belonging to the M28 peptidase family. The protein acts as a glutamate carboxypeptidase on different alternative substrates, including the nutrient folate and the neuropeptide N-acetyl-l-aspartyl-l-glutamate and is expressed in a number of tissues such as prostate, central and peripheral nervous system and kidney. A mutation in this gene may be associated with impaired intestinal absorption of dietary folates, resulting in low blood folate levels and consequent hyperhomocysteinemia. Expression of this protein in the brain may be involved in a number of pathological conditions associated with glutamate excitotoxicity. In the prostate the protein is up-regulated in cancerous cells and is used as an effective diagnostic and prognostic indicator of prostate cancer. This gene likely arose from a duplication event of a nearby chromosomal region. Alternative splicing gives rise to multiple transcript variants encoding several different isoforms. [provided by RefSeq, Jul 2010]
<b>Usage</b>	Research use only
<b>Conjugate</b>	Unconjugated



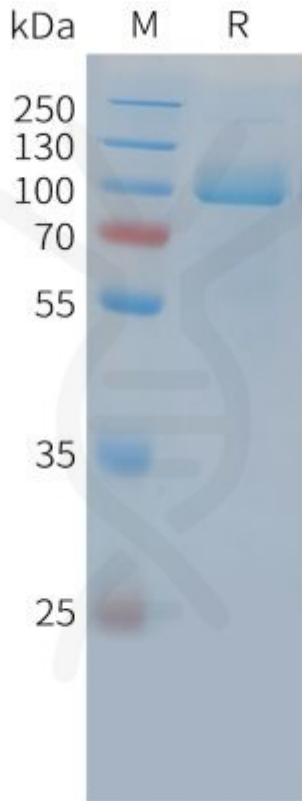


Figure 1. Cynomolgus PSMA Protein, His Tag on SDS-PAGE under reducing condition.

DIMABIO CONFIDENTIAL

