

PRODUCT INFORMATION

| | |
|---|---|
| Target | IgHE |
| Synonyms | Immunoglobulin heavy constant epsilon;IGHE |
| Description | Recombinant Cynomolgus IgHE protein with C-terminal 6×His tag |
| Delivery | In Stock |
| Uniprot ID | A0A7N9DC98 |
| Expression Host | HEK293 |
| Tag | C-6×His Tag |
| Molecular Characterization | IgHE(Ala1-Lys432) 6×His tag |
| Molecular Weight | The protein has a predicted molecular mass of 48.3 kDa after removal of the signal peptide. The apparent molecular mass of cIgHE-His is approximately 55-70 kDa due to glycosylation. |
| Purity | The purity of the protein is greater than 85% as determined by SDS-PAGE and Coomassie blue staining. |
| Formulation & Reconstitution | Lyophilized from sterile PBS, pH 7.4. Normally 5 % - 8% trehalose is added as protectants before lyophilization. Please see Certificate of Analysis for specific instructions of reconstitution. |
| Storage & Shipping | Store at -20°C to -80°C for 12 months in lyophilized form. After reconstitution, if not intended for use within a month, aliquot and store at -80°C (Avoid repeated freezing and thawing). Lyophilized proteins are shipped at ambient temperature. |
| Background | IGHE (Immunoglobulin Heavy Constant Epsilon) is a Protein Coding gene. Diseases associated with IGHE include Toxocariasis and Latex Allergy. Among its related pathways are Cytokine Signaling in Immune system and RET signaling. Gene Ontology (GO) annotations related to this gene include antigen binding. An important paralog of this gene is IGHG2. |
| Usage | Research use only |



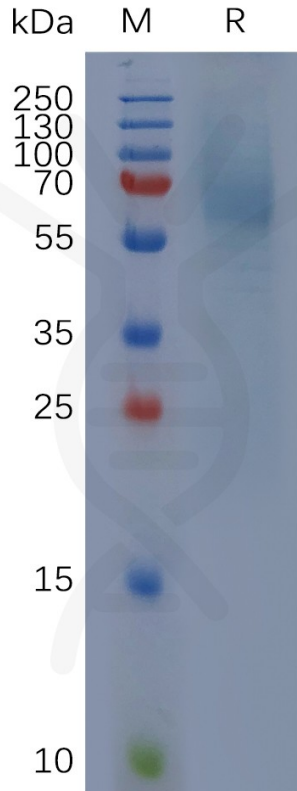


Figure 1. Cynomolgus IgHE Protein, His Tag on SDS-PAGE under reducing condition.

