

**PRODUCT INFORMATION**

<b>Target</b>	CDH17
<b>Synonyms</b>	HPT1; CDH16; HPT-1
<b>Description</b>	Recombinant Cynomolgus CDH17 protein with C-terminal 10×His tag
<b>Delivery</b>	In Stock
<b>Uniprot ID</b>	A0A2K5X8I8
<b>Expression Host</b>	HEK293
<b>Tag</b>	C-10×His tag
<b>Molecular Characterization</b>	CDH17(Lys30-Thr792) 10×His tag
<b>Molecular Weight</b>	The protein has a predicted molecular mass of 86.0 kDa after removal of the signal peptide.
<b>Purity</b>	The purity of the protein is greater than 85% as determined by SDS-PAGE and Coomassie blue staining.
<b>Formulation &amp; Reconstitution</b>	Lyophilized from sterile PBS, pH 7.4. Normally 5% - 8% trehalose is added as protectants before lyophilization. Please see Certificate of Analysis for specific instructions.
<b>Storage &amp; Shipping</b>	Store at -20°C to -80°C for 12 months in lyophilized form. After reconstitution, if not intended for use within a month, aliquot and store at -80°C (Avoid repeated freezing and thawing). Lyophilized proteins are shipped at ambient temperature.
<b>Background</b>	This gene is a member of the cadherin superfamily, genes encoding calcium-dependent, membrane-associated glycoproteins. The encoded protein is cadherin-like, consisting of an extracellular region, containing 7 cadherin domains, and a transmembrane region but lacking the conserved cytoplasmic domain. The protein is a component of the gastrointestinal tract and pancreatic ducts, acting as an intestinal proton-dependent peptide transporter in the first step in oral absorption of many medically important peptide-based drugs. The protein may also play a role in the morphological organization of liver and intestine. Alternative splicing results in multiple transcript variants. [provided by RefSeq, Jan 2009]
<b>Usage</b>	Research use only
<b>Conjugate</b>	Unconjugated



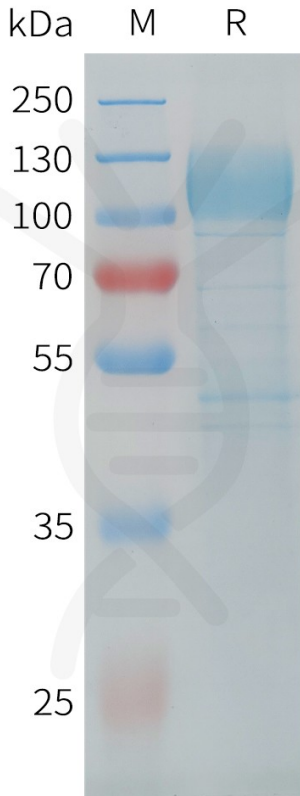


Figure 1. Cynomolgus CDH17 Protein, His Tag on SDS-PAGE under reducing condition.

### Cynomolgus CDH17, His Tagged protein ELISA

0.05  $\mu$ g of Cynomolgus CDH17, His tagged protein per well

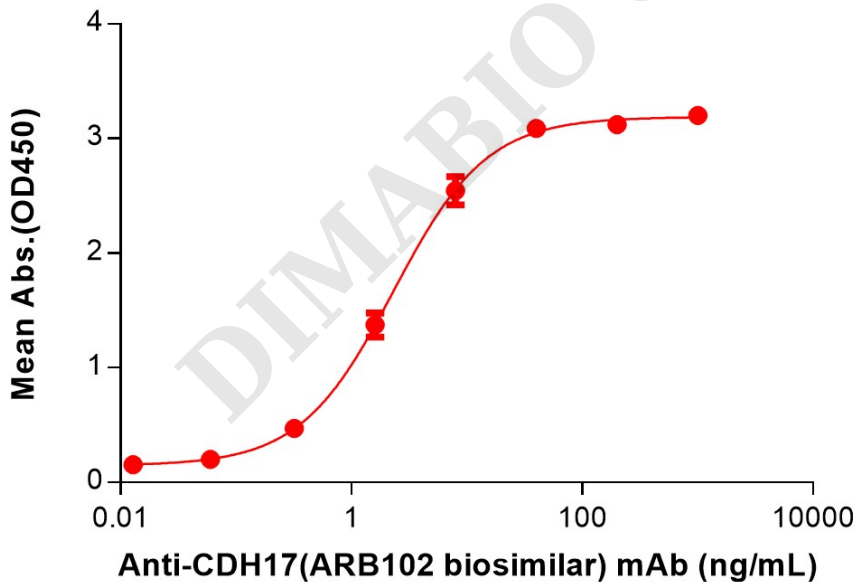


Figure 2. ELISA plate pre-coated by 2  $\mu$ g/mL (100  $\mu$ L/well) Cynomolgus CDH17 Protein, His Tag (PME-C100029) can bind Anti-CDH17(ARB102 biosimilar) mAb (BME100198) in a linear range of 3.20-40 ng/mL.



### Cynomolgus CDH17, His Tagged protein ELISA

0.05  $\mu$ g of Cynomolgus CDH17, His tagged protein per well

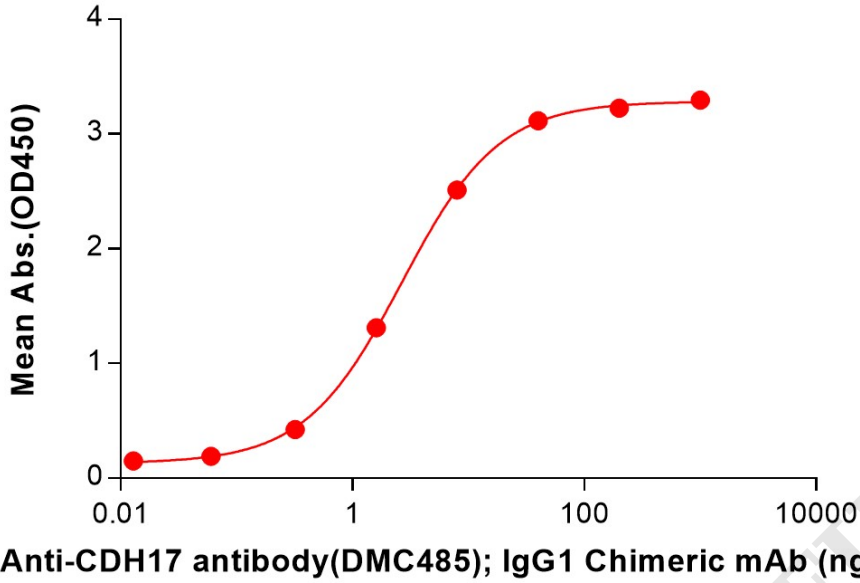


Figure 3. ELISA plate pre-coated by 2  $\mu$ g/mL (100  $\mu$ L/well) Cynomolgus CDH17 Protein, His Tag (PME-C100029) can bind Anti-CDH17 antibody(DMC485); IgG1 Chimeric mAb (DMC100485) in a linear range of 3.20-40 ng/mL.

