

**PRODUCT INFORMATION**

<b>Target</b>	PDL1
<b>Synonyms</b>	B7-H, B7H1, CD274, PDCD1L1, PDCD1LG1, PDL1, hPD-L1
<b>Description</b>	Recombinant Canine PD-L1 protein with C-terminal mouse Fc tag
<b>Delivery</b>	In Stock
<b>Uniprot ID</b>	NP_001278901.1
<b>Expression Host</b>	HEK293
<b>Tag</b>	C-Mouse Fc tag
<b>Molecular Characterization</b>	PD-L1(Phe19-His238) mFc(Pro99-Lys330)
<b>Molecular Weight</b>	The protein has a predicted molecular mass of 51.2 kDa after removal of the signal peptide.
<b>Purity</b>	The purity of the protein is greater than 95% as determined by SDS-PAGE and Coomassie blue staining.
<b>Formulation &amp; Reconstitution</b>	Lyophilized from sterile PBS, pH 7.4. Normally 5 % - 8% trehalose is added as protectants before lyophilization. Please see Certificate of Analysis for specific instructions of reconstitution.
<b>Storage &amp; Shipping</b>	Store at -20°C to -80°C for 12 months in lyophilized form. After reconstitution, if not intended for use within a month, aliquot and store at -80°C (Avoid repeated freezing and thawing). Lyophilized proteins are shipped at ambient temperature.
<b>Background</b>	This gene encodes an immune inhibitory receptor ligand that is expressed by hematopoietic and non-hematopoietic cells, such as T cells and B cells and various types of tumor cells. The encoded protein is a type I transmembrane protein that has immunoglobulin V-like and C-like domains. Interaction of this ligand with its receptor inhibits T-cell activation and cytokine production. During infection or inflammation of normal tissue, this interaction is important for preventing autoimmunity by maintaining homeostasis of the immune response. In tumor microenvironments, this interaction provides an immune escape for tumor cells through cytotoxic T-cell inactivation. Expression of this gene in tumor cells is considered to be prognostic in many types of human malignancies, including colon cancer and renal cell carcinoma. Alternative splicing results in multiple transcript variants. [provided by RefSeq, Sep 2015]
<b>Usage</b>	Research use only
<b>Conjugate</b>	Unconjugated



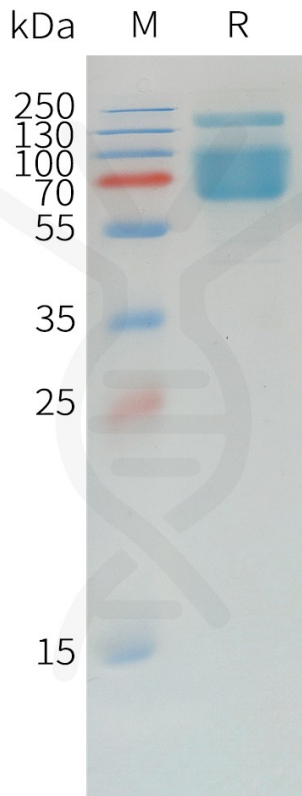


Figure 1. Canine PD-L1 Protein, mFc Tag on SDS-PAGE under reducing condition.

### Canine PD-L1, mFc Tagged protein ELISA

0.2  $\mu\text{g}$  of Canine PD-1, hFc tagged protein per well

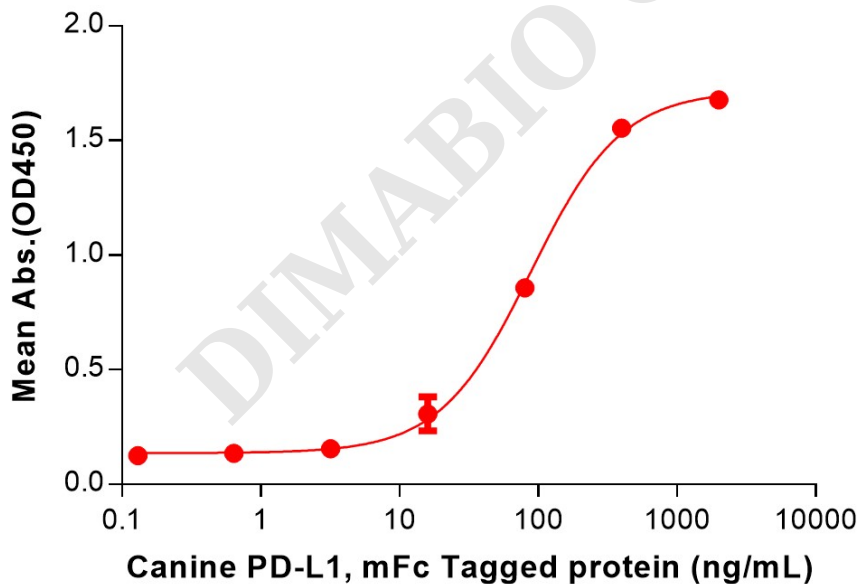


Figure 2. ELISA plate pre-coated by 2  $\mu\text{g}/\text{mL}$  (100  $\mu\text{L}/\text{well}$ ) Canine PD-1 Protein, hFc Tag (PME-D100008) can bind Canine PD-L1 Protein, mFc Tag (PME-D100007) in a linear range of 16-400 ng/mL.



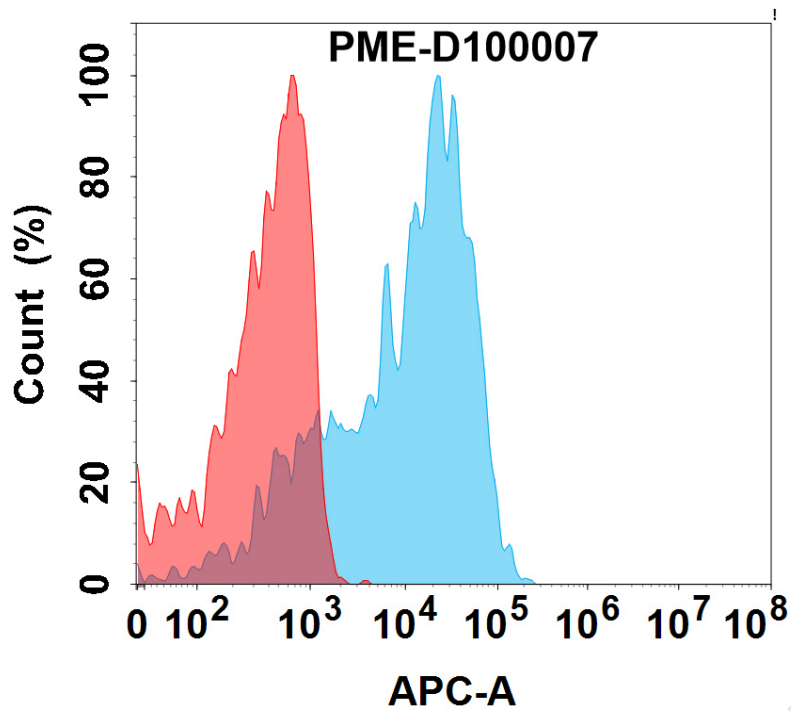


Figure 3. Flow cytometry analysis with 1 $\mu$ g/mL Canine PD-L1 Protein, mFc Tag(PME-D100007) on Expi293 cells transfected with Canine PD-1 protein (Blue histogram) or Expi293 transfected with irrelevant protein (Red histogram).

DIMABIO CONFIDENTIAL

