

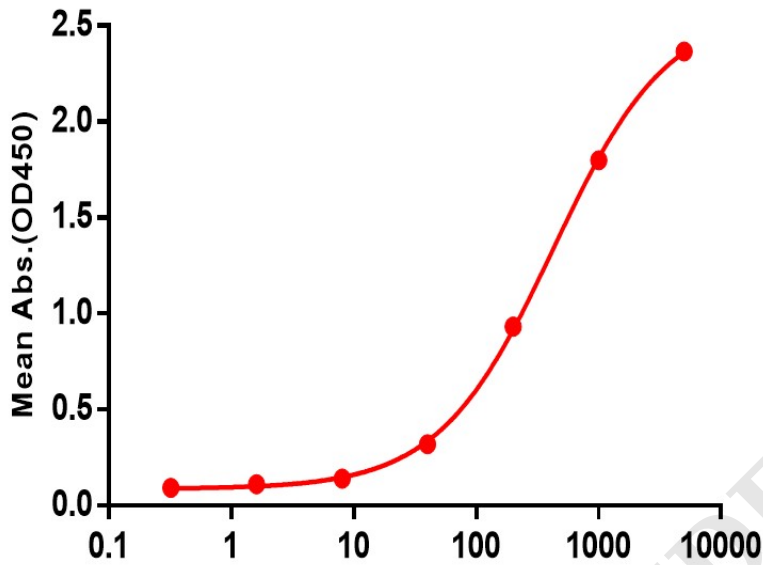
PRODUCT INFORMATION

| | |
|---|--|
| Tag | Biotinylated, C-Flag&Avi Tag |
| Target | CLDN18.2 |
| Synonyms | Claudin 18.2 |
| Description | Biotinylated Human CLDN18.2 full length protein-synthetic nanodisc |
| Delivery | In Stock |
| Uniprot ID | P56856-2 |
| Expression Host | HEK293 |
| Protein Families | Transmembrane |
| Protein Pathways | Cell adhesion molecules (CAMs), Leukocyte transendothelial migration, Tight junction |
| Molecular Weight | The human full length CLDN18.2 Protein has a MW of 32.5 kDa |
| Formulation & Reconstitution | Lyophilized from nanodisc solubilization buffer (20 mM Tris-HCl, 150 mM NaCl, pH 8.0). Normally 5% - 8% trehalose is added as protectants before lyophilization. Please see Certificate of Analysis for specific instructions. |
| Storage & Shipping | Store at -20°C to -80°C for 12 months in lyophilized form. After reconstitution, if not intended for use within a month, aliquot and store at -80°C (Avoid repeated freezing and thawing). Lyophilized proteins are shipped at ambient temperature. |
| Background | This gene encodes a member of the claudin family. Claudins are integral membrane proteins and components of tight junction strands. Tight junction strands serve as a physical barrier to prevent solutes and water from passing freely through the paracellular space between epithelial or endothelial cell sheets, and also play critical roles in maintaining cell polarity and signal transductions. This gene is upregulated in patients with ulcerative colitis and highly overexpressed in infiltrating ductal adenocarcinomas. PKC/MAPK/AP-1 (protein kinase C/mitogen-activated protein kinase/activator protein-1) dependent pathway regulates the expression of this gene in gastric cells. Alternatively spliced transcript variants encoding different isoforms have been identified. [provided by RefSeq, Jun 2010] |
| Usage | Research use only |



Biotinylated Human CLDN18.2 full length protein-synthetic nanodisc ELISA

0.2 μ g of Anti-CLDN18.2 Rabbit mAb protein per well



Biotinylated Human CLDN18.2 full length protein-synthetic nanodisc (ng/mL)

Figure 1. ELISA plate pre-coated by 2 μ g/mL (100 μ L/well) Anti-CLDN18.2 antibody(DM179); Rabbit mAb (DME100179) can bind Biotinylated Human CLDN18.2 full length protein-synthetic nanodisc (FLP100014B) in a linear range of 40-5000 ng/mL. In order to specifically detect FLP100014B, HRP Conjugated Streptavidin was used as detection antibody.

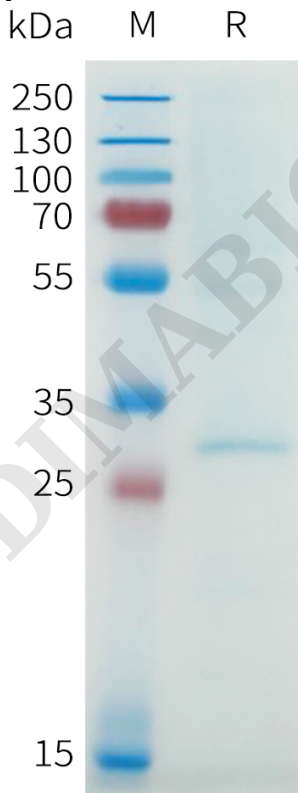


Figure 2. Biotinylated Human CLDN18.2-Nanodisc, Flag Tag on SDS-PAGE

