

**PRODUCT INFORMATION**

|   |   |
|---|---|
| <b>Clone ID</b>                         | DM91  |
| <b>Target</b>                           | GPRC5D  |
| <b>Synonyms</b>                         | GPRC5D  |
| <b>Host Species</b>                     | Rabbit  |
| <b>Description</b>                      | Biotinylated Anti-GPRC5D antibody(DM91); Rabbit mAb   |
| <b>Delivery</b>                         | 2-3 weeks   |
| <b>Uniprot ID</b>                       | Q9NZD1  |
| <b>IgG type</b>                         | Rabbit IgG  |
| <b>Clonality</b>                        | Monoclonal  |
| <b>Reactivity</b>                       | Human   |
| <b>Applications</b>                     | Flow Cyt  |
| <b>Recommended Dilutions</b>            | Flow Cyt 12.5ug/mL  |
| <b>Purification</b>                     | Purified from cell culture supernatant by affinity chromatography   |
| <b>Formulation &amp; Reconstitution</b> | Lyophilized from sterile PBS, pH 7.4. Normally 5% - 8% trehalose is added as protectants before lyophilization. Please see Certificate of Analysis for specific instructions of reconstitution.   |
| <b>Storage &amp; Shipping</b>           | Store at -20°C to -80°C for 12 months in lyophilized form. After reconstitution, if not intended for use within a month, aliquot and store at -80°C (Avoid repeated freezing and thawing). Lyophilized proteins are shipped at ambient temperature. |
| <b>Background</b>                       | The protein encoded by this gene is a member of the G protein-coupled receptor family; however, the specific function of this gene has not yet been determined.   |
| <b>Usage</b>                            | Research use only   |
| <b>Conjugate</b>                        | Biotinylated  |



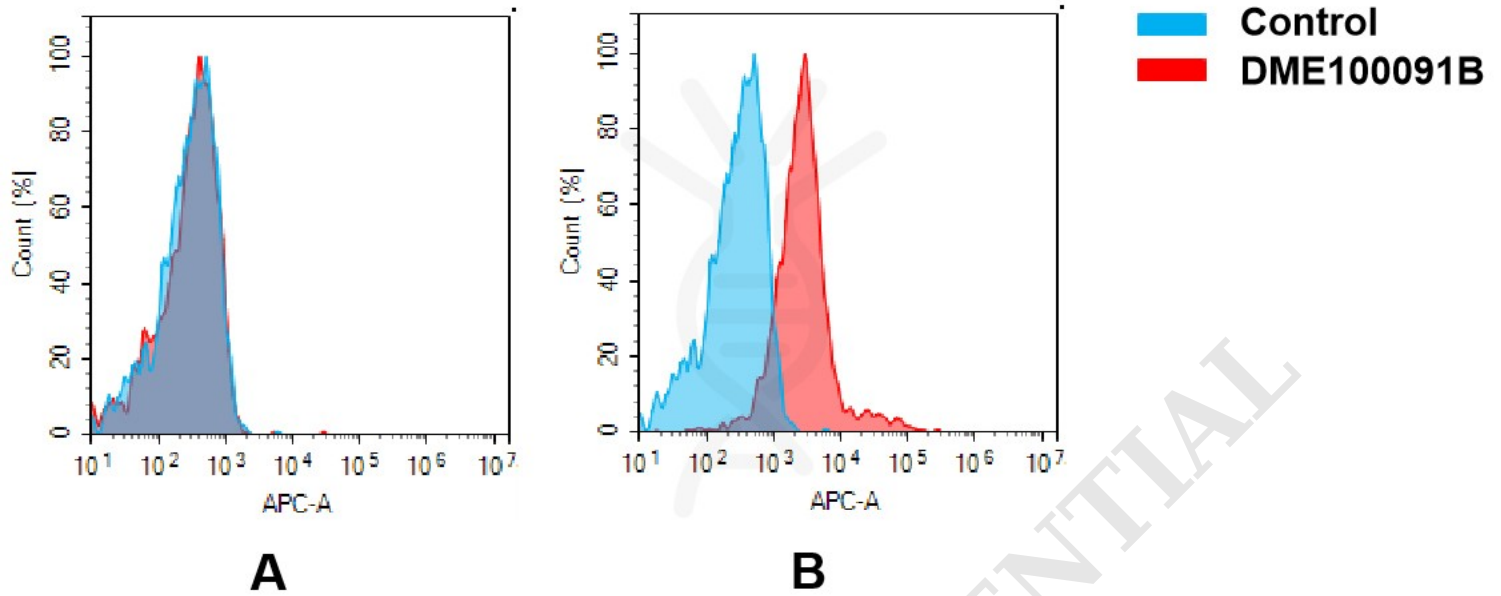


Figure 1. Flow cytometry analysis of antigen binding of rabbit anti-human GPRC5D mAb(DME100091B).

(A) DME100091B does not bind to Jurkat cells that do not express GPRC5D.

(B) A clear peak shift of DME100091B was seen compared to the control when incubated with GPRC5D-expressing MM.1S cells, indicating strong binding of DME100091B to GPRC5D. Antibodies were incubated at 12.5 ug/mL.

