

PRODUCT INFORMATION

Clone ID	DMC682
Target	CD166
Synonyms	CD166; MEMD
Host Species	Rabbit
Description	Biotinylated Anti-CD166 antibody(DMC682); IgG1 Chimeric mAb
Delivery	2-3 weeks
Uniprot ID	Q13740-1
IgG type	Rabbit/Human Fc chimeric IgG1
Clonality	Monoclonal
Reactivity	Human
Applications	Flow Cyt
Recommended Dilutions	Flow Cyt 1:100
Purification	Purified from cell culture supernatant by affinity chromatography
Formulation & Reconstitution	Lyophilized from sterile PBS, pH 7.4. Normally 5 % - 8% trehalose is added as protectants before lyophilization. Please see Certificate of Analysis for specific instructions of reconstitution.
Storage & Shipping	Store at -20°C to -80°C for 12 months in lyophilized form. After reconstitution, if not intended for use within a month, aliquot and store at -80°C (Avoid repeated freezing and thawing). Lyophilized proteins are shipped at ambient temperature.
Background	This gene encodes activated leukocyte cell adhesion molecule (ALCAM); also known as CD166 (cluster of differentiation 166); which is a member of a subfamily of immunoglobulin receptors with five immunoglobulin-like domains (VVC2C2C2) in the extracellular domain. This protein binds to T-cell differentiation antigene CD6; and is implicated in the processes of cell adhesion and migration. Multiple alternatively spliced transcript variants encoding different isoforms have been found. [provided by RefSeq; Aug 2011]
Usage	Research use only
Conjugate	Biotinylated



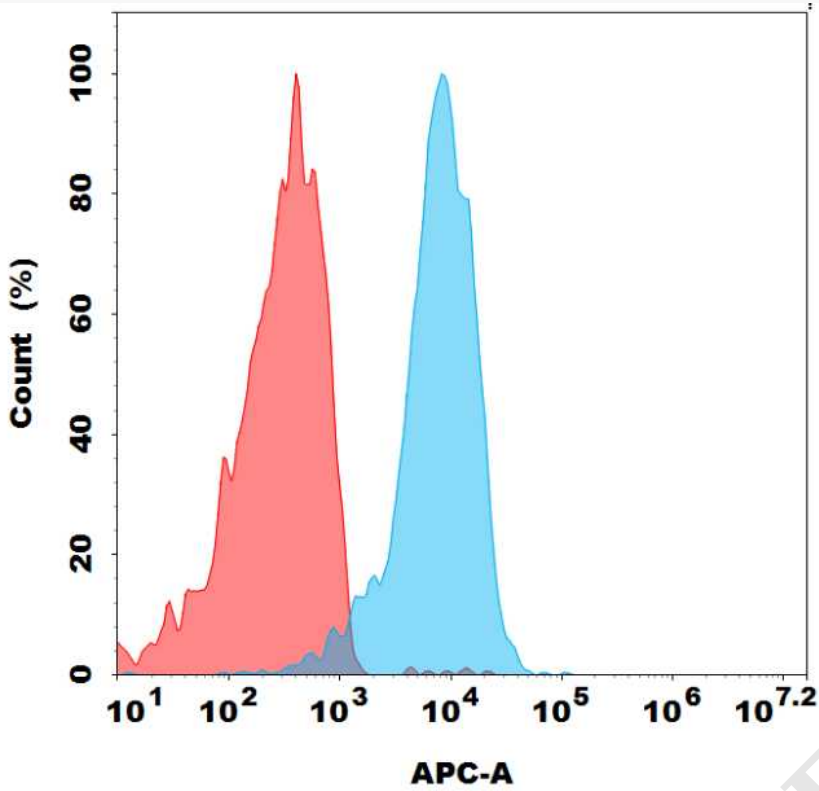


Figure 1. Flow cytometry analysis with 15 µg/ml Biotinylated Anti-CD166 antibody(DMC682) mAb on 293T cell (Blue histogram) or Isotype Biotinylated antibody on 293T cell

DIMABIO CONFIDENTIAL

