

## PRODUCT INFORMATION

<b>Target</b>	BTN3A2, CCR1, CD138, CD147, CD164, CD38, CXCR3, GPRC5D, KI67, LGALS1, SELPLG
<b>Description</b>	The embedded and sliced tumor sections (4µm section) from Balb/C nu mice implanted with MM.1S cells
<b>Host Cells</b>	MM.1S
<b>Applications</b>	IHC
<b>Host mice</b>	Balb/C nu
<b>Delivery</b>	1 week
<b>Guarantee</b>	36 months from the date of manufacture
<b>Background</b>	These carefully prepared tissue slides offer researchers standardized and high-quality samples for antibody testing. Utilizing tumor samples from immunocompromised mice, researchers can confidently assess antibody specificity and sensitivity, driving advancements in cancer diagnostics and therapeutics.
<b>Storage &amp; Shipping</b>	Room temperature
<b>Usage</b>	Research use only

**SLI100002**

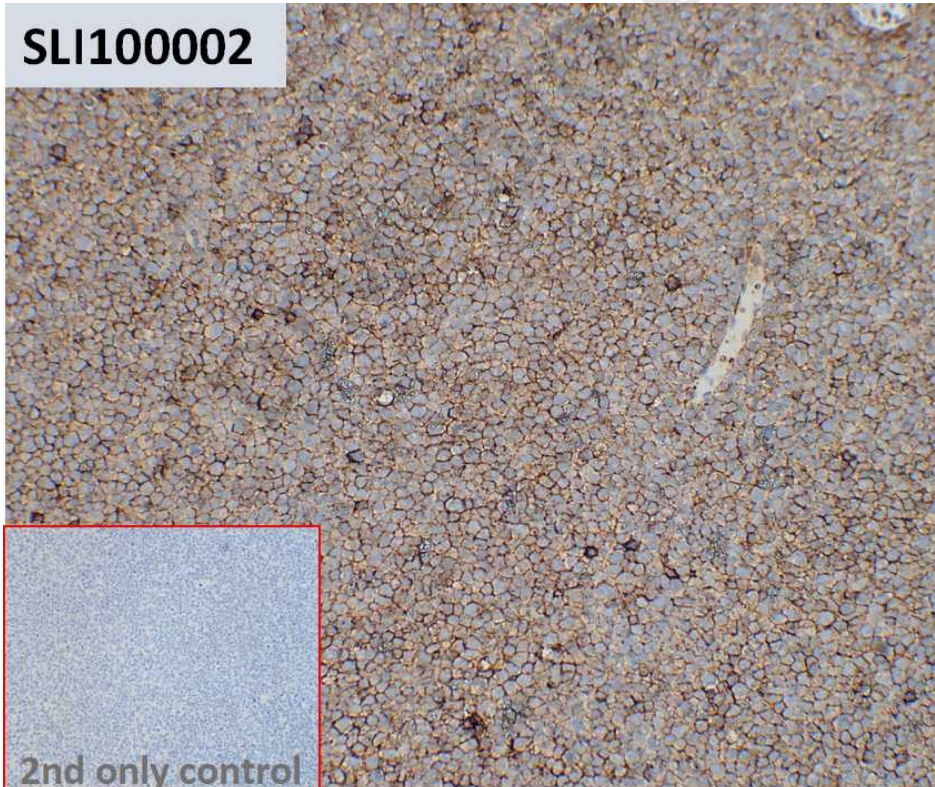


Figure 1. IHC analysis of Balb/C nu MM.1S DiSliceX™ SlideSet section (Cat. No. SLI100002) with Anti-SELPLG antibody (68H10), IgG1 Chimeric mAb (Cat. No. DMC100741) at a concentration of 10 µg/ml. The inset image shows the absence of staining in the secondary antibody-only control.



DIMABIO CONFIDENTIAL

