

## PRODUCT INFORMATION

<b>Target</b>	ADAM9, AFP, ALB, ANGPTL3, B7H3, CD112, CD24, CDH6, CLDN6, CLU, CXADR, GPC3, HER3, MSLN, PRLR, SCF
<b>Description</b>	The embedded and sliced tumor sections (4μm section) from Balb/C nu mice implanted with HuH7 cells
<b>Host Cells</b>	HuH7
<b>Applications</b>	IHC
<b>Host mice</b>	Balb/C nu
<b>Delivery</b>	1 week
<b>Guarantee</b>	36 months from the date of manufacture
<b>Background</b>	These carefully prepared tissue slides offer researchers standardized and high-quality samples for antibody testing. Utilizing tumor models derived from immunocompromised mice, researchers can confidently assess antibody specificity and sensitivity, driving advancements in cancer diagnostics and therapeutics.
<b>Storage &amp; Shipping</b>	Room temperature
<b>Usage</b>	Research use only

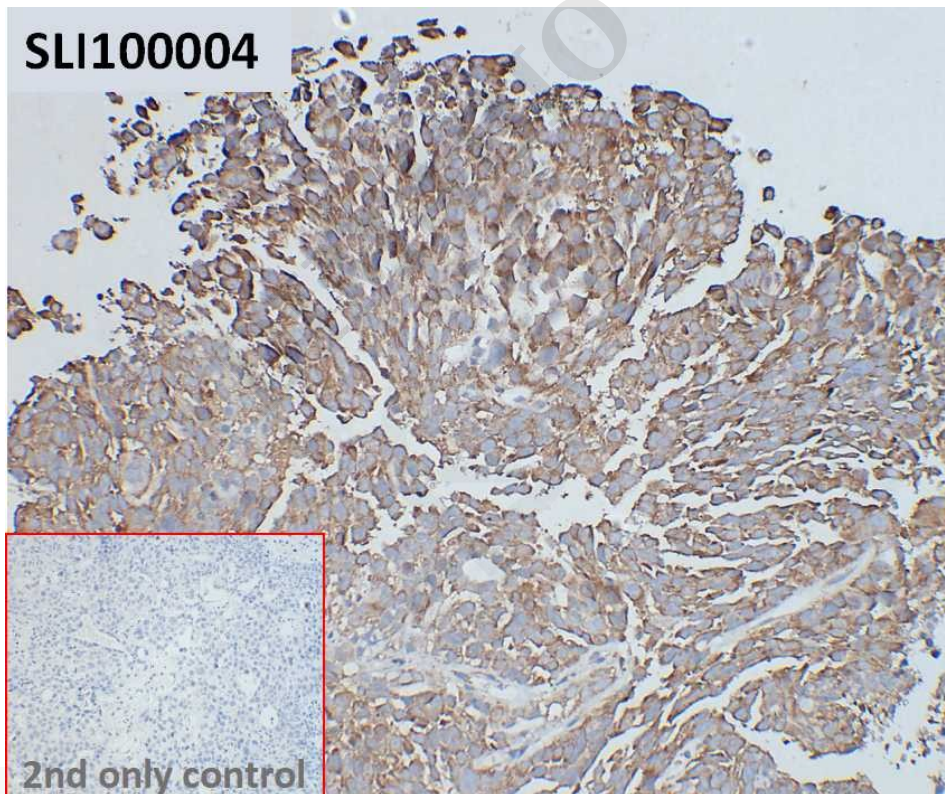


Figure 1. IHC analysis of Balb/C nu HuH7 DiSliceX™ SlideSet section (Cat. No. SLI100004) with Anti-ADAM9 antibody (45G10), IgG (Chimeric Mouse Anti-Hu) (Cat. No. DMC100832) at a concentration of 10 μg/ml. The inset image shows the absence of staining in the control tissue.

Biotechnology B7, Biolake No.666  
Gaoxin Road, Wuhan, Hubei, China  
Telephone: +1 2409940618(USA)  
/+86-18062749453(China)  
/+86-400-006-0995(China)

Website: [www.dimabio.com](http://www.dimabio.com)



secondary antibody-only control.

DIMABIO CONFIDENTIAL

