

PRODUCT INFORMATION

Clone ID	16A3
Target	TYRO3
Synonyms	BYK;Dtk;Etk-2;Rek;RSE;Sky;Tif
Host Species	Rabbit
Description	Anti-TYRO3 antibody(16A3), IgG1 Chimeric mAb
Delivery	In Stock
Uniprot ID	Q06418
IgG type	Rabbit/Human Fc chimeric IgG1
Clonality	Monoclonal
Reactivity	Human
Applications	Flow Cyt
Recommended Dilutions	Flow Cyt 1/100
Purification	Purified from cell culture supernatant by affinity chromatography
Formulation & Reconstitution	Lyophilized from sterile PBS, pH 7.4. Normally 5 % - 8% trehalose is added as protectants before lyophilization. Please see Certificate of Analysis for specific instructions of reconstitution.
Storage & Shipping	Store at -20°C to -80°C for 12 months in lyophilized form. After reconstitution, if not intended for use within a month, aliquot and store at -80°C (Avoid repeated freezing and thawing). Lyophilized proteins are shipped at ambient temperature.
Background	The gene is part of a 3-member transmembrane receptor kinase receptor family with a processed pseudogene distal on chromosome 15. The encoded protein is activated by the products of the growth arrest-specific gene 6 and protein S genes and is involved in controlling cell survival and proliferation, spermatogenesis, immunoregulation and phagocytosis. The encoded protein has also been identified as a cell entry factor for Ebola and Marburg viruses. [provided by RefSeq, May 2010]
Usage	Research use only
Conjugate	Unconjugated



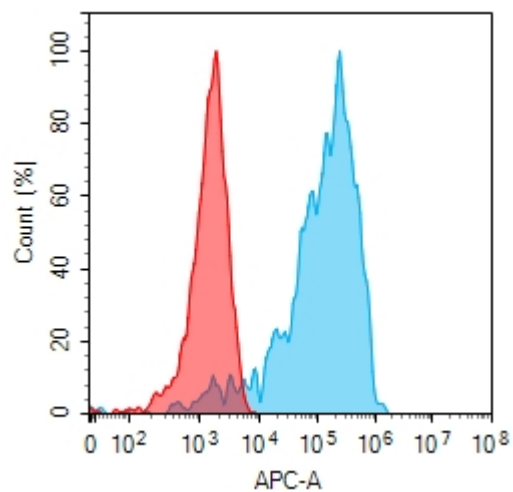


Figure 1. Flow cytometry analysis with 1 μ g/mL Anti-TYRO3 (16A3) mAb on Expi293 cells transfected with human TYRO3 (Blue histogram) or Expi293 transfected with irrelevant protein (Red histogram).

DIMABIO CONFIDENTIAL

