

PRODUCT INFORMATION

Clone ID	17A11
Target	Trop2
Synonyms	TACSTD2;GA733-1;M1S1;TROP2
Host Species	Rabbit
Description	Anti-TROP2 antibody(17A11), Rabbit mAb
Delivery	In Stock
Uniprot ID	P09758
IgG type	Rabbit IgG
Clonality	Monoclonal
Reactivity	Human
Applications	WB
Recommended Dilutions	WB 1:1000
Purification	Purified from cell culture supernatant by affinity chromatography
Formulation & Reconstitution	Lyophilized from sterile PBS, pH 7.4. Normally 5% - 8% trehalose is added as protectants before lyophilization. Please see Certificate of Analysis for specific instructions of reconstitution.
Storage & Shipping	Store at -20°C to -80°C for 12 months in lyophilized form. After reconstitution, if not intended for use within a month, aliquot and store at -80°C (Avoid repeated freezing and thawing). Lyophilized proteins are shipped at ambient temperature.
Background	This intronless gene encodes a carcinoma-associated antigen. This antigen is a cell surface receptor that transduces calcium signals. Mutations of this gene have been associated with gelatinous drop-like corneal dystrophy.
Usage	Research use only
Conjugate	Unconjugated



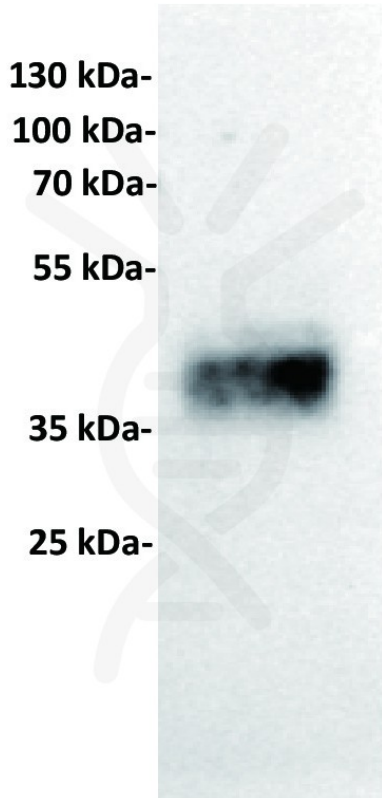


Figure 1. Anti-Trop2 antibody (SKU# DME101001) at 1/1000 dilution

Lane : A431, whole cell lysate

Secondary : Goat Anti-Rabbit IgG H&L (HRP) at 1/5000 dilution

Predicted band size: 36 kDa

Observed band size: 40 kDa

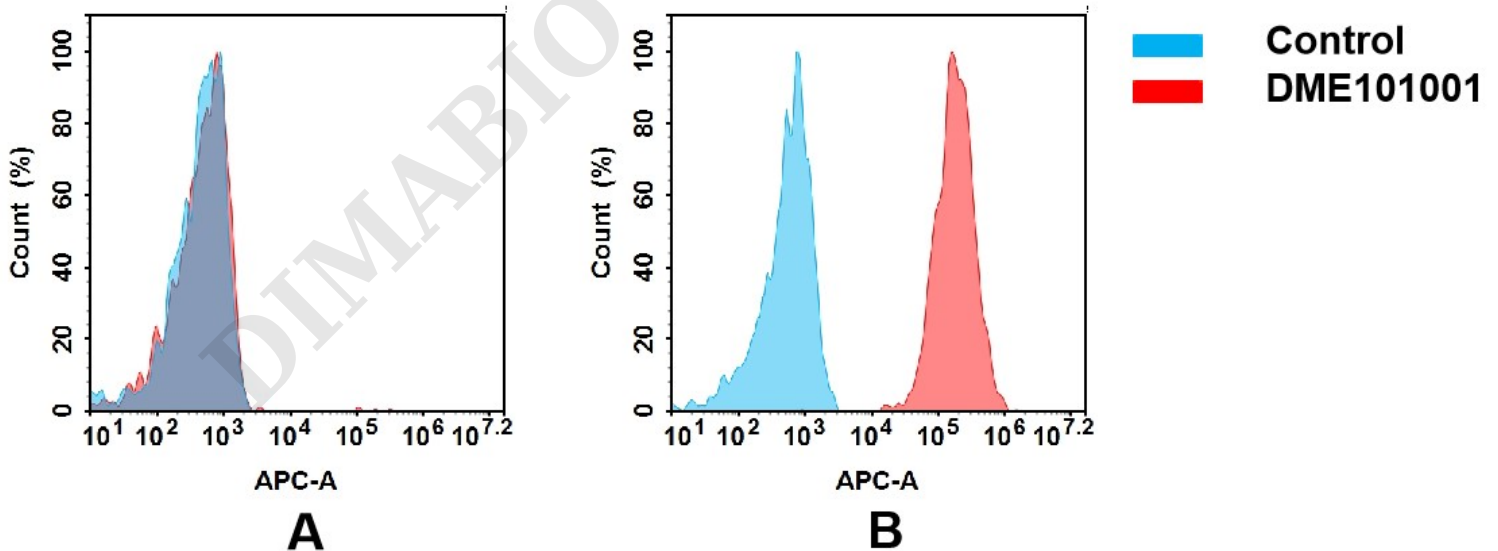


Figure 2. Flow cytometry analysis of antigen binding of rabbit anti-human TROP2 mAb(DME101001).

(A) DME101001 does not bind to CHO-S cells that do not express TROP2.

(B) A clear peak shift of DME101001 was seen compared to the control when incubated with TROP2-expressing A431 cells, indicating strong binding of DME101001 to TROP2. Antibodies were incubated at 5 μ g/mL.

