

**PRODUCT INFORMATION**

<b>Clone ID</b>	DM76
<b>Target</b>	Trop2
<b>Synonyms</b>	TACSTD2; GA733-1; M1S1; TROP2
<b>Host Species</b>	Rabbit
<b>Description</b>	Anti-Trop2 antibody(DM76); Rabbit mAb
<b>Delivery</b>	In Stock
<b>Uniprot ID</b>	P09758
<b>IgG type</b>	Rabbit IgG
<b>Clonality</b>	Monoclonal
<b>Reactivity</b>	Human
<b>Applications</b>	ELISA; Flow Cyt
<b>Recommended Dilutions</b>	ELISA 1:5000-10000; Flow Cyt 1:100
<b>Purification</b>	Purified from cell culture supernatant by affinity chromatography
<b>Formulation &amp; Reconstitution</b>	Lyophilized from sterile PBS, pH 7.4. Normally 5% - 8% trehalose is added as protectants before lyophilization. Please see Certificate of Analysis for specific instructions of reconstitution.
<b>Storage &amp; Shipping</b>	Store at -20°C to -80°C for 12 months in lyophilized form. After reconstitution, if not intended for use within a month, aliquot and store at -80°C (Avoid repeated freezing and thawing). Lyophilized proteins are shipped at ambient temperature.
<b>Background</b>	This intronless gene encodes a carcinoma-associated antigen. This antigen is a cell surface receptor that transduces calcium signals. Mutations of this gene have been associated with gelatinous drop-like corneal dystrophy.
<b>Usage</b>	Research use only
<b>Conjugate</b>	Unconjugated



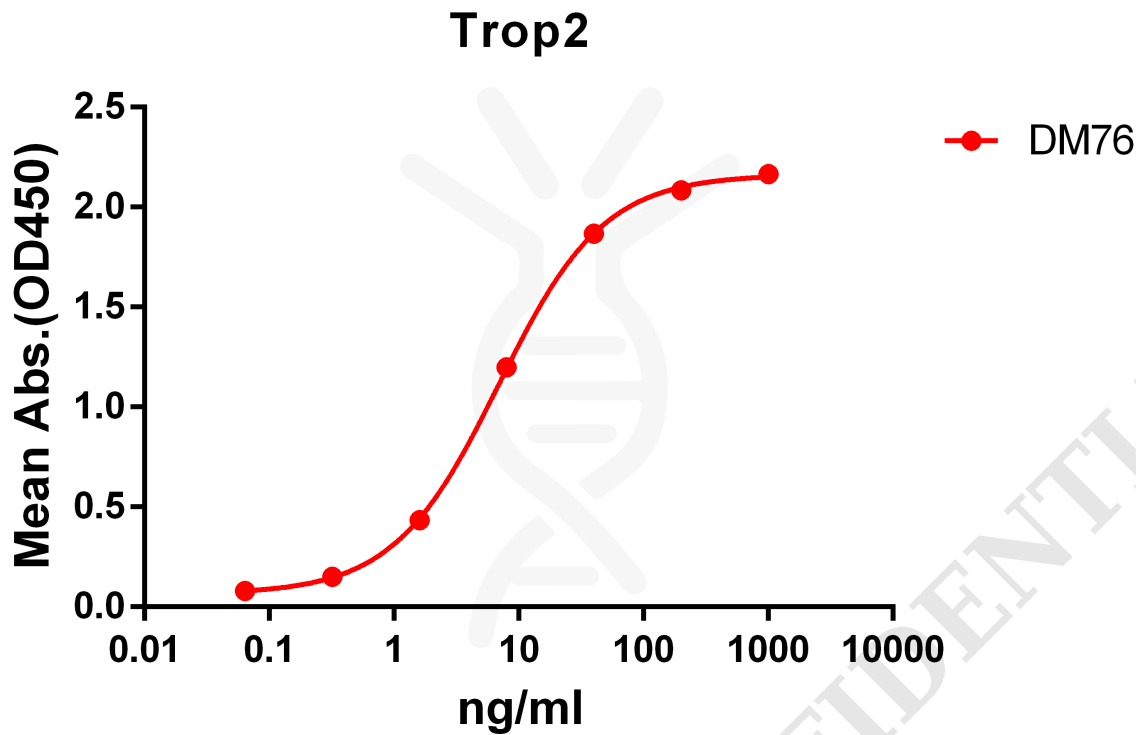


Figure 1. ELISA plate pre-coated by 2  $\mu\text{g/ml}$  (100  $\mu\text{l/well}$ ) Human Trop2 protein, mFc-His tagged protein PME100501 can bind Rabbit anti-Trop2 monoclonal antibody (clone: DM76) in a linear range of 1-100 ng/ml.

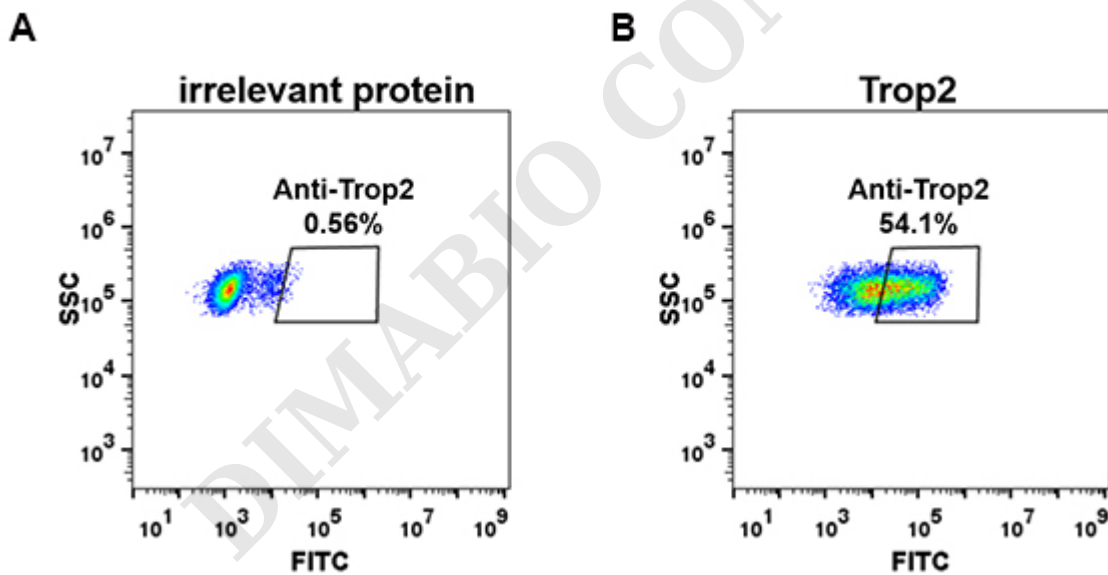


Figure 2. Expi 293 cell line transfected with irrelevant protein (A) and human Trop2 (B) were surface stained with Rabbit anti-Trop2 monoclonal antibody 1 $\mu\text{g/ml}$  (clone: DM76) followed by Alexa 488-conjugated anti-rabbit IgG secondary antibody.



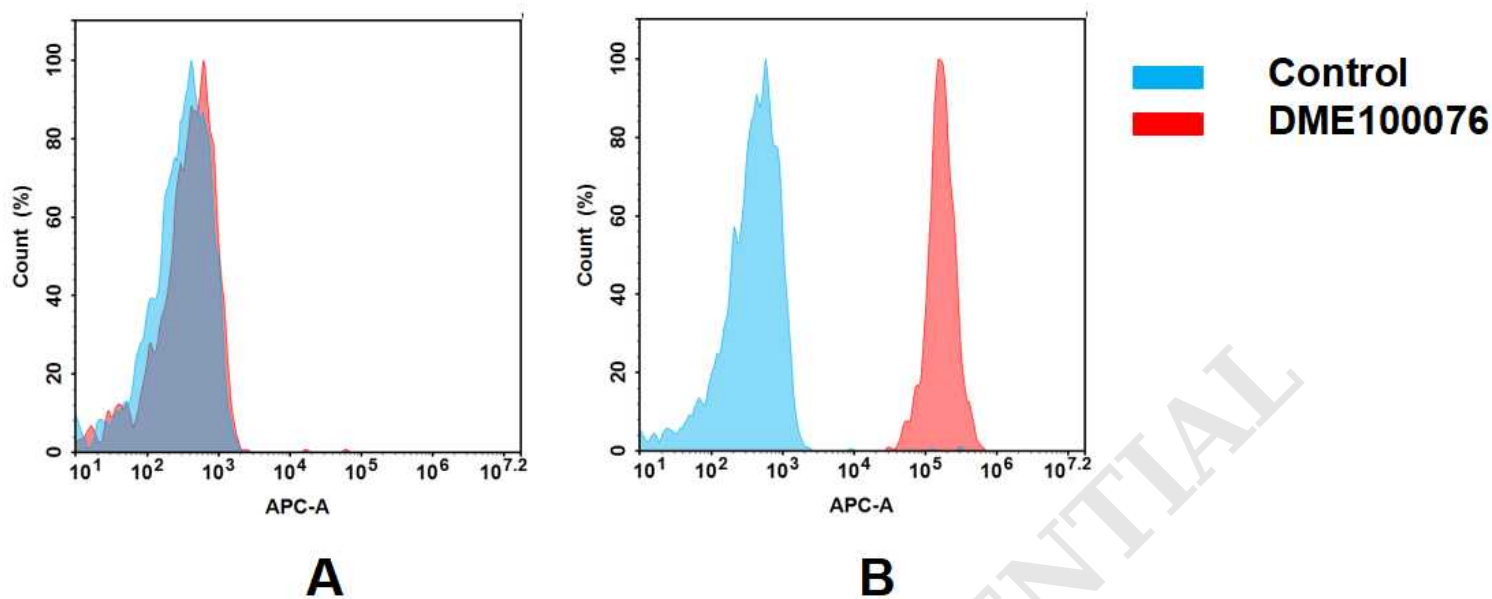


Figure 3. Flow cytometry analysis of antigen binding of rabbit anti-human Trop2 mAb(DME100076).

(A) DME100076 does not bind to 293T cells that do not express Trop2.

(B) A clear peak shift of DME100076 was seen compared to the control when incubated with Trop2-expressing A431 cells, indicating strong binding of DME100076 to Trop2. Antibodies were incubated at 2  $\mu$ g/mL.

DIMABIO CONFIDENTIAL

