

PRODUCT INFORMATION

Clone ID	DM83
Target	TIM3
Synonyms	HAVCR2; TIM3; TIMD3; FLJ14428; KIM3
Host Species	Rabbit
Description	Anti-TIM3 antibody(DM83); Rabbit mAb
Delivery	In Stock
Uniprot ID	Q8TDQ0
IgG type	Rabbit IgG
Clonality	Monoclonal
Reactivity	Human
Applications	ELISA; Flow Cyt
Recommended Dilutions	ELISA 1:5000-10000; Flow Cyt 1:100
Purification	Purified from cell culture supernatant by affinity chromatography
Formulation & Reconstitution	Lyophilized from sterile PBS, pH 7.4. Normally 5 % - 8% trehalose is added as protectants before lyophilization. Please see Certificate of Analysis for specific instructions of reconstitution.
Storage & Shipping	Store at -20°C to -80°C for 12 months in lyophilized form. After reconstitution, if not intended for use within a month, aliquot and store at -80°C (Avoid repeated freezing and thawing). Lyophilized proteins are shipped at ambient temperature.
Background	The protein encoded by this gene belongs to the immunoglobulin superfamily; and TIM family of proteins. CD4-positive T helper lymphocytes can be divided into types 1 (Th1) and 2 (Th2) on the basis of their cytokine secretion patterns. Th1 cells are involved in cell-mediated immunity to intracellular pathogens and delayed-type hypersensitivity reactions; whereas; Th2 cells are involved in the control of extracellular helminthic infections and the promotion of atopic and allergic diseases. This protein is a Th1-specific cell surface protein that regulates macrophage activation; and inhibits Th1-mediated auto- and alloimmune responses; and promotes immunological tolerance.
Usage	Research use only
Conjugate	Unconjugated



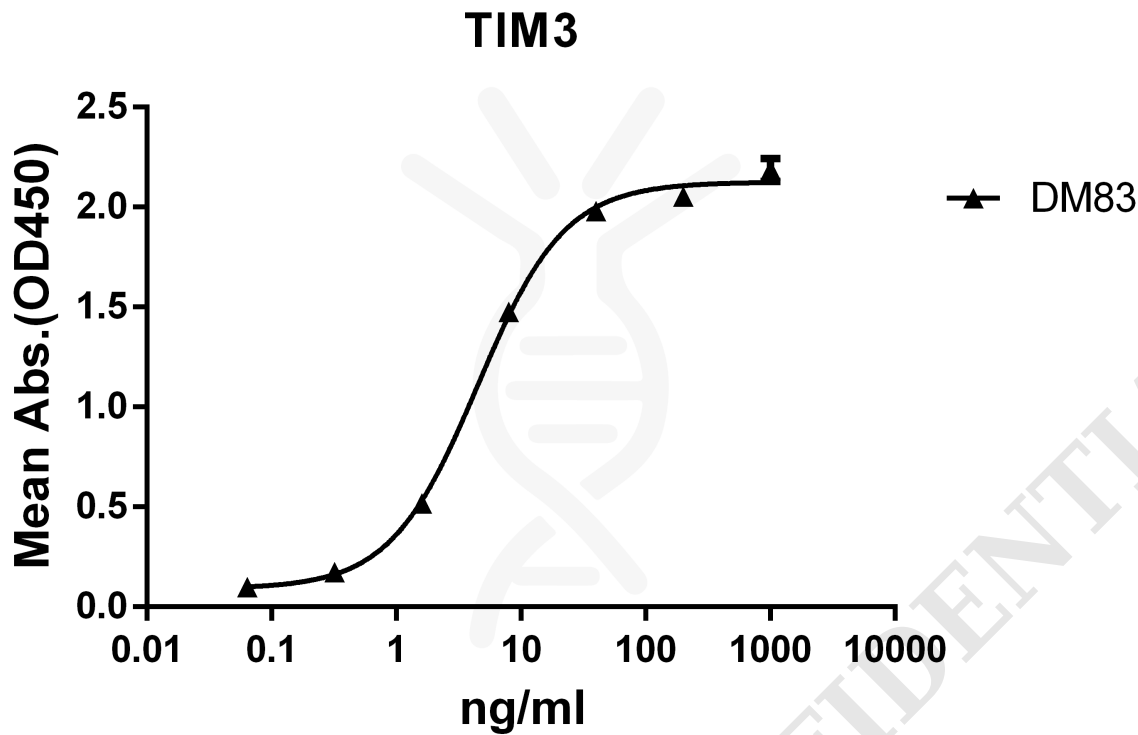


Figure 1. ELISA plate pre-coated by 2 $\mu\text{g/ml}$ (100 $\mu\text{l/well}$) Human TIM3 protein, mFc-His tagged protein PME100030 can bind Rabbit anti-TIM3 monoclonal antibody (clone: DM83) in a linear range of 0.32-40 ng/ml.

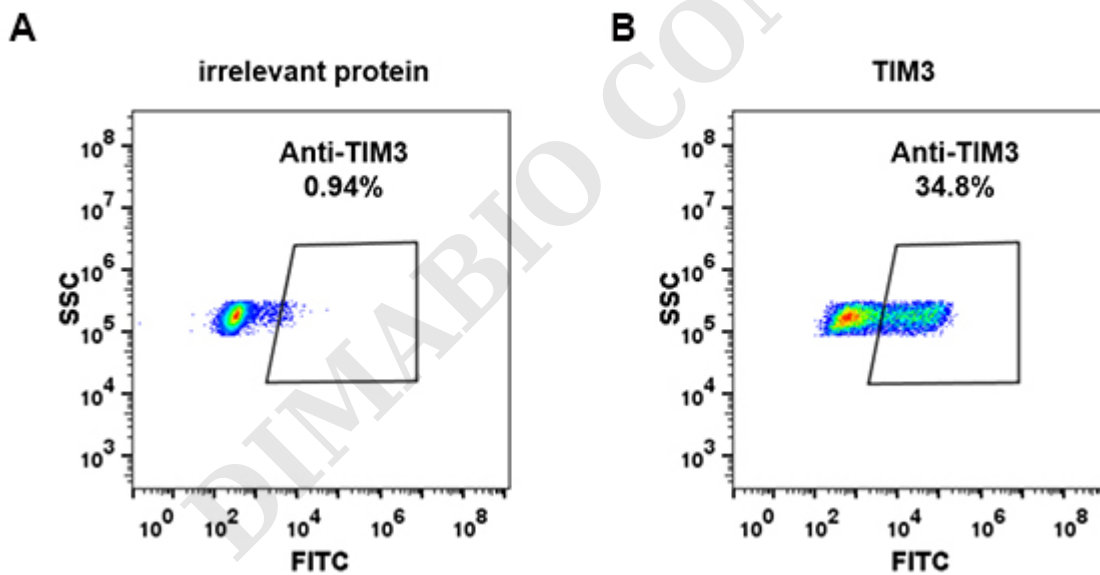


Figure 2. Expi 293 cell line transfected with irrelevant protein (A) and human TIM3 (B) were surface stained with Rabbit anti-TIM3 monoclonal antibody 1 $\mu\text{g/ml}$ (clone: DM83) followed by Alexa 488-conjugated anti-rabbit IgG secondary antibody.



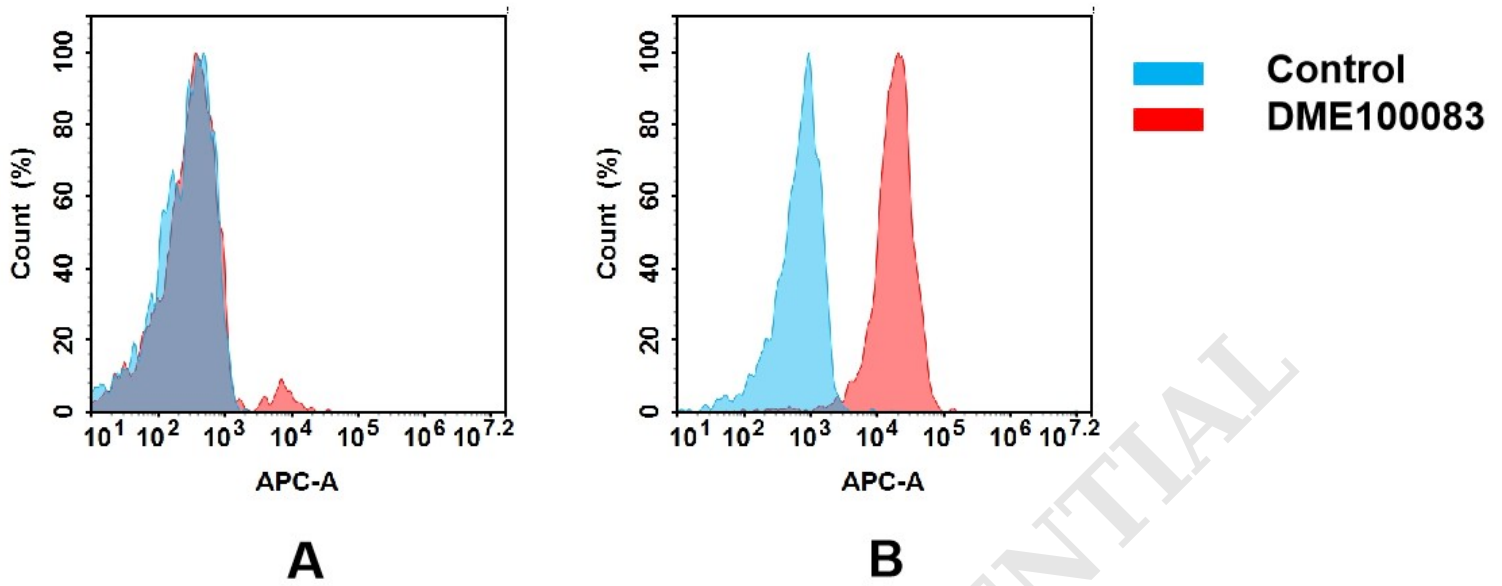


Figure 3. Flow cytometry analysis of antigen binding of rabbit anti-human TIM3 mAb(DME100083).

(A) DME100083 does not bind to 293T cells that do not express TIM3.

(B) A clear peak shift of DME100083 was seen compared to the control when incubated with TIM3-expressing 8226 cells, indicating strong binding of DME100083 to TIM3. Antibodies were incubated at 10 µg/mL.

DIMABIO CONFIDENTIAL

