

PRODUCT INFORMATION

Clone ID	DMC286
Target	SLAMF5
Synonyms	CD84;SLAMF5;LY9B;SLAMF5
Host Species	Rabbit
Description	Anti-SLAMF5 antibody(DMC286); IgG1 Chimeric mAb
Delivery	In Stock
Uniprot ID	Q9UIB8
IgG type	Rabbit/Human Fc chimeric IgG1
Clonality	Monoclonal
Reactivity	Human
Applications	Flow Cyt
Recommended Dilutions	Flow Cyt 1:100
Purification	Purified from cell culture supernatant by affinity chromatography
Formulation & Reconstitution	Lyophilized from sterile PBS, pH 7.4. Normally 5 % - 8% trehalose is added as protectants before lyophilization. Please see Certificate of Analysis for specific instructions of reconstitution.
Storage & Shipping	Store at -20°C to -80°C for 12 months in lyophilized form. After reconstitution, if not intended for use within a month, aliquot and store at -80°C (Avoid repeated freezing and thawing). Lyophilized proteins are shipped at ambient temperature.
Background	This gene encodes a membrane glycoprotein that is a member of the signaling lymphocyte activation molecule (SLAM) family. This family forms a subset of the larger CD2 cell-surface receptor Ig superfamily. The encoded protein is a homophilic adhesion molecule that is expressed in numerous immune cells types and is involved in regulating receptor-mediated signaling in those cells. Alternate splicing results in multiple transcript variants.
Usage	Research use only



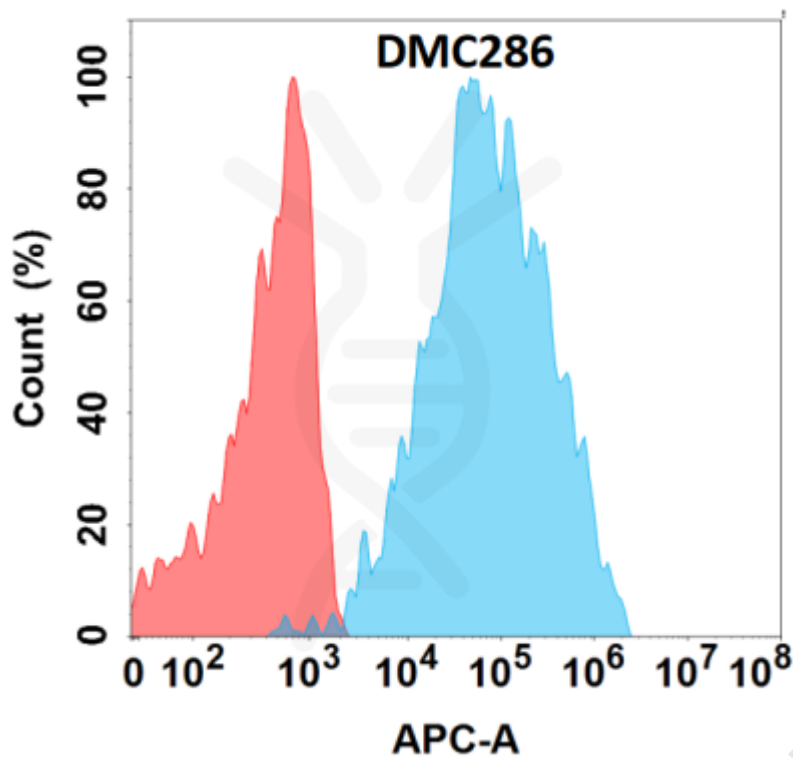


Figure 1. Flow cytometry analysis with Anti-SLAMF5 (DMC286) on Expi293 cells transfected with human SLAMF5 (Blue histogram) or Expi293 transfected with irrelevant protein (Red histogram).

DIMABIO CONFIDENTIAL

