

PRODUCT INFORMATION

Clone ID	31A10
Target	SEZ6
Synonyms	BSRPC
Host Species	Rabbit
Description	Anti-SEZ6 antibody(31A10), IgG1 Chimeric mAb
Delivery	In Stock
Uniprot ID	Q53EL9
IgG type	Rabbit/Human Fc chimeric IgG1
Clonality	Monoclonal
Reactivity	Human
Applications	Flow Cyt
Recommended Dilutions	Flow Cyt 1/100
Purification	Purified from cell culture supernatant by affinity chromatography
Formulation & Reconstitution	Lyophilized from sterile PBS, pH 7.4. Normally 5% - 8% trehalose is added as protectants before lyophilization. Please see Certificate of Analysis for specific instructions of reconstitution.
Storage & Shipping	Store at -20°C to -80°C for 12 months in lyophilized form. After reconstitution, if not intended for use within a month, aliquot and store at -80°C (Avoid repeated freezing and thawing). Lyophilized proteins are shipped at ambient temperature.
Background	The protein encoded by this gene is thought to contain five cysteine-rich motifs that are similar to sushi domains, as well as two domains similar to the amino terminal half of the CUB (for complement C1r/C1s, Uegf, Bmp1) domain. Mutations in this gene have been associated with febrile seizures. [provided by RefSeq, Jul 2016]
Usage	Research use only
Conjugate	Unconjugated



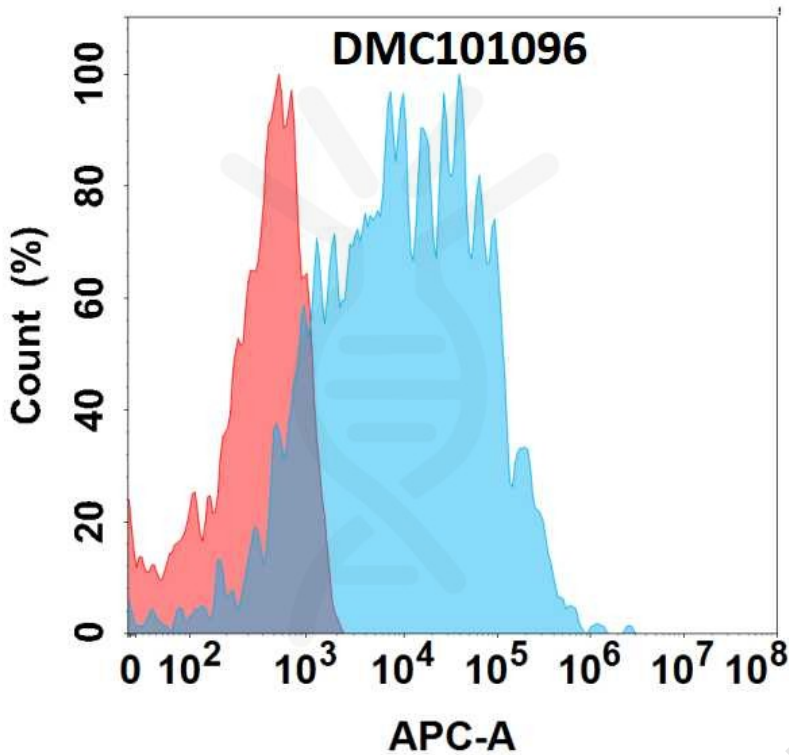


Figure 1. Flow cytometry analysis with 1 μ g/mL Anti-SEZ6 (31A10) mAb on Expi293 cells transfected with human SEZ6 (Blue histogram) or Expi293 transfected with irrelevant protein (Red histogram).

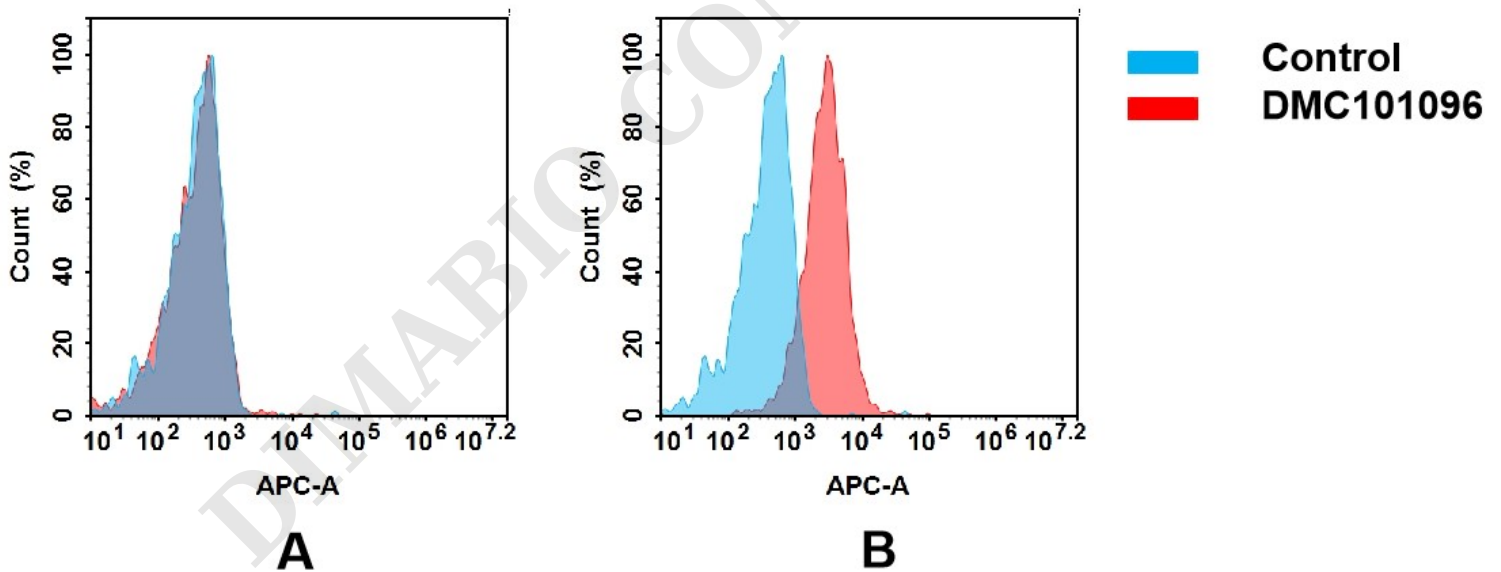


Figure 2. Flow cytometry analysis of antigen binding of anti-human SEZ6 mAb(DMC101096).

(A) DMC101096 does not bind to CHO-S cells that do not express SEZ6.

(B) A clear peak shift of DMC101096 was seen compared to the control when incubated with SEZ6-expressing TT cells, indicating strong binding of DMC101096 to SEZ6. Antibodies were incubated at 5 μ g/mL.

