

PRODUCT INFORMATION

Common Name	SEG101, SelG1, crizanlizumab-tmca
Synonyms	P-Selectin;CD62P;SELP;GMP-140
Applications	Flow Cyt
Recommended Dilutions	Flow Cyt 1:100
Formulation & Reconstitution	Lyophilized from sterile PBS, pH 7.4. Normally 5% - 8% trehalose is added as protectants before lyophilization. Please see Certificate of Analysis for specific instructions of reconstitution.
Host Species	Humanized
IgG type	IgG2
Reactivity	Human
Target	SELP
Uniprot ID	P16109
Description	Anti-SELP(crizanlizumab biosimilar) mAb
Delivery	In Stock
Storage & Shipping	Store at -20°C to -80°C for 12 months in lyophilized form. After reconstitution, if not intended for use within a month, aliquot and store at -80°C (Avoid repeated freezing and thawing). Lyophilized proteins are shipped at ambient temperature.
Background	Research grade biosimilar. Not for use in therapeutic or diagnostic procedures for humans or animals.
Usage	Research use only
Conjugate	Unconjugated

CONFIDENTIAL



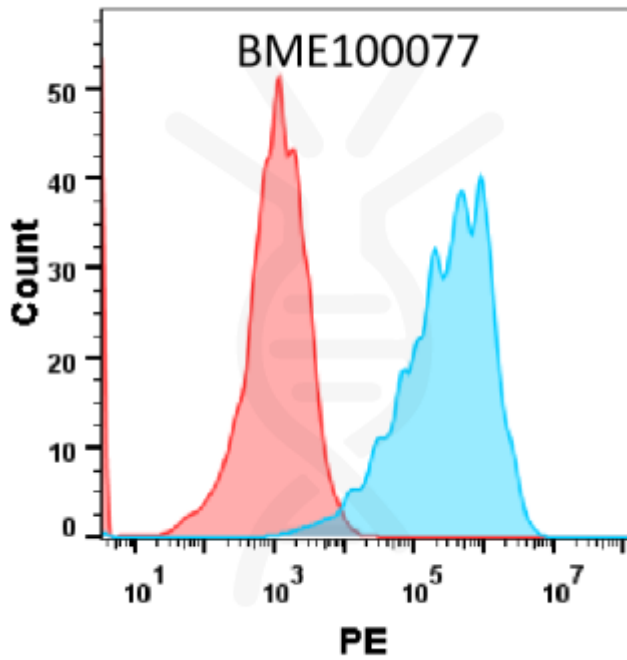


Figure 1. HEK293 cell line transfected with irrelevant protein (red histogram) and human SELP protein (blue histogram) were surface stained with Anti-SELP(crizanlizumab biosimilar) mAb 1 μ g/ml followed by PE-conjugated Goat anti-Human IgG secondary antibody.

DIMABIO CONFIDENTIAL

