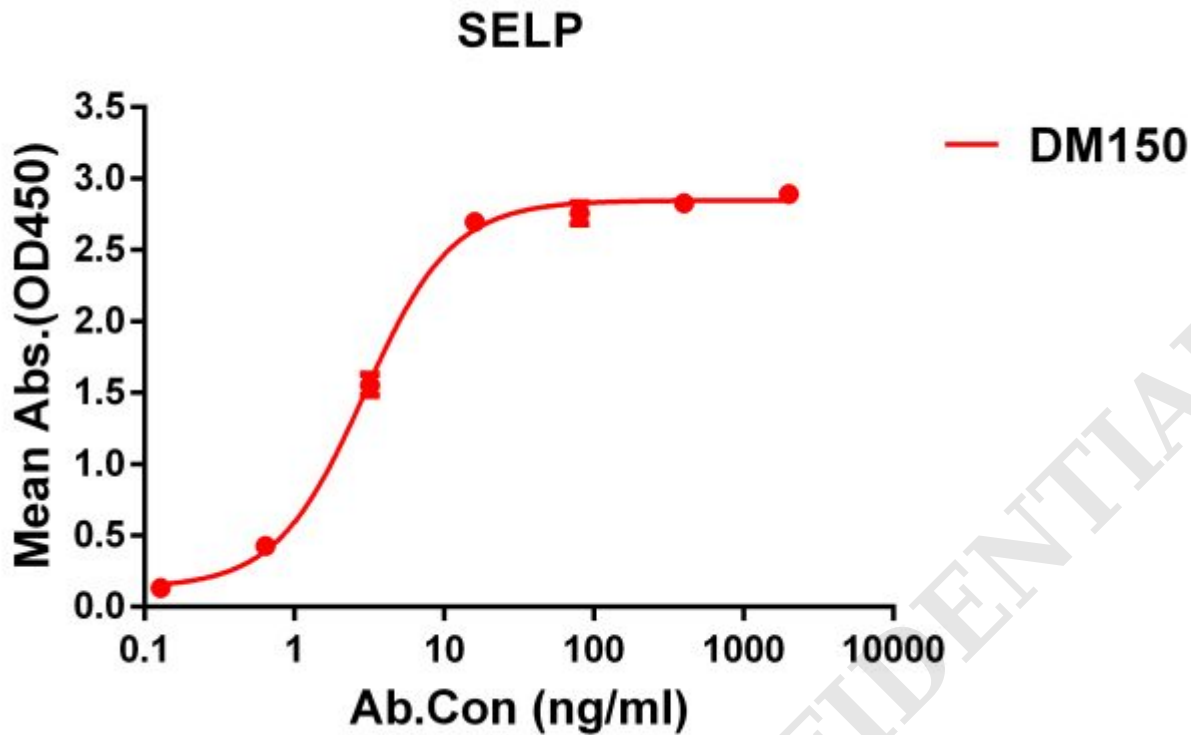


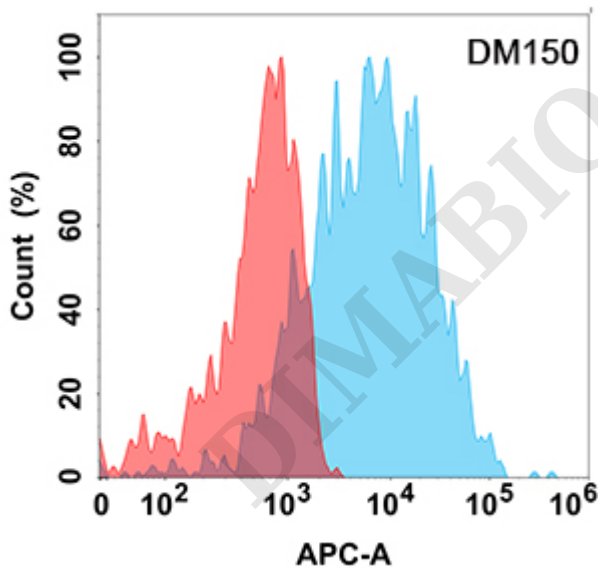
**PRODUCT INFORMATION**

<b>Clone ID</b>	DM150
<b>Target</b>	SELP
<b>Synonyms</b>	P-Selectin;CD62P;SELP;GMP-140
<b>Host Species</b>	Rabbit
<b>Description</b>	Anti-SELP antibody(DM150); Rabbit mAb
<b>Delivery</b>	In Stock
<b>Uniprot ID</b>	P16109
<b>IgG type</b>	Rabbit IgG
<b>Clonality</b>	Monoclonal
<b>Reactivity</b>	Human
<b>Applications</b>	ELISA; Flow Cyt
<b>Recommended Dilutions</b>	ELISA 1:5000-10000; Flow Cyt 1:100
<b>Purification</b>	Purified from cell culture supernatant by affinity chromatography
<b>Formulation &amp; Reconstitution</b>	Lyophilized from sterile PBS, pH 7.4. Normally 5 % - 8% trehalose is added as protectants before lyophilization. Please see Certificate of Analysis for specific instructions of reconstitution.
<b>Storage &amp; Shipping</b>	Store at -20°C to -80°C for 12 months in lyophilized form. After reconstitution, if not intended for use within a month, aliquot and store at -80°C (Avoid repeated freezing and thawing). Lyophilized proteins are shipped at ambient temperature.
<b>Background</b>	This gene encodes a 140 kDa protein that is stored in the alpha-granules of platelets and Weibel-Palade bodies of endothelial cells. This protein redistributes to the plasma membrane during platelet activation and degranulation and mediates the interaction of activated endothelial cells or platelets with leukocytes. The membrane protein is a calcium-dependent receptor that binds to sialylated forms of Lewis blood group carbohydrate antigens on neutrophils and monocytes. Alternative splice variants may occur but are not well documented.
<b>Usage</b>	Research use only
<b>Conjugate</b>	Unconjugated
<b>DIMA Disclaimer</b>	All DIMA recombinant antibodies are genuinely generated by DIMA Biotech. They are all under patent application. Any protein sequencing or reverse engineering attempt is prohibited. We are actively scrutinizing all patent application to ensure no IP infringement.





**Figure 1.** ELISA plate pre-coated by 1  $\mu$ g/ml (100  $\mu$ l/well) Human SELP protein, hFc tagged protein ([getskuurl sku="PME100087"]) can bind Rabbit anti-SELP monoclonal antibody(**clone: DM150**) in a linear range of 1-10 ng/ml.



**Figure 2.** Flow cytometry analysis with Anti-SELP (DM150) on Expi293 cells transfected with human SELP (Blue histogram) or Expi293 transfected with irrelevant protein (Red histogram).

