

PRODUCT INFORMATION

Uniprot ID	Q13308
Common Name	PF-06523435,hu24
Synonyms	CCK4
Applications	ELISA, Flow Cyt
Recommended Dilutions	ELISA 1:5000-10000, Flow Cyt 1:100
Formulation & Reconstitution	Lyophilized from sterile PBS, pH 7.4. Normally 5% - 8% trehalose is added as protectants before lyophilization. Please see Certificate of Analysis for specific instructions of reconstitution.
Host Species	Humanized
IgG type	IgG1(E239D, M241L)
Reactivity	Human
Target	PTK7
Description	Anti-PTK7(cofetuzumab biosimilar) mAb
Delivery	In Stock
Storage & Shipping	Store at -20°C to -80°C for 12 months in lyophilized form. After reconstitution, if not intended for use within a month, aliquot and store at -80°C (Avoid repeated freezing and thawing). Lyophilized antibodies are shipped at ambient temperature.
Background	Research grade biosimilar. Not for use in therapeutic or diagnostic procedures for humans or animals.
Usage	Research use only



Anti-PTK7(cofetuzumab biosimilar) mAb ELISA

0.2 μg of Human PTK7, hFc tagged protein per well

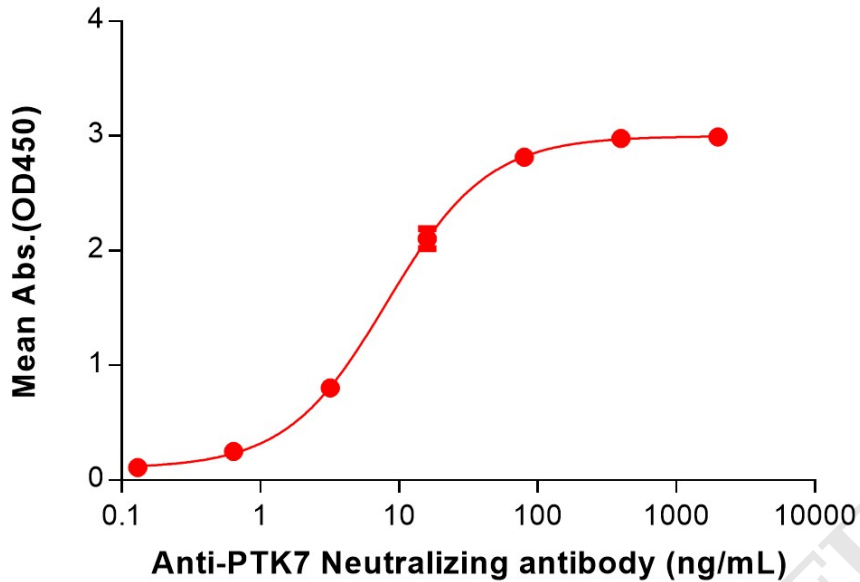


Figure 1. ELISA plate pre-coated by 2 $\mu\text{g}/\text{mL}$ (100 $\mu\text{L}/\text{well}$) Human PTK7 Protein, hFc Tag (PME100086) can bind Anti-PTK7(cofetuzumab biosimilar) mAb (BME100236) in a linear range of 0.64–80 ng/mL. In order to specifically detect BME100236, mouse anti-human Fab-specific antibody was used as detection antibody.

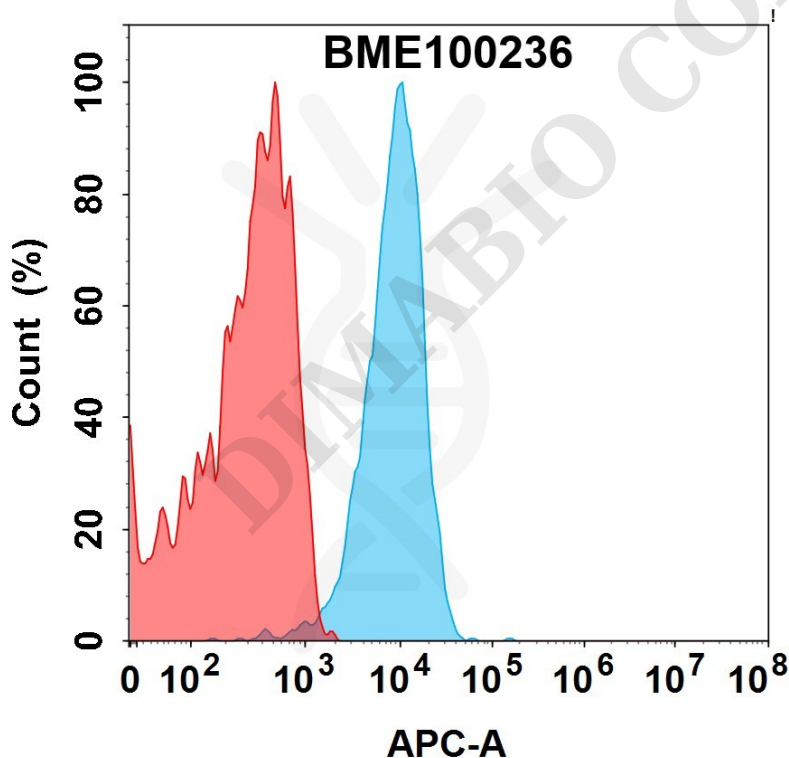


Figure 2. PTK7 protein is expressed on the surface of Expi293 cell membrane. Flow cytometry analysis with 1 $\mu\text{g}/\text{mL}$ Anti-PTK7(cofetuzumab biosimilar) mAb (BME100236) (Blue histogram) or isotype control mAb (Red histogram) on Expi293 cells.

