

PRODUCT INFORMATION

Common Name	KPL-716
Synonyms	IL-31 receptor subunit beta;IL-31R subunit beta;IL-31R-beta;IL-31RB
Applications	Flow Cyt
Recommended Dilutions	Flow Cyt 1:100
Formulation & Reconstitution	Lyophilized from sterile PBS, pH 7.4. Normally 5% - 8% trehalose is added as protectants before lyophilization. Please see Certificate of Analysis for specific instructions of reconstitution.
Host Species	Homo sapiens
IgG type	IgG4-lambda2
Reactivity	Human
Target	OSMR
Uniprot ID	Q99650
Description	Anti-OSMR(vixarelimab biosimilar) mAb
Delivery	In Stock
Storage & Shipping	Store at -20°C to -80°C for 12 months in lyophilized form. After reconstitution, if not intended for use within a month, aliquot and store at -80°C (Avoid repeated freezing and thawing). Lyophilized proteins are shipped at ambient temperature.
Background	Research grade biosimilar. Not for use in therapeutic or diagnostic procedures for humans or animals.
Usage	Research use only

DIMA BIO CONFIDENTIAL



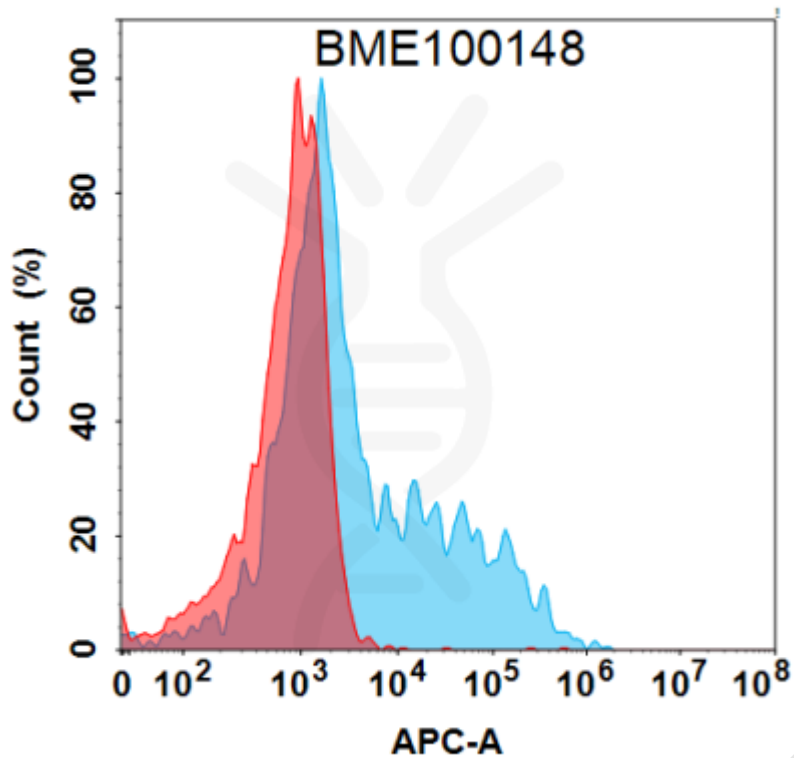


Figure 1. Flow cytometry analysis with 15 µg/mL Anti-OSMR (vixarelimab biosimilar) mAb (BME100148) on Expi293 cells transfected with Human OSMR protein (Blue histogram) or Expi293 transfected with irrelevant protein (Red histogram).

DIMABIO CONFIDENTIAL

