

PRODUCT INFORMATION

| | |
|---|--|
| Clone ID | DM209 |
| Target | NGR1 |
| Synonyms | ARIA; GGF; GGF2; HGL; HRG; HRG1; HRGA; MST131; MSTP131; NDF; NRG1-IT2; SMDF |
| Host Species | Rabbit |
| Description | Anti-NGR1 antibody(DM209); Rabbit mAb |
| Delivery | In Stock |
| Uniprot ID | Q02297 |
| IgG type | Rabbit IgG |
| Clonality | Monoclonal |
| Reactivity | Human |
| Applications | ELISA; Flow Cyt |
| Recommended Dilutions | ELISA 1:5000-10000; Flow Cyt 1:100 |
| Purification | Purified from cell culture supernatant by affinity chromatography |
| Formulation & Reconstitution | Lyophilized from sterile PBS, pH 7.4. Normally 5 % - 8% trehalose is added as protectants before lyophilization. Please see Certificate of Analysis for specific instructions of reconstitution. |
| Storage & Shipping | Store at -20°C to -80°C for 12 months in lyophilized form. After reconstitution, if not intended for use within a month, aliquot and store at -80°C (Avoid repeated freezing and thawing). Lyophilized proteins are shipped at ambient temperature. |
| Background | The protein encoded by this gene is a membrane glycoprotein that mediates cell-cell signaling and plays a critical role in the growth and development of multiple organ systems. An extraordinary variety of different isoforms are produced from this gene through alternative promoter usage and splicing. These isoforms are expressed in a tissue-specific manner and differ significantly in their structure; and are classified as types I; II; III; IV; V and VI. Dysregulation of this gene has been linked to diseases such as cancer; schizophrenia; and bipolar disorder (BPD). |
| Usage | Research use only |
| Conjugate | Unconjugated |
| DIMA Disclaimer | All DIMA recombinant antibodies are genuinely generated by DIMA Biotech. They are all under patent application. Any protein sequencing or reverse engineering attempt is prohibited. We are actively scrutinizing all patent application to ensure no IP infringement. |



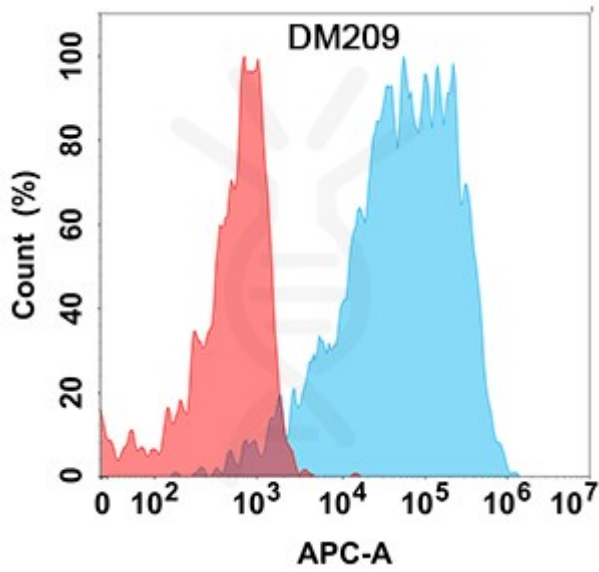


Figure 1. Flow cytometry analysis with Anti-NRG1 (DM209) on Expi293 cells transfected with human NRG1 (Blue histogram) or Expi293 transfected with irrelevant protein (Red histogram).

