

PRODUCT INFORMATION

| | |
|---|---|
| Clone ID | DM88 |
| Target | NKp30 |
| Synonyms | NCR3;CD337;NKp30;1C7;LY117;MALS |
| Host Species | Rabbit |
| Description | Anti-NKp30 antibody(DM88); Rabbit mAb |
| Delivery | In Stock |
| Uniprot ID | O14931 |
| IgG type | Rabbit IgG |
| Clonality | Monoclonal |
| Reactivity | Human |
| Applications | ELISA; Flow Cyt |
| Recommended Dilutions | ELISA 1:5000-10000; Flow Cyt 1:100 |
| Purification | Purified from cell culture supernatant by affinity chromatography |
| Formulation & Reconstitution | Lyophilized from sterile PBS, pH 7.4. Normally 5% - 8% trehalose is added as protectants before lyophilization. Please see Certificate of Analysis for specific instructions of reconstitution. |
| Storage & Shipping | Store at -20°C to -80°C for 12 months in lyophilized form. After reconstitution, if not intended for use within a month, aliquot and store at -80°C (Avoid repeated freezing and thawing). Lyophilized proteins are shipped at ambient temperature. |
| Background | The protein encoded by this gene is a natural cytotoxicity receptor (NCR) that may aid NK cells in the lysis of tumor cells. The encoded protein interacts with CD3-zeta (CD247); a T-cell receptor. A single nucleotide polymorphism in the 5' untranslated region of this gene has been associated with mild malaria susceptibility. Three transcript variants encoding different isoforms have been found for this gene. |
| Usage | Research use only |
| Conjugate | Unconjugated |



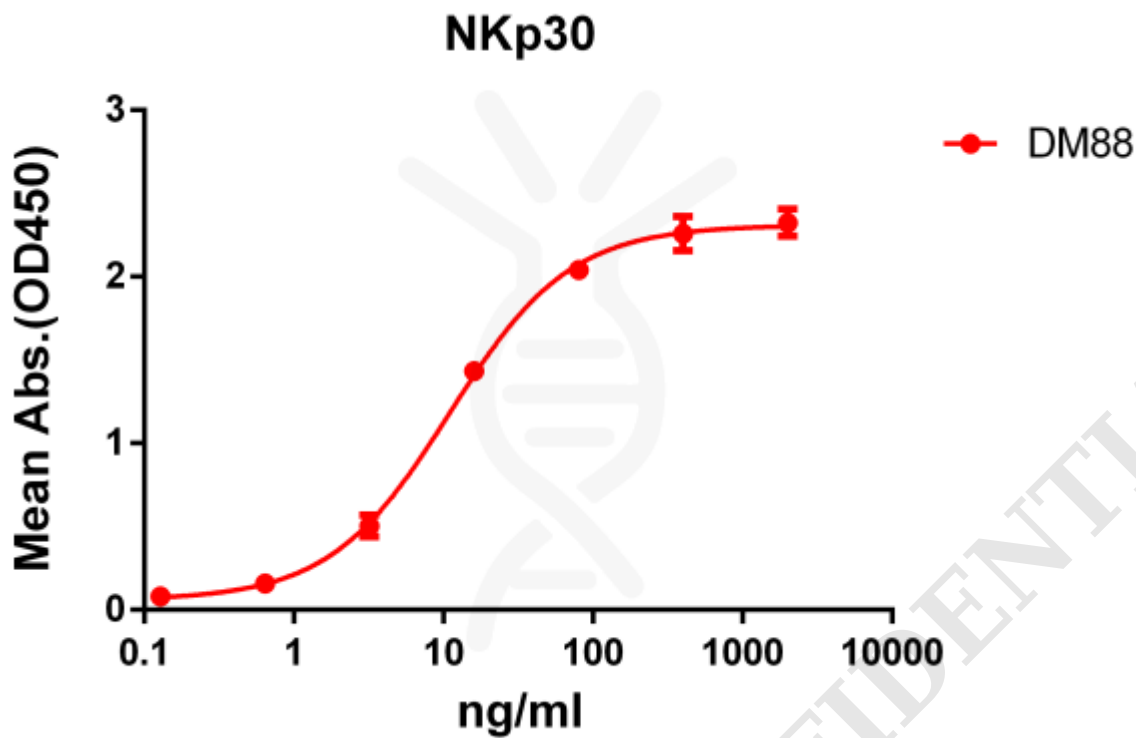


Figure 1. ELISA plate pre-coated by 2 $\mu\text{g/ml}$ (100 $\mu\text{l/well}$) Human NKp30 protein, hFc tagged protein ([getskuurl sku="PME100081"]) can bind Rabbit anti-NKp30 monoclonal antibody (**clone: DM88**) in a linear range of 1-100 ng/ml.

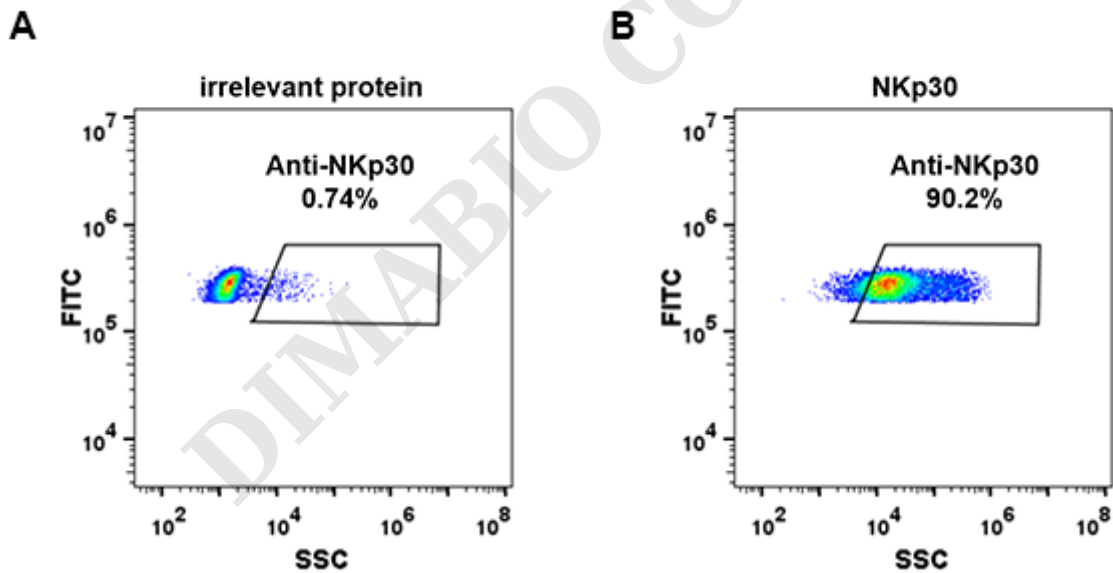


Figure 2. Expi 293 cell line transfected with irrelevant protein (**A**) and human NKp30 (**B**) were surface stained with Rabbit anti-NKp30 monoclonal antibody 15 $\mu\text{g/ml}$ (**clone: DM88**) followed by Alexa 488-conjugated anti-rabbit IgG secondary antibody.

