

PRODUCT INFORMATION

Clone ID	9C4
Target	MMAE
Synonyms	N.A.
Host Species	Rabbit
Description	Anti-MMAE antibody(9C4); Rabbit mAb
Delivery	In Stock
Uniprot ID	N.A.
IgG type	Rabbit IgG
Clonality	Monoclonal
Reactivity	N.A.
Applications	ELISA
Recommended Dilutions	ELISA 1:5000-10000
Purification	Purified from cell culture supernatant by affinity chromatography
Formulation & Reconstitution	Lyophilized from sterile PBS, pH 7.4. Normally 5% - 8% trehalose is added as protectants before lyophilization. Please see Certificate of Analysis for specific instructions of reconstitution. Store at -20°C to -80°C for 12 months in lyophilized form. After reconstitution, if not intended for use within a month, aliquot and store at -80°C (Avoid repeated freezing and thawing). Lyophilized proteins are shipped at ambient temperature.
Storage & Shipping	
Background	N.A.
Usage	Research use only
Conjugate	Unconjugated



ELISA assay to evaluate Anti-MMAE antibody 0.2 μ g Human IgG-MMAE per well

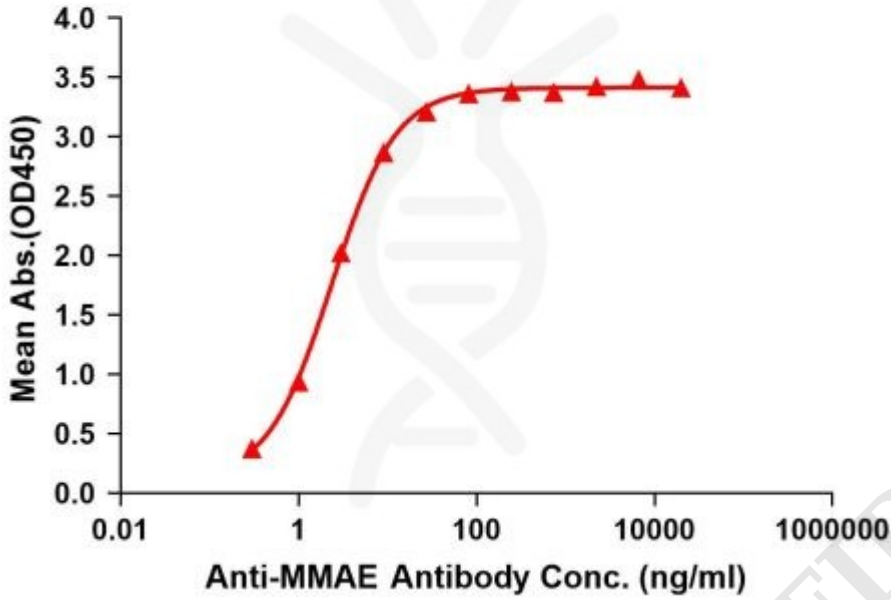


Figure1. Elisa plates were pre-coated with IgG-MMAE (0.2 μ g/per well). Serial diluted anti-MMAE monoclonal antibody (DME101005) solutions were added, washed, and incubated with secondary antibody before Elisa reading. From above data, the EC50 for anti-MMAE monoclonal antibody binding with IgG-MMAE is 2.370ng/ml.

