

PRODUCT INFORMATION

Clone ID	11C8
Target	MMAE
Synonyms	N.A.
Host Species	Rabbit
Description	Anti-MMAE antibody(11C8); Rabbit mAb
Delivery	In Stock
Uniprot ID	N.A.
IgG type	Rabbit IgG
Clonality	Monoclonal
Reactivity	N.A.
Applications	ELISA
Recommended Dilutions	ELISA 1:5000-10000
Purification	Purified from cell culture supernatant by affinity chromatography
Formulation & Reconstitution	Lyophilized from sterile PBS, pH 7.4. Normally 5% - 8% trehalose is added as protectants before lyophilization. Please see Certificate of Analysis for specific instructions of reconstitution.
Storage & Shipping	Store at -20°C to -80°C for 12 months in lyophilized form. After reconstitution, if not intended for use within a month, aliquot and store at -80°C (Avoid repeated freezing and thawing). Lyophilized proteins are shipped at ambient temperature.
Background	N.A.
Usage	Research use only
Conjugate	Unconjugated
DIMA Disclaimer	All DIMA recombinant antibodies are genuinely generated by DIMA Biotech. They are all under patent application. Any protein sequencing or reverse engineering attempt is prohibited. We are actively scrutinizing all patent application to ensure no IP infringement.



ELISA assay to evaluate Anti-MMAE antibody 0.2 μ g Human IgG-MMAE per well

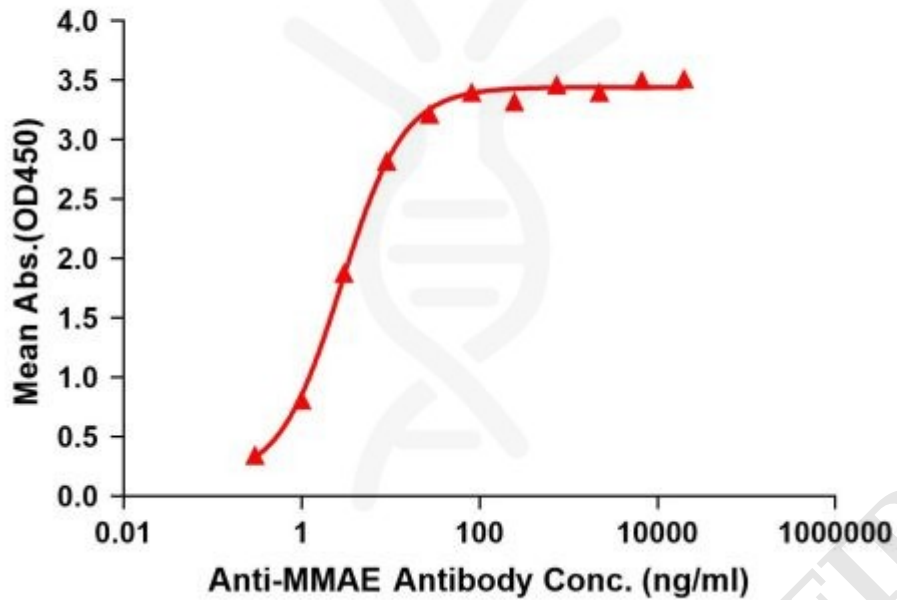


Figure1. Elisa plates were pre-coated with IgG-MMAE (0.2 μ g/per well). Serial diluted anti-MMAE monoclonal antibody (DME101007) solutions were added, washed, and incubated with secondary antibody before Elisa reading. From above data, the EC50 for anti-MMAE monoclonal antibody binding with IgG-MMAE is 2.820ng/ml.

