

PRODUCT INFORMATION

Common Name	LB1902
Conjugate	Unconjugated
Synonyms	MSLN;MPF
Applications	ELISA; Flow Cyt
Recommended Dilutions	ELISA 1:5000-10000; Flow Cyt 1:100
Formulation & Reconstitution	Lyophilized from sterile PBS, pH 7.4. Normally 5% - 8% trehalose is added as protectants before lyophilization. Please see Certificate of Analysis for specific instructions of reconstitution.
Host Species	Humanized
IgG type	IgG1
Reactivity	Human
Target	Mesothelin
Uniprot ID	Q13421
Description	Anti-Mesothelin VHH-human IgG1 Fc
Delivery	In Stock
Storage & Shipping	Store at -20°C to -80°C for 12 months in lyophilized form. After reconstitution, if not intended for use within a month, aliquot and store at -80°C (Avoid repeated freezing and thawing). Lyophilized proteins are shipped at ambient temperature.
Background	Research grade biosimilar. Not for use in therapeutic or diagnostic procedures for humans or animals.
Usage	Research use only
DIMA Disclaimer	All DIMA recombinant antibodies are genuinely generated by DIMA Biotech. They are all under patent application. Any protein sequencing or reverse engineering attempt is prohibited. We are actively scrutinizing all patent application to ensure no IP infringement.



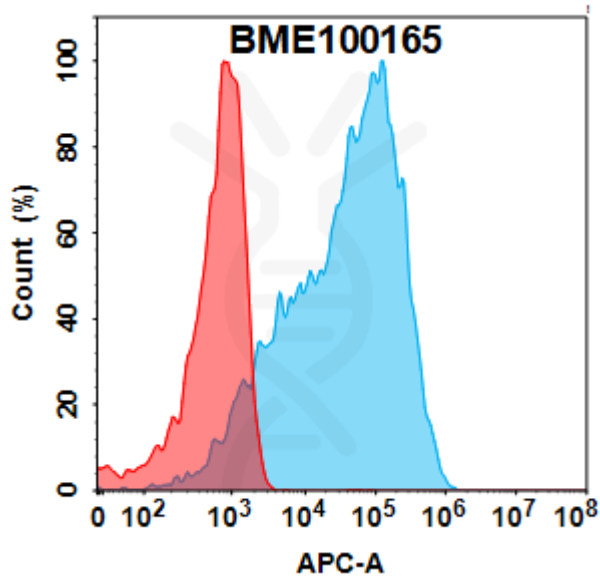


Figure 1. Flow cytometry analysis with 1 μ g/mL Anti-Mesothelin VHH-human IgG1 Fc (BME100165) on Expi293 cells transfected with Human Mesothelin protein (Blue histogram) or Expi293 transfected with irrelevant protein (Red histogram).

Anti-Mesothelin VHH-human IgG1 Fc ELISA

0.2 μ g of Human Mesothelin (296-580), mFc-His tagged protein per well

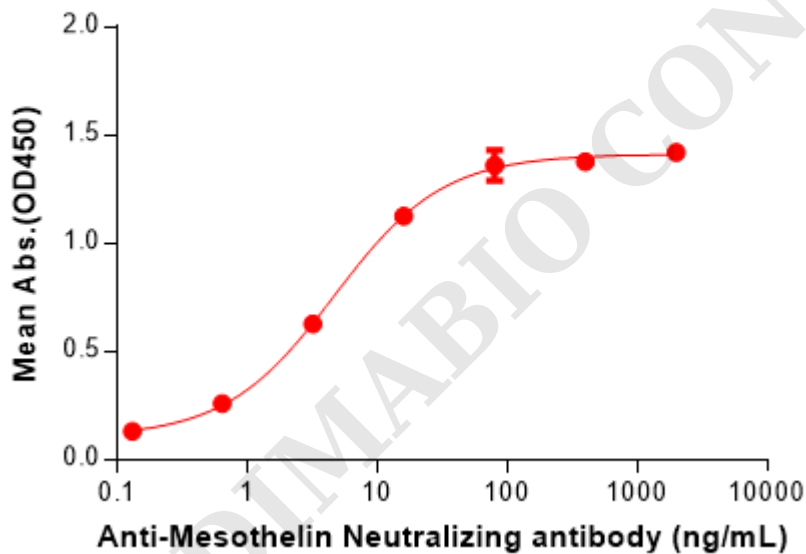


Figure 2. ELISA plate pre-coated by 2 μ g/mL (100 μ L/well) Human Mesothelin (296-580) Protein, mFc-His Tag (PME100031) can bind Anti-Mesothelin VHH-human IgG1 Fc (BME100165) in a linear range of 0.64–16 ng/mL.

