

PRODUCT INFORMATION

Common Name	MCS-110, MCS110
Synonyms	CSF-1;MCSF
Applications	ELISA; Flow Cyt
Recommended Dilutions	ELISA 1:5000-10000; Flow Cyt 1:100
Formulation & Reconstitution	Lyophilized from sterile PBS, pH 7.4. Normally 5% - 8% trehalose is added as protectants before lyophilization. Please see Certificate of Analysis for specific instructions of reconstitution.
Host Species	Humanized
IgG type	IgG1
Reactivity	Human
Target	M-CSF
Uniprot ID	P09603
Description	Anti-M-CSF(Iacnotuzumab biosimilar) mAb
Delivery	In Stock
Storage & Shipping	Store at -20°C to -80°C for 12 months in lyophilized form. After reconstitution, if not intended for use within a month, aliquot and store at -80°C (Avoid repeated freezing and thawing). Lyophilized proteins are shipped at ambient temperature.
Background	Research grade biosimilar. Not for use in therapeutic or diagnostic procedures for humans or animals.
Usage	Research use only
Conjugate	Unconjugated



Anti-M-CSF (lacnotuzumab biosimilar) mAb ELISA

0.2 μ g of Human M-CSF, His tagged protein per well

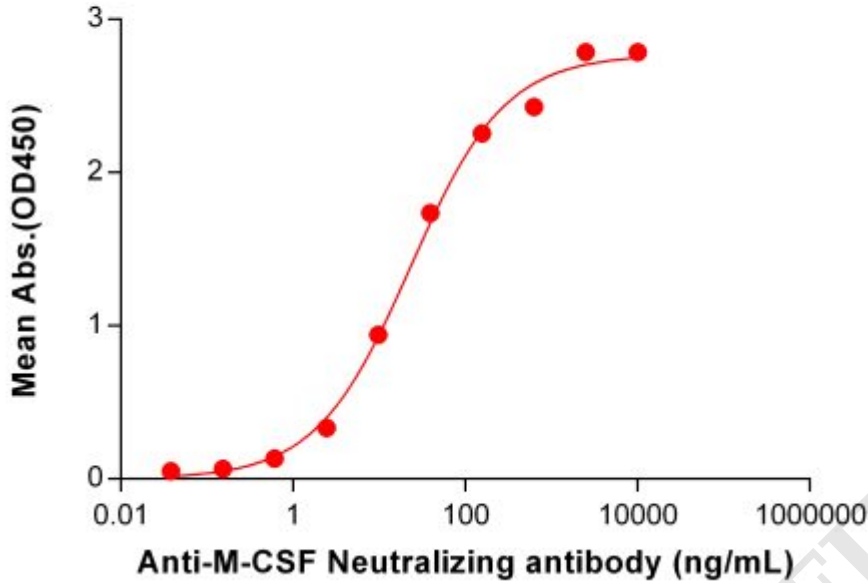


Figure 1. ELISA plate pre-coated by 2 μ g/mL (100 μ L/well) Human M-CSF Protein, His Tag ([getskuurl sku="PME100569"]) can bind Anti-M-CSF Neutralizing antibody (**BME100104**) in a linear range of 2.44-156.25 ng/mL.

Anti-M-CSF (lacnotuzumab biosimilar) mAb ELISA

0.2 μ g of Human M-CSF, hFc tagged protein per well

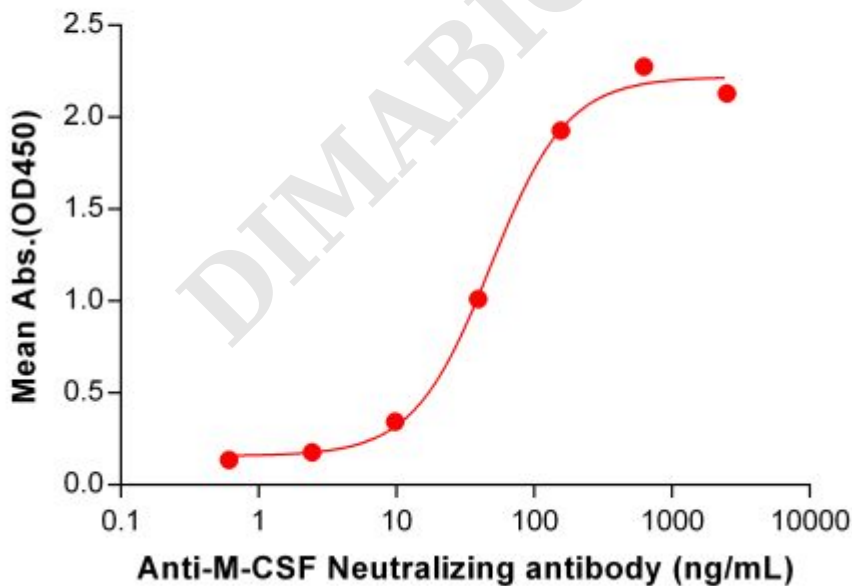


Figure 2. ELISA plate pre-coated by 2 μ g/mL (100 μ L/well) Human M-CSF Protein, hFc Tag (PME100550) can bind Anti-M-CSF Neutralizing antibody (**BME100104**) in a linear range of 9.77-156.25 ng/mL. In order to specifically detect BME100104, mouse anti-human Fab-specific antibody was used as detection antibody.



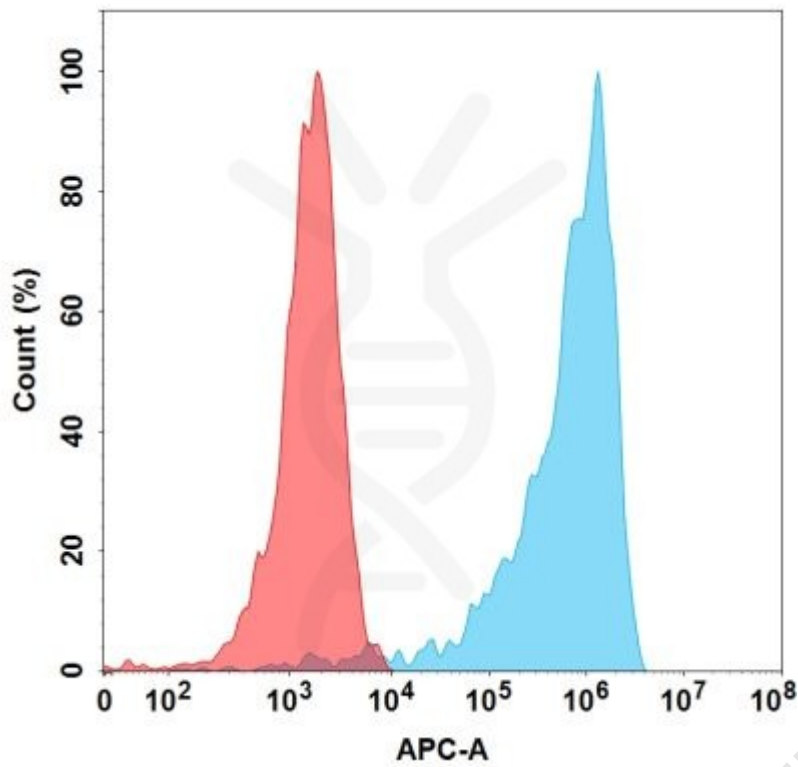


Figure 3. Flow cytometry analysis with 1 µg/mL Anti-M-CSF (lacnotuzumab biosimilar) mAb (BME100104) on Expi293 cells transfected with Human M-CSF protein (Blue histogram) or Expi293 transfected with irrelevant protein (Red histogram).

