

**PRODUCT INFORMATION**

|   |   |
|---|---|
| <b>Uniprot ID</b>                       | Q16553  |
| <b>Common Name</b>                      | ANTI-LY6E□DLYE-5953A□DLYE5953A□RG 7841  |
| <b>Synonyms</b>                         | RIGE; SCA2; RIG-E; SCA-2; TSA-1   |
| <b>Applications</b>                     | ELISA, Flow Cyt   |
| <b>Recommended Dilutions</b>            | ELISA 1:5000-10000, Flow Cyt 1:100  |
| <b>Formulation &amp; Reconstitution</b> | Lyophilized from sterile PBS, pH 7.4. Normally 5% - 8% trehalose is added as protectants before lyophilization. Please see Certificate of Analysis for specific instructions.   |
| <b>Host Species</b>                     | Humanized   |
| <b>IgG type</b>                         | IgG1  |
| <b>Reactivity</b>                       | Human   |
| <b>Target</b>                           | LY6E  |
| <b>Description</b>                      | Anti-LY6E(RG7841 biosimilar) mAb  |
| <b>Delivery</b>                         | In Stock  |
| <b>Storage &amp; Shipping</b>           | Store at -20°C to -80°C for 12 months in lyophilized form. After reconstitution, if not intended for use within a month, aliquot and store at -80°C (Avoid repeated freezing and thawing). Lyophilized antibodies are shipped at ambient temperature. |
| <b>Background</b>                       | Research grade biosimilar. Not for use in therapeutic or diagnostic procedures for humans or animals.   |
| <b>Usage</b>                            | Research use only   |



## Anti-LY6E(RG7841 biosimilar) mAb ELISA

0.2  $\mu$ g of Human LY6E, hFc tagged protein per well

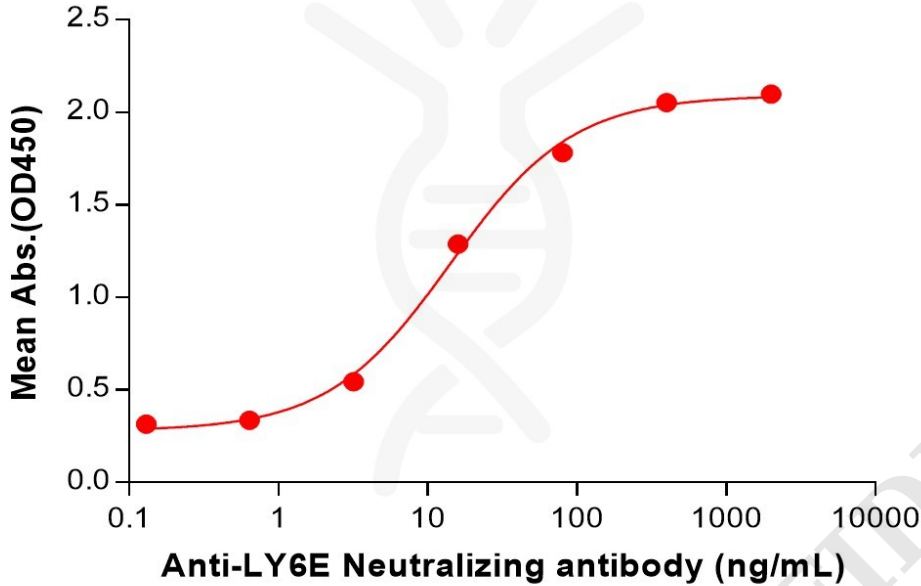


Figure 1. ELISA plate pre-coated by 2  $\mu$ g/mL (100  $\mu$ L/well) Human LY6E Protein, hFc Tag (PME101539) can bind Anti-LY6E(RG7841 biosimilar) mAb (BME100224) in a linear range of 3.20–80 ng/mL. In order to specifically detect BME100224, mouse anti-human Fab-specific antibody was used as detection antibody.

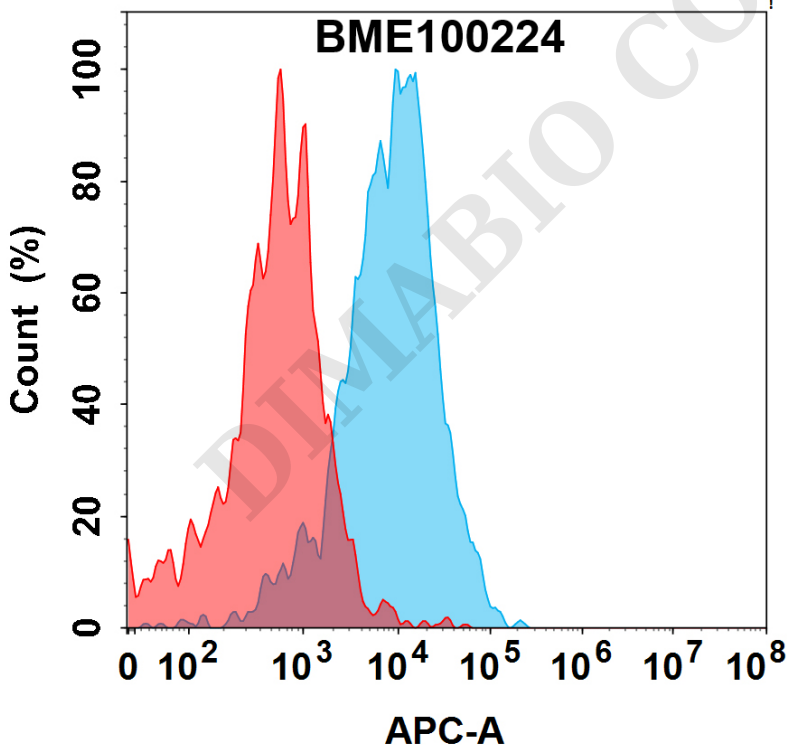


Figure 2. Flow cytometry analysis with 15  $\mu$ g/mL Anti-LY6E(RG7841 biosimilar) mAb (BME100224) on Expi293 cells transfected with Human LY6E protein (Blue histogram) or Expi293 transfected with irrelevant protein (Red histogram).

