

PRODUCT INFORMATION

Clone ID	DM152
Target	IL6R
Synonyms	CD126; gp80; IL-6R-1; IL-6RA; IL6Q; IL6RA; IL6RQ
Host Species	Rabbit
Description	Anti-IL6R antibody(DM152); Rabbit mAb
Delivery	In Stock
Uniprot ID	P08887
IgG type	Rabbit IgG
Clonality	Monoclonal
Reactivity	Human
Applications	ELISA; Flow Cyt
Recommended Dilutions	ELISA 1:5000-10000; Flow Cyt 1:100
Purification	Purified from cell culture supernatant by affinity chromatography
Formulation & Reconstitution	Lyophilized from sterile PBS, pH 7.4. Normally 5 % - 8% trehalose is added as protectants before lyophilization. Please see Certificate of Analysis for specific instructions of reconstitution.
Storage & Shipping	Store at -20°C to -80°C for 12 months in lyophilized form. After reconstitution, if not intended for use within a month, aliquot and store at -80°C (Avoid repeated freezing and thawing). Lyophilized proteins are shipped at ambient temperature.
Background	This gene encodes a subunit of the interleukin 6 (IL6) receptor complex. Interleukin 6 is a potent pleiotropic cytokine that regulates cell growth and differentiation and plays an important role in the immune response. The IL6 receptor is a protein complex consisting of this protein and interleukin 6 signal transducer (IL6ST:GP130:IL6-beta); a receptor subunit also shared by many other cytokines. Dysregulated production of IL6 and this receptor are implicated in the pathogenesis of many diseases; such as multiple myeloma; autoimmune diseases and prostate cancer. Alternatively spliced transcript variants encoding distinct isoforms have been reported. A pseudogene of this gene is found on chromosome 9.
Usage	Research use only



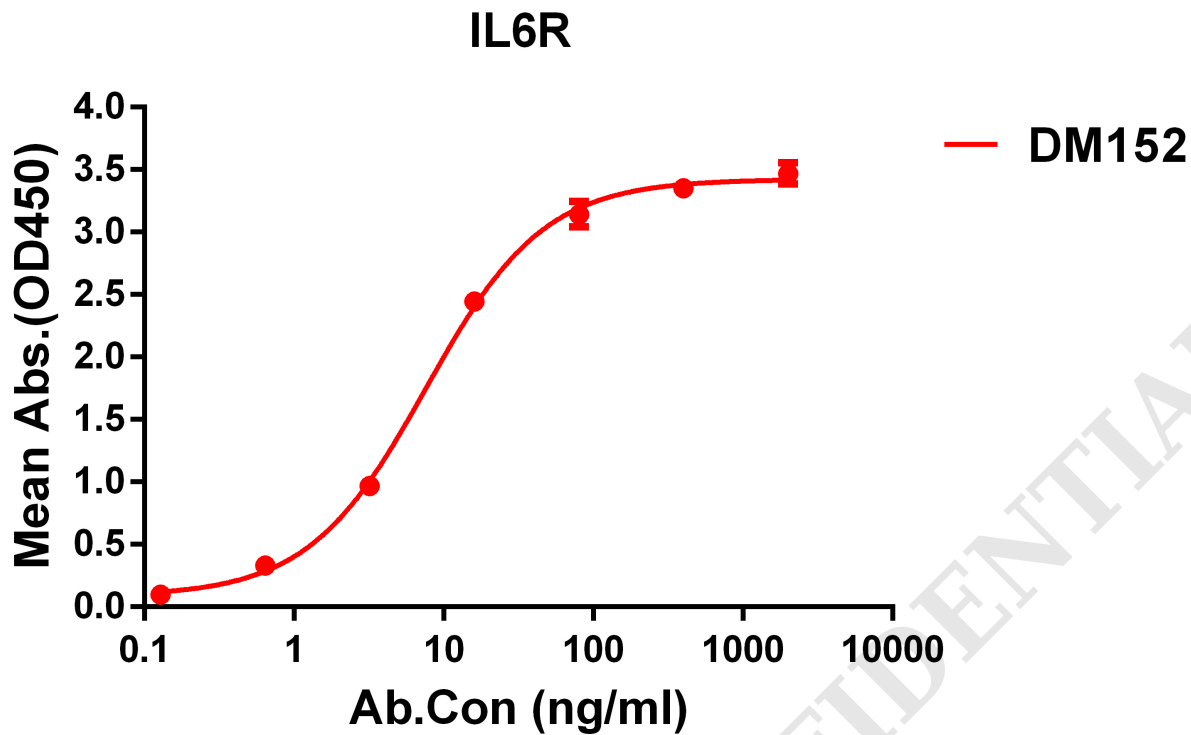


Figure 1. ELISA plate pre-coated by 1 μ g/ml (100 μ l/well) Human IL6R protein, His tagged protein PME100109 can bind Rabbit anti-IL6R monoclonal antibody (clone: DM152) in a linear range of 1-100 ng/ml.

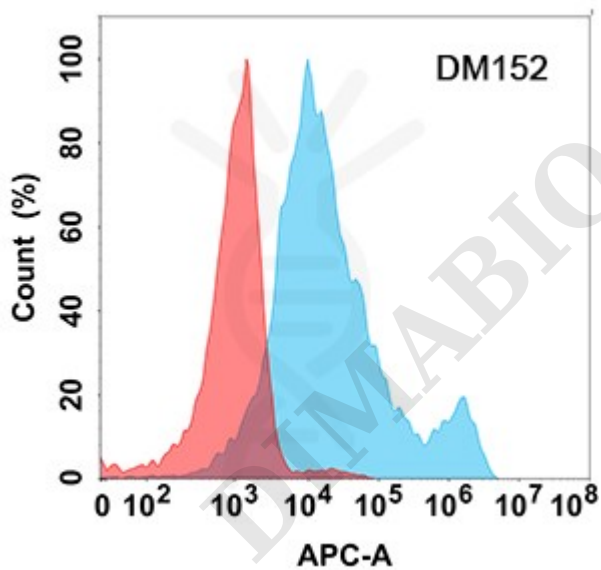


Figure 2. Flow cytometry analysis with Anti-IL-6R (DM152) on Expi293 cells transfected with human IL-6R (Blue histogram) or Expi293 transfected with irrelevant protein (Red histogram).



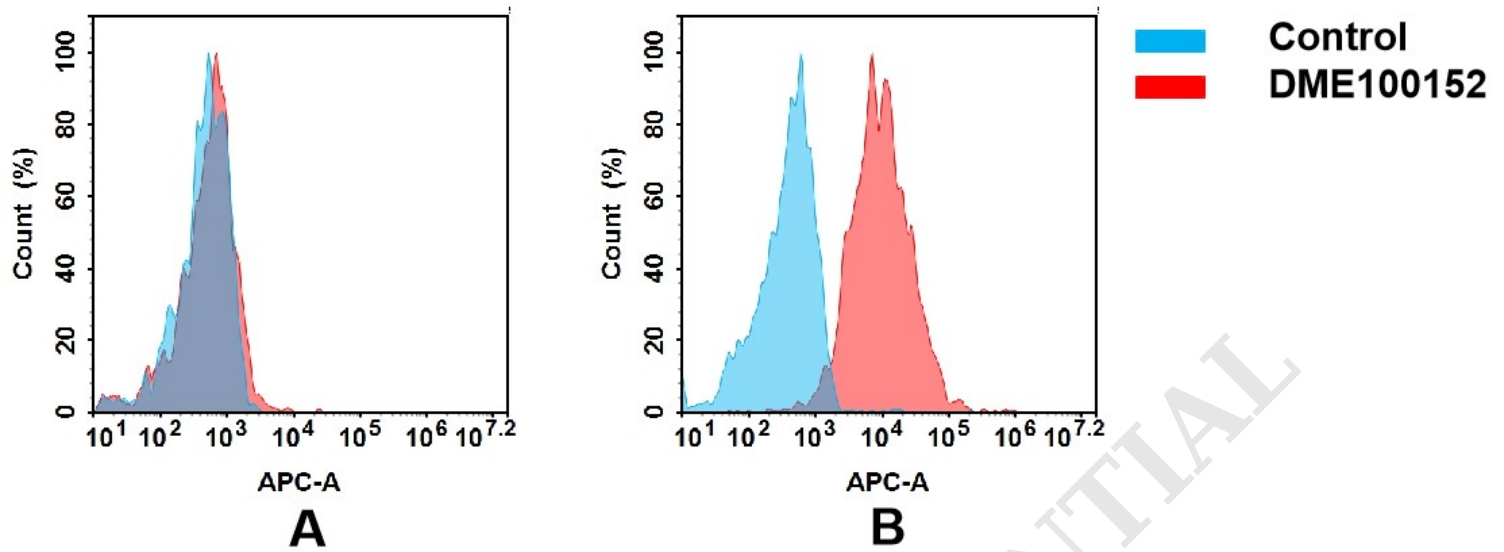


Figure 3. Flow cytometry analysis of antigen binding of rabbit anti-human IL6R mAb(DME100152).

(A) DME100152 does not bind to CHO-S cells that do not express IL6R.

(B) A clear peak shift of DME100152 was seen compared to the control when incubated with IL6R-expressing THP-1 cells, indicating strong binding of DME100152 to IL6R. Antibodies were incubated at 5 $\mu\text{g}/\text{mL}$.

DIMABIO CONFIDENTIAL

