

PRODUCT INFORMATION

Uniprot ID	Q8NI17
Common Name	CIM 331,CIM331
Synonyms	CRL; GPL; CRL3; GLMR; GLM-R; PLCA2; hGLM-R; IL-31RA; PRO21384; zcytoR17
Applications	ELISA, Flow Cyt
Recommended Dilutions	ELISA 1:5000-10000, Flow Cyt 1:100
Formulation & Reconstitution	Lyophilized from sterile PBS, pH 7.4. Normally 5 % - 8% trehalose is added as protectants before lyophilization. Please see Certificate of Analysis for specific instructions of reconstitution.
Host Species	Humanized
IgG type	IgG2(C14S,R16K,E20G,S21G,C102S,H147Q,R234Q,S257A,Q298E)
Reactivity	Human
Target	IL31RA
Description	Anti-IL31RA(nemolizumab biosimilar) mAb
Delivery	In Stock
Storage & Shipping	Store at -20°C to -80°C for 12 months in lyophilized form. After reconstitution, if not intended for use within a month, aliquot and store at -80°C (Avoid repeated freezing and thawing). Lyophilized antibodies are shipped at ambient temperature.
Background	Research grade biosimilar. Not for use in therapeutic or diagnostic procedures for humans or animals.
Usage	Research use only

Anti-IL31RA(nemolizumab biosimilar) mAb ELISA

0.2 µg of Human IL31RA, His tagged protein per well

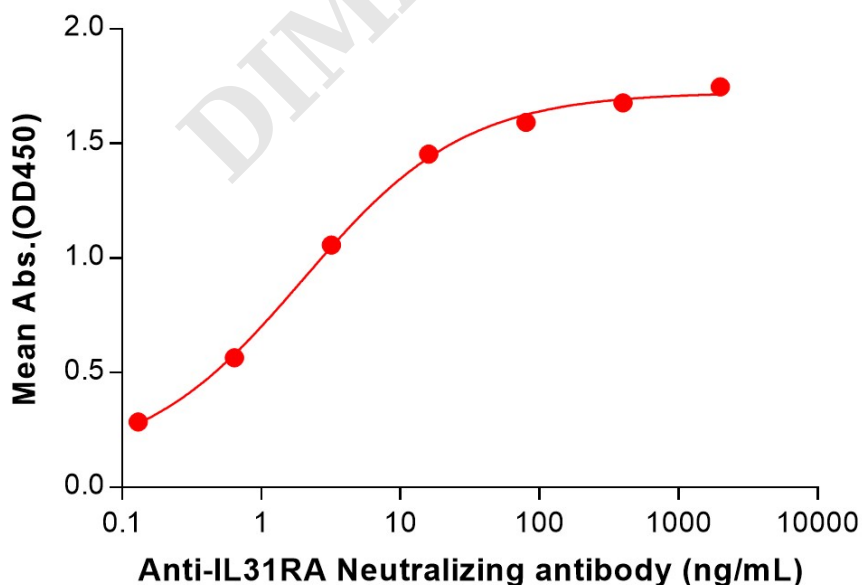


Figure 1. ELISA plate pre-coated by 2 $\mu\text{g}/\text{mL}$ (100 $\mu\text{L}/\text{well}$) Human IL31RA Protein, His Tag (PME101406) can bind Anti-IL31RA(nemolizumab biosimilar) mAb (BME100231) in a linear range of 0.13–16 ng/mL .

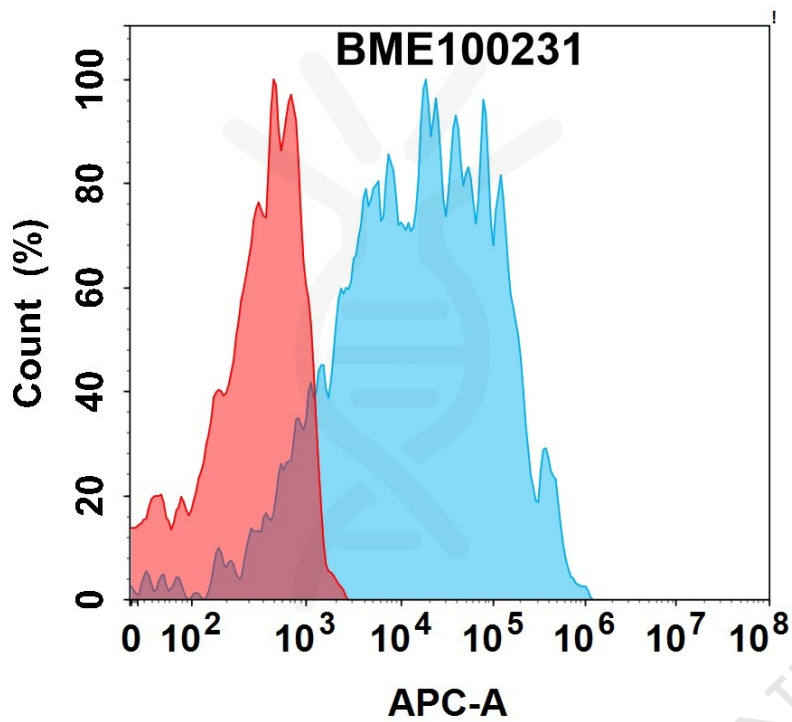


Figure 2. Flow cytometry analysis with 1 $\mu\text{g}/\text{mL}$ Anti-IL31RA(nemolizumab biosimilar) mAb (BME100231) on Expi293 cells transfected with Human IL31RA and OSMR protein (Blue histogram) or Expi293 transfected with Human OSMR protein (Red histogram).

