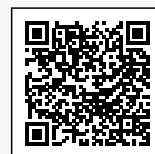


**PRODUCT INFORMATION**

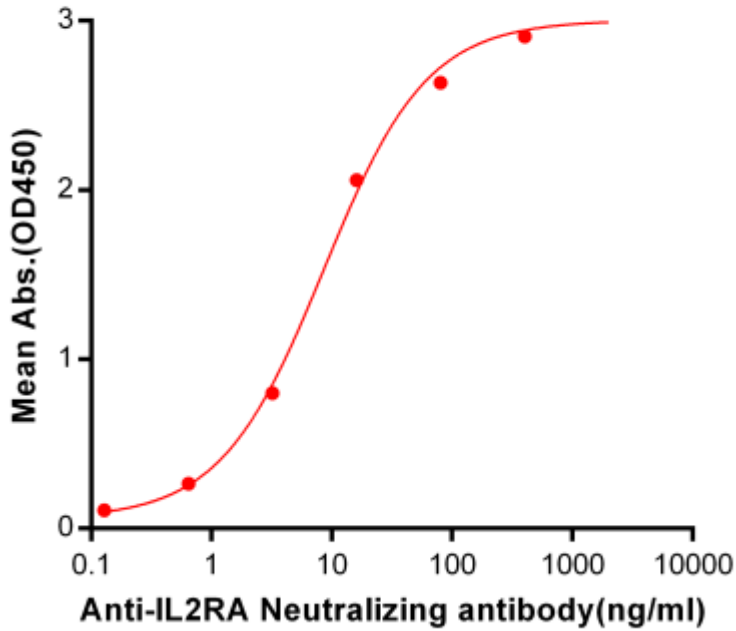
<b>Common Name</b>	CHI621
<b>Synonyms</b>	IL2RA;CD25;p55;IL2-RA;IL-2-RA
<b>Applications</b>	ELISA; Flow Cyt
<b>Recommended Dilutions</b>	ELISA 1:5000-10000; Flow Cyt 1:100
<b>Formulation &amp; Reconstitution</b>	Lyophilized from sterile PBS, pH 7.4. Normally 5% - 8% trehalose is added as protectants before lyophilization. Please see Certificate of Analysis for specific instructions of reconstitution.
<b>Host Species</b>	Chimeric
<b>IgG type</b>	IgG1
<b>Reactivity</b>	Human
<b>Target</b>	IL2RA
<b>Uniprot ID</b>	P01589
<b>Description</b>	Anti-IL2RA (basiliximab biosimilar) mAb
<b>Delivery</b>	In Stock
<b>Storage &amp; Shipping</b>	Store at -20°C to -80°C for 12 months in lyophilized form. After reconstitution, if not intended for use within a month, aliquot and store at -80°C (Avoid repeated freezing and thawing). Lyophilized proteins are shipped at ambient temperature.
<b>Background</b>	Research grade biosimilar. Not for use in therapeutic or diagnostic procedures for humans or animals.
<b>Usage</b>	Research use only
<b>Conjugate</b>	Unconjugated

DIMA BIO CONFIDENTIAL

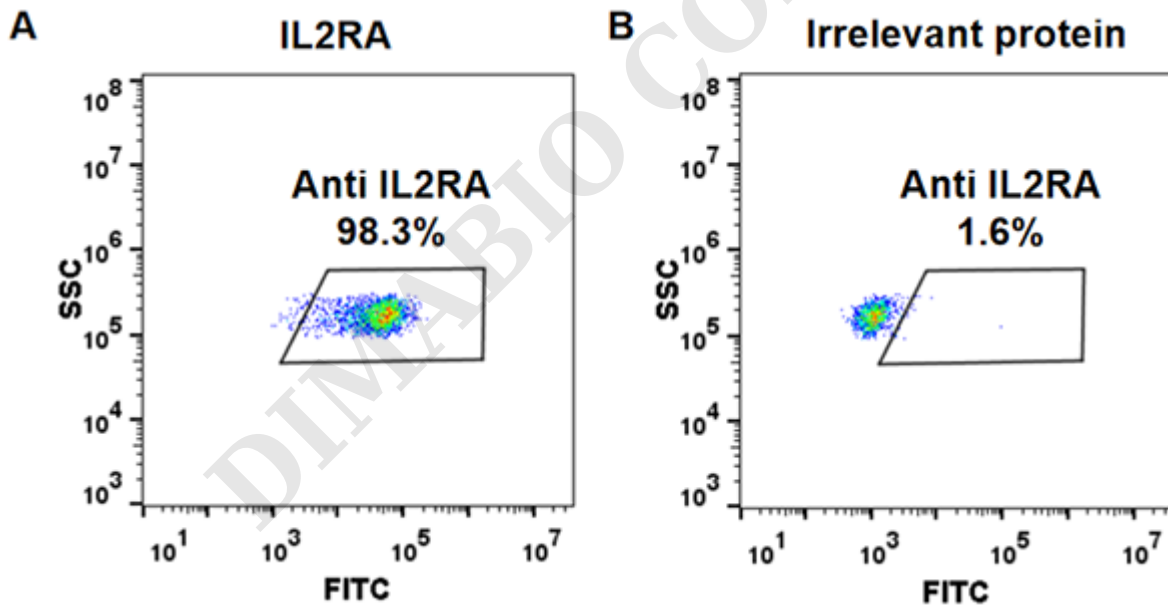


## Anti-IL2RA (basiliximab biosimilar) mAb ELISA

0.2 µg of Human IL2RA, His Tagged protein per well



**Figure 1.** ELISA plate pre-coated by 2 µg/ml (100 µl/well) Human IL2RA, His tagged protein ([getskuurl sku="PME100098"]) can bind Anti-IL2RA Neutralizing antibody (BME100043) in a linear range of 0.64-400 ng/ml.



**Figure 2.** HEK293 cell line transfected with irrelevant protein (**B**) and human IL2RA (**A**) were surface stained with Anti-IL2RA mAb 1 µg/ml (basiliximab) followed by Alexa 488-conjugated anti-human IgG secondary antibody.

