

PRODUCT INFORMATION

Clone ID	DMC225
Target	IL21R
Synonyms	CD360; IMD56; NILR
Host Species	Rabbit
Description	Anti-IL21R antibody(DMC225); IgG1 Chimeric mAb
Delivery	In Stock
Uniprot ID	Q9HBE5
IgG type	Rabbit/Human Fc chimeric IgG1
Clonality	Monoclonal
Reactivity	Human
Applications	ELISA; Flow Cyt
Recommended Dilutions	ELISA 1:5000-10000; Flow Cyt 1:100
Purification	Purified from cell culture supernatant by affinity chromatography
Formulation & Reconstitution	Lyophilized from sterile PBS, pH 7.4. Normally 5 % - 8% trehalose is added as protectants before lyophilization. Please see Certificate of Analysis for specific instructions of reconstitution. Store at -20°C to -80°C for 12 months in lyophilized form. After reconstitution, if not intended for use within a month, aliquot and store at -80°C (Avoid repeated freezing and thawing). Lyophilized proteins are shipped at ambient temperature.
Storage & Shipping	
Background	The protein encoded by this gene is a cytokine receptor for interleukin 21 (IL21). It belongs to the type I cytokine receptors; and has been shown to form a heterodimeric receptor complex with the common gamma-chain; a receptor subunit also shared by the receptors for interleukin 2; 4; 7; 9; and 15. This receptor transduces the growth promoting signal of IL21; and is important for the proliferation and differentiation of T cells; B cells; and natural killer (NK) cells. The ligand binding of this receptor leads to the activation of multiple downstream signaling molecules; including JAK1; JAK3; STAT1; and STAT3. Knockout studies of a similar gene in mouse suggest a role for this gene in regulating immunoglobulin production. Three alternatively spliced transcript variants have been described.
Usage	Research use only
Conjugate	Unconjugated
DIMA Disclaimer	All DIMA recombinant antibodies are genuinely generated by DIMA Biotech. They are all under patent application. Any protein sequencing or reverse engineering attempt is prohibited. We are actively scrutinizing all patent application to ensure no IP infringement.



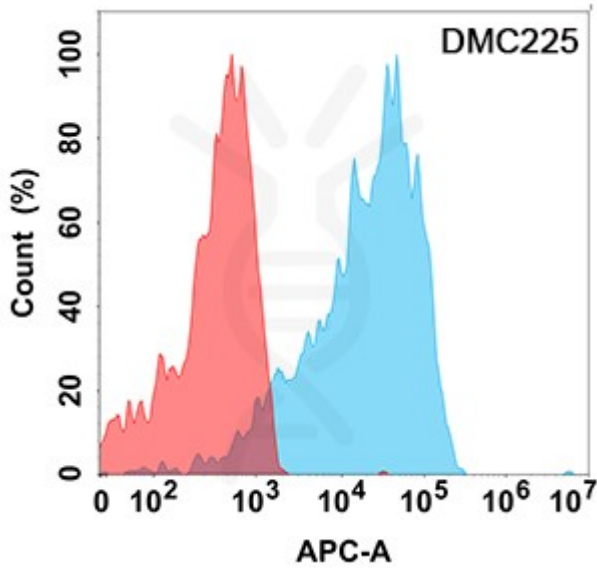


Figure 1. Flow cytometry analysis with Anti-IL21R (DMC225) on Expi293 cells transfected with human IL21R (Blue histogram) or Expi293 transfected with irrelevant protein (Red histogram).

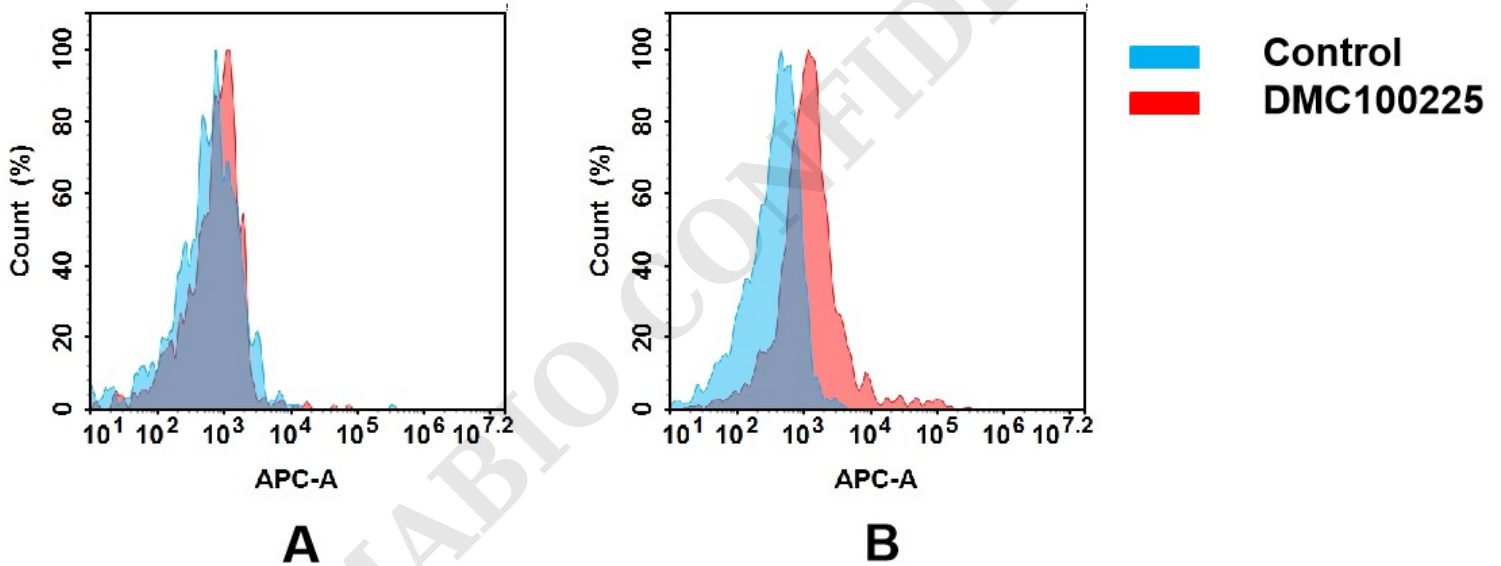


Figure 2. Flow cytometry analysis of antigen binding of anti-human IL21R mAb(DMC100225).

(A) DMC100225 does not bind to 293T cells that do not express IL21R.

(B) A clear peak shift of DMC100225 was seen compared to the control when incubated with IL21R-expressing Raji cells, indicating strong binding of DMC100225 to IL21R. Antibodies were incubated at 5 µg/mL.

