

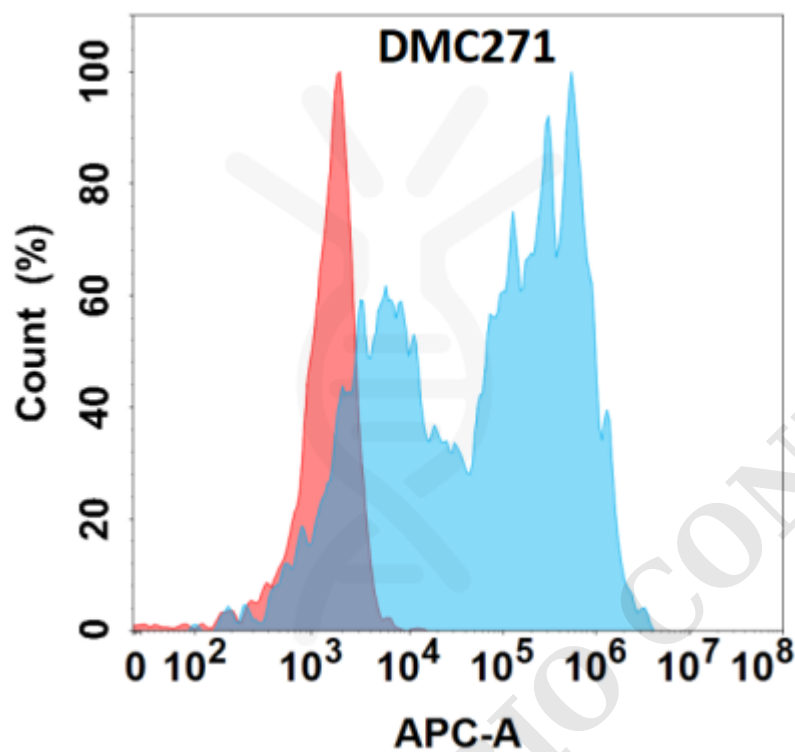
**PRODUCT INFORMATION**

<b>Clone ID</b>	DMC271
<b>Target</b>	IL1B
<b>Synonyms</b>	IL-1; IL1-BETA; IL1F2
<b>Host Species</b>	Rabbit
<b>Description</b>	Anti-IL1B antibody(DMC271); IgG1 Chimeric mAb
<b>Delivery</b>	In Stock
<b>Uniprot ID</b>	P01584
<b>IgG type</b>	Rabbit/Human Fc chimeric IgG1
<b>Clonality</b>	Monoclonal
<b>Reactivity</b>	Human
<b>Applications</b>	Flow Cyt
<b>Recommended Dilutions</b>	Flow Cyt 1:100
<b>Purification</b>	Purified from cell culture supernatant by affinity chromatography
<b>Formulation &amp; Reconstitution</b>	Lyophilized from sterile PBS, pH 7.4. Normally 5 % - 8% trehalose is added as protectants before lyophilization. Please see Certificate of Analysis for specific instructions of reconstitution.
<b>Storage &amp; Shipping</b>	Store at -20°C to -80°C for 12 months in lyophilized form. After reconstitution, if not intended for use within a month, aliquot and store at -80°C (Avoid repeated freezing and thawing). Lyophilized proteins are shipped at ambient temperature.
<b>Background</b>	The protein encoded by this gene is a member of the interleukin 1 cytokine family. This cytokine is produced by activated macrophages as a proprotein; which is proteolytically processed to its active form by caspase 1 (CASP1:ICE). This cytokine is an important mediator of the inflammatory response; and is involved in a variety of cellular activities; including cell proliferation; differentiation; and apoptosis. The induction of cyclooxygenase-2 (PTGS2:COX2) by this cytokine in the central nervous system (CNS) is found to contribute to inflammatory pain hypersensitivity. Similarly; IL-1B has been implicated in human osteoarthritis pathogenesis. Patients with severe Coronavirus Disease 2019 (COVID-19) present elevated levels of pro-inflammatory cytokines such as IL-1B in bronchial alveolar lavage fluid samples. The lung damage induced by the Severe acute respiratory syndrome coronavirus 2 (SARS-CoV-2) is to a large extent; a result of the inflammatory response promoted by cytokines such as IL-1B. This gene and eight other interleukin 1 family genes form a cytokine gene cluster on chromosome 2.
<b>Usage</b>	Research use only
<b>Conjugate</b>	Unconjugated



**DIMA Disclaimer**

All DIMA recombinant antibodies are genuinely generated by DIMA Biotech. They are all under patent application. Any protein sequencing or reverse engineering attempt is prohibited. We are actively scrutinizing all patent application to ensure no IP infringement.



**Figure 1.** Flow cytometry analysis with Anti-IL1B (DMC271) on Expi293 cells transfected with human IL1B (Blue histogram) or Expi293 transfected with irrelevant protein (Red histogram).

