

**PRODUCT INFORMATION**

<b>Uniprot ID</b>	P78552
<b>Common Name</b>	ASLAN004, ASLAN-004, CSL-334
<b>Conjugate</b>	Unconjugated
<b>Synonyms</b>	IL13R; IL13RA; CD213a1; CT19
<b>Applications</b>	ELISA, Flow Cyt
<b>Recommended Dilutions</b>	ELISA 1:5000-10000, Flow Cyt 1:100
<b>Formulation &amp; Reconstitution</b>	Lyophilized from sterile PBS, pH 7.4. Normally 5% - 8% trehalose is added as protectants before lyophilization. Please see Certificate of Analysis for specific instructions of reconstitution.
<b>Host Species</b>	Homo sapiens
<b>IgG type</b>	IgG4
<b>Reactivity</b>	Human
<b>Target</b>	IL13RA1
<b>Description</b>	Anti-IL13RA1(eblasakimab biosimilar) mAb
<b>Delivery</b>	In Stock
<b>Storage &amp; Shipping</b>	Store at -20°C to -80°C for 12 months in lyophilized form. After reconstitution, if not intended for use within a month, aliquot and store at -80°C (Avoid repeated freezing and thawing). Lyophilized antibodies are shipped at ambient temperature.
<b>Background</b>	Research grade biosimilar. Not for use in therapeutic or diagnostic procedures for humans or animals.
<b>Usage</b>	Research use only
<b>DIMA Disclaimer</b>	All DIMA recombinant antibodies are genuinely generated by DIMA Biotech. They are all under patent application. Any protein sequencing or reverse engineering attempt is prohibited. We are actively scrutinizing all patent application to ensure no IP infringement.



## Anti-IL13RA1(eblasakimab biosimilar) mAb ELISA

0.2  $\mu$ g of Human IL13RA1, His tagged protein per well

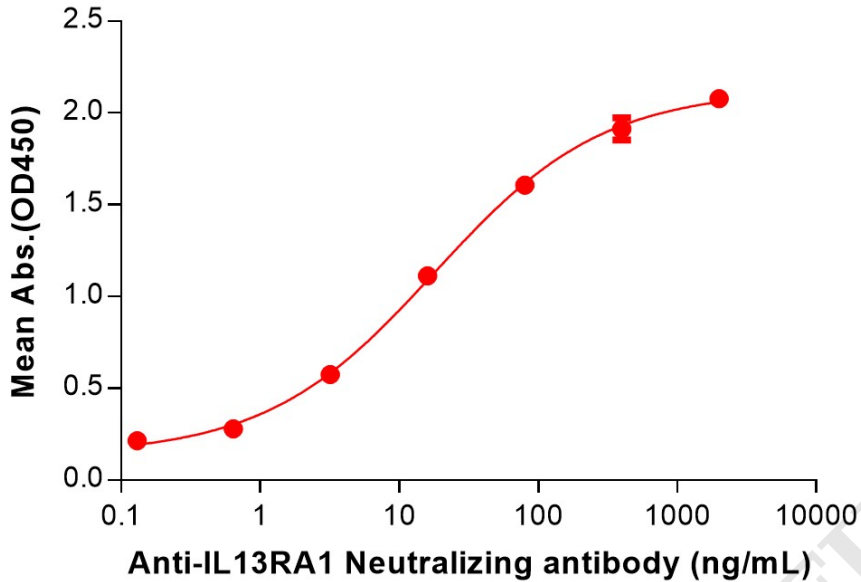


Figure 1. ELISA plate pre-coated by 2  $\mu$ g/mL (100  $\mu$ L/well) Human IL13RA1 Protein, His Tag (PME100291) can bind Anti-IL13RA1(eblasakimab biosimilar) mAb (BME100240) in a linear range of 0.64-80 ng/mL.

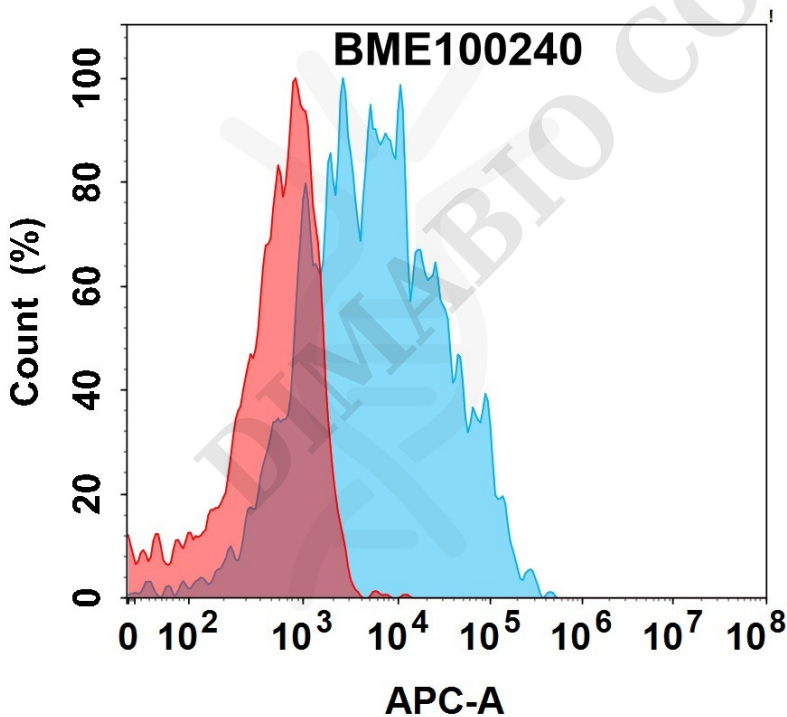


Figure 2. Flow cytometry analysis with 1 $\mu$ g/mL Anti-IL13RA1(eblasakimab biosimilar) mAb (BME100240) on Expi293 cells transfected with Human IL13RA and IL4RA protein (Blue histogram) or Expi293 transfected with Human IL4RA protein (Red histogram).

