

PRODUCT INFORMATION

| | |
|---|---|
| Clone ID | DM183 |
| Target | IL13RA1 |
| Synonyms | CD213A1; CT19; IL-13Ra; NR4 |
| Host Species | Rabbit |
| Description | Anti-IL13RA1 antibody(DM183); Rabbit mAb |
| Delivery | In Stock |
| Uniprot ID | P78552 |
| IgG type | Rabbit IgG |
| Clonality | Monoclonal |
| Reactivity | Human |
| Applications | ELISA; Flow Cyt |
| Recommended Dilutions | ELISA 1:5000-10000; Flow Cyt 1:100 |
| Purification | Purified from cell culture supernatant by affinity chromatography |
| Formulation & Reconstitution | Lyophilized from sterile PBS, pH 7.4. Normally 5 % - 8% trehalose is added as protectants before lyophilization. Please see Certificate of Analysis for specific instructions of reconstitution. |
| Storage & Shipping | Store at -20°C to -80°C for 12 months in lyophilized form. After reconstitution, if not intended for use within a month, aliquot and store at -80°C (Avoid repeated freezing and thawing). Lyophilized proteins are shipped at ambient temperature. |
| Background | The protein encoded by this gene is a subunit of the interleukin 13 receptor. This subunit forms a receptor complex with IL4 receptor alpha; a subunit shared by IL13 and IL4 receptors. This subunit serves as a primary IL13-binding subunit of the IL13 receptor; and may also be a component of IL4 receptors. This protein has been shown to bind tyrosine kinase TYK2; and thus may mediate the signaling processes that lead to the activation of JAK1; STAT3 and STAT6 induced by IL13 and IL4. |
| Usage | Research use only |



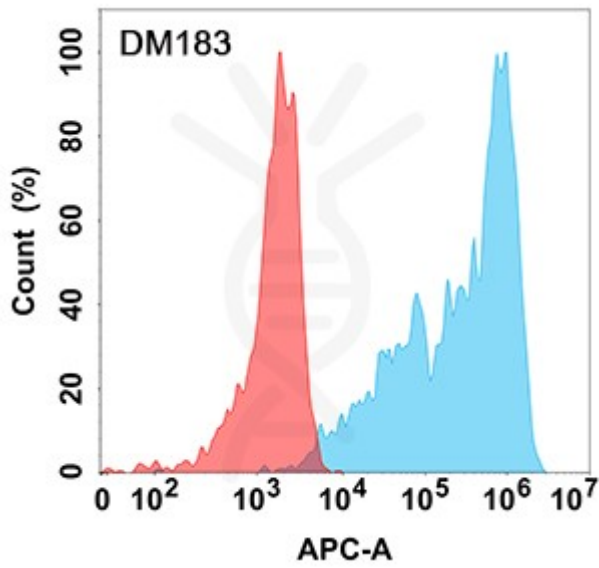


Figure 1. Flow cytometry analysis with Anti-IL13RA1 (DM183) on Expi293 cells transfected with human IL13RA1 (Blue histogram) or Expi293 transfected with irrelevant protein (Red histogram).

DIMABIO CONFIDENTIAL

