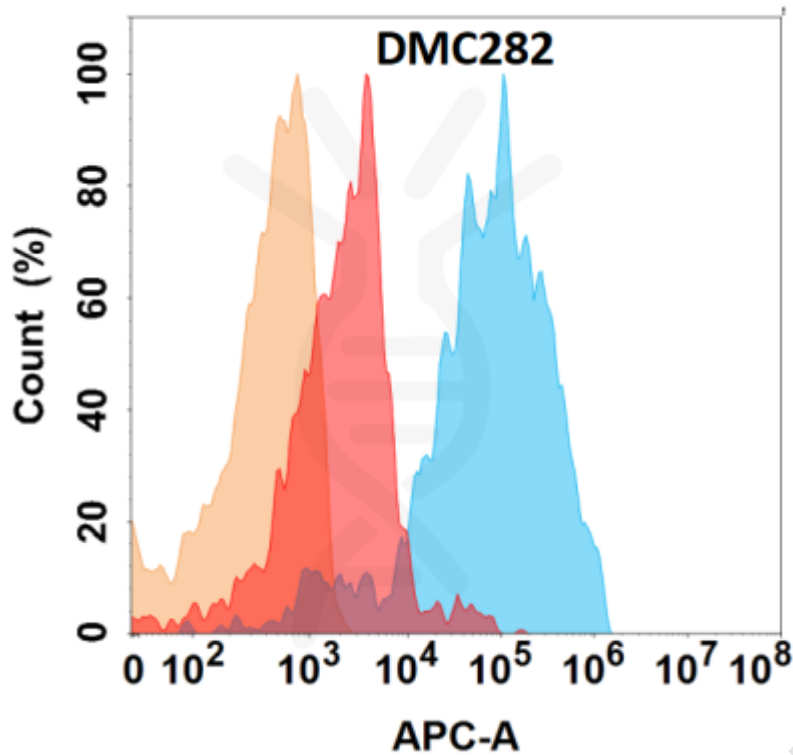


**PRODUCT INFORMATION**

<b>Clone ID</b>	DMC282
<b>Target</b>	IL11RA
<b>Synonyms</b>	IL-11 R alpha;IL-11 RA;IL11RA;Interleukin-11 receptor subunit alpha;IL-11 receptor subunit alpha;IL-11R subunit alpha;IL-11R-alpha
<b>Host Species</b>	Rabbit
<b>Description</b>	Anti-IL11RA antibody(DMC282); IgG1 Chimeric mAb
<b>Delivery</b>	In Stock
<b>Uniprot ID</b>	Q14626
<b>IgG type</b>	Rabbit/Human Fc chimeric IgG1
<b>Clonality</b>	Monoclonal
<b>Reactivity</b>	Human
<b>Applications</b>	Flow Cyt
<b>Recommended Dilutions</b>	Flow Cyt 1:100
<b>Purification</b>	Purified from cell culture supernatant by affinity chromatography
<b>Formulation &amp; Reconstitution</b>	Lyophilized from sterile PBS, pH 7.4. Normally 5 % - 8% trehalose is added as protectants before lyophilization. Please see Certificate of Analysis for specific instructions of reconstitution.
<b>Storage &amp; Shipping</b>	Store at -20°C to -80°C for 12 months in lyophilized form. After reconstitution, if not intended for use within a month, aliquot and store at -80°C (Avoid repeated freezing and thawing). Lyophilized proteins are shipped at ambient temperature.
<b>Background</b>	Interleukin 11 is a stromal cell-derived cytokine that belongs to a family of pleiotropic and redundant cytokines that use the gp130 transducing subunit in their high affinity receptors. This gene encodes the IL-11 receptor; which is a member of the hematopoietic cytokine receptor family. This particular receptor is very similar to ciliary neurotrophic factor; since both contain an extracellular region with a 2-domain structure composed of an immunoglobulin-like domain and a cytokine receptor-like domain. Multiple alternatively spliced transcript variants have been found for this gene.
<b>Usage</b>	Research use only
<b>Conjugate</b>	Unconjugated





**Figure 1.** IL11RA protein is highly expressed on the surface of Expi293 cell membrane. Flow cytometry analysis with Anti-IL11RA (DMC282) on Expi293 cells transfected with human IL11RA (Blue histogram) or Expi293 transfected with irrelevant protein (Red histogram), and Isotype antibody on Expi293 transfected with irrelevant protein (Orange histogram).

