

PRODUCT INFORMATION

Clone ID	DM126
Target	IL17RA
Synonyms	CD217;CDw217;IL-17RA;IL17R;CANDF5;hIL-17R
Host Species	Rabbit
Description	Anti-IL17RA antibody(DM126); Rabbit mAb
Delivery	In Stock
Uniprot ID	Q96F46
IgG type	Rabbit IgG
Clonality	Monoclonal
Reactivity	Human
Applications	ELISA; Flow Cyt
Recommended Dilutions	ELISA 1:5000-10000; Flow Cyt 1:100
Purification	Purified from cell culture supernatant by affinity chromatography
Formulation & Reconstitution	Lyophilized from sterile PBS, pH 7.4. Normally 5 % - 8% trehalose is added as protectants before lyophilization. Please see Certificate of Analysis for specific instructions of reconstitution.
Storage & Shipping	Store at -20°C to -80°C for 12 months in lyophilized form. After reconstitution, if not intended for use within a month, aliquot and store at -80°C (Avoid repeated freezing and thawing). Lyophilized proteins are shipped at ambient temperature.
Background	Interleukin 17A (IL-17A) is a proinflammatory cytokine secreted by activated T-lymphocytes. It is a potent inducer of the maturation of CD34-positive hematopoietic precursors into neutrophils. The transmembrane protein encoded by this gene (interleukin 17A receptor; IL17RA) is a ubiquitous type I membrane glycoprotein that binds with low affinity to interleukin 17A. Interleukin 17A and its receptor play a pathogenic role in many inflammatory and autoimmune diseases such as rheumatoid arthritis. Like other cytokine receptors; this receptor likely has a multimeric structure. Alternative splicing results in multiple transcript variants encoding different isoforms.
Usage	Research use only. All DIMA recombinant antibodies are genuinely generated by DIMA Biotech. They are all under patent application. Any protein sequencing or reverse engineering attempt is prohibited. We are actively scrutinizing all patent application to ensure no IP infringement.
Conjugate	Unconjugated



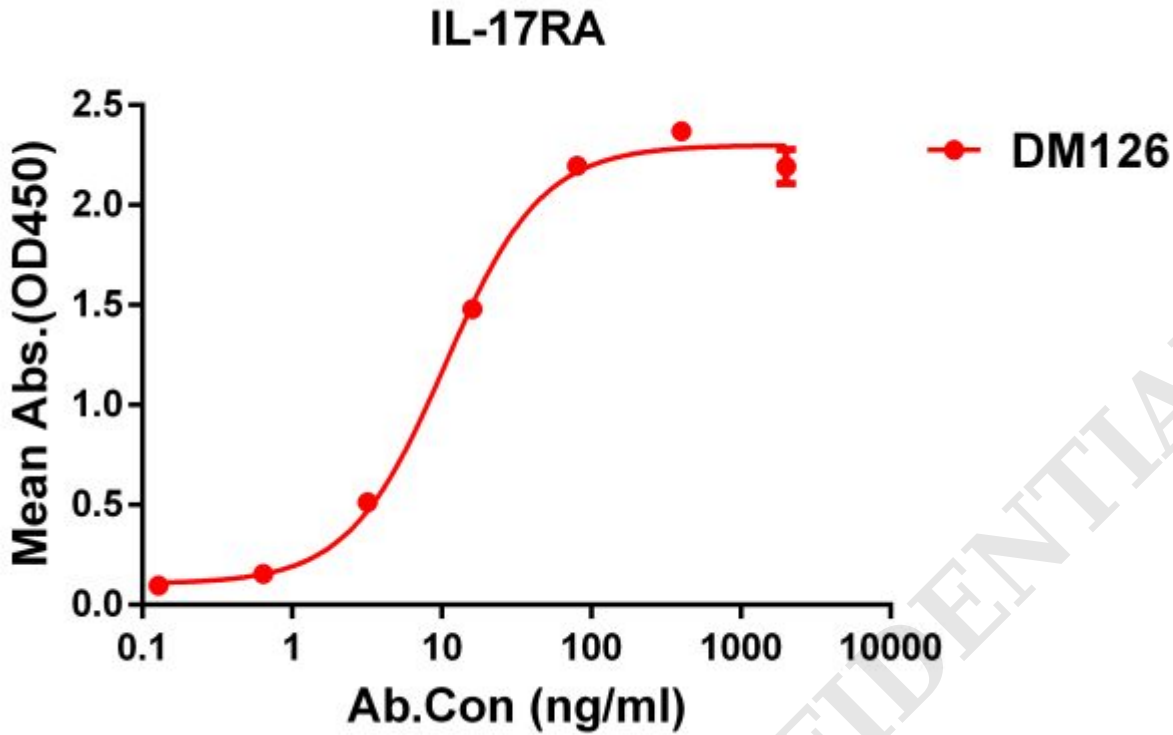


Figure 1. ELISA plate pre-coated by 1 μ g/ml (100 μ l/well) Human IL-17RA protein, His tagged protein ([getskuurl sku="PME100468"]) can bind Rabbit anti-IL-17RA monoclonal antibody (**clone: DM126**) in a linear range of 0. 3-15 ng/ml.

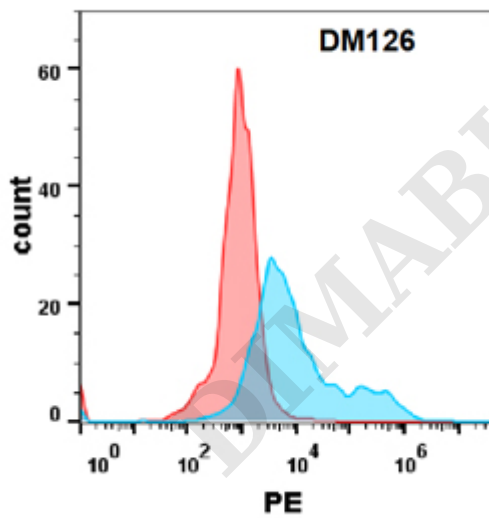


Figure 2. Flow cytometry analysis with Anti-IL-17RA (**DM126**) on Expi293 cells transfected with human IL17RA(Blue histogram) or Expi293 transfected with irrelevant protein (Red histogram).

