

**PRODUCT INFORMATION**

|                                         |                                                                                                                                                                                                                                                      |
|-----------------------------------------|------------------------------------------------------------------------------------------------------------------------------------------------------------------------------------------------------------------------------------------------------|
| <b>Common Name</b>                      | RO4858696-000,teprotumumab-trbw                                                                                                                                                                                                                      |
| <b>Synonyms</b>                         | CD221, IGFIR, IGFR, JTK13                                                                                                                                                                                                                            |
| <b>Applications</b>                     | Flow Cyt                                                                                                                                                                                                                                             |
| <b>Recommended Dilutions</b>            | Flow Cyt 1:100                                                                                                                                                                                                                                       |
| <b>Formulation &amp; Reconstitution</b> | Lyophilized from sterile PBS, pH 7.4. Normally 5% - 8% trehalose is added as protectants before lyophilization. Please see Certificate of Analysis for specific instructions.                                                                        |
| <b>Host Species</b>                     | Homo sapiens                                                                                                                                                                                                                                         |
| <b>IgG type</b>                         | IgG1(E239D, M241L)                                                                                                                                                                                                                                   |
| <b>Reactivity</b>                       | Human                                                                                                                                                                                                                                                |
| <b>Target</b>                           | IGF-1R                                                                                                                                                                                                                                               |
| <b>Uniprot ID</b>                       | P08069                                                                                                                                                                                                                                               |
| <b>Description</b>                      | Anti-IGF-1R(teprotumumab biosimilar) mAb                                                                                                                                                                                                             |
| <b>Delivery</b>                         | In Stock                                                                                                                                                                                                                                             |
| <b>Storage &amp; Shipping</b>           | Store at -20°C to -80°C for 12 months in lyophilized form. After reconstitution, if not intended for use within a month, aliquot and store at -80°C (Avoid repeated freezing and thawing).Lyophilized antibodies are shipped at ambient temperature. |
| <b>Background</b>                       | Research grade biosimilar. Not for use in therapeutic or diagnostic procedures for humans or animals.                                                                                                                                                |
| <b>Usage</b>                            | Research use only                                                                                                                                                                                                                                    |
| <b>Conjugate</b>                        | Unconjugated                                                                                                                                                                                                                                         |

DIMA BIO PHARMACEUTICALS CONFIDENTIAL



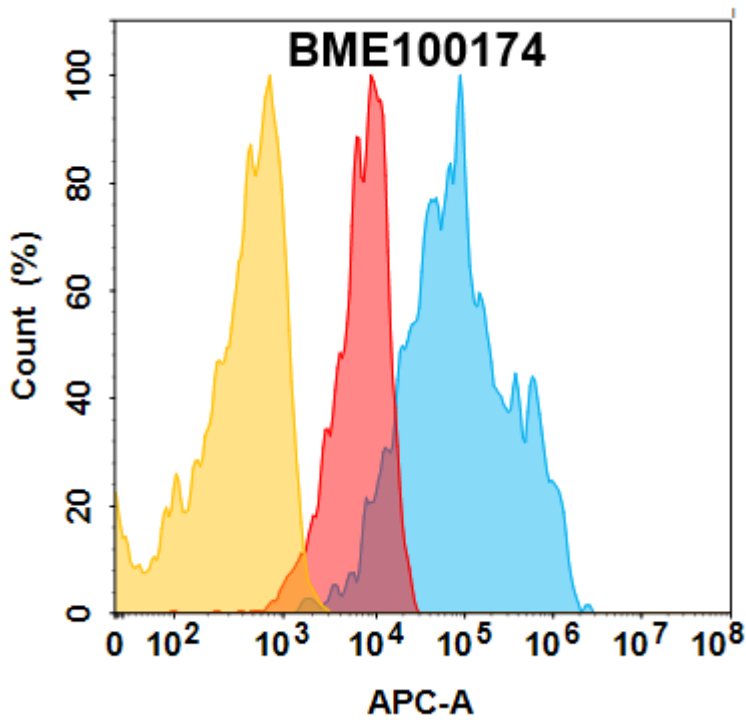


Figure 1. IGF-1R protein is highly expressed on the surface of Expi293 cell membrane. Flow cytometry analysis with 1 $\mu$ g/mL Anti-IGF-1R(teprotumumab biosimilar) mAb (BME100174) on Expi293 cells transfected with human IGF-1R (Blue histogram) or Expi293 transfected with irrelevant protein (Red histogram),and Isotype antibody on Expi293 transfected with irrelevant protein (Orange histogram).

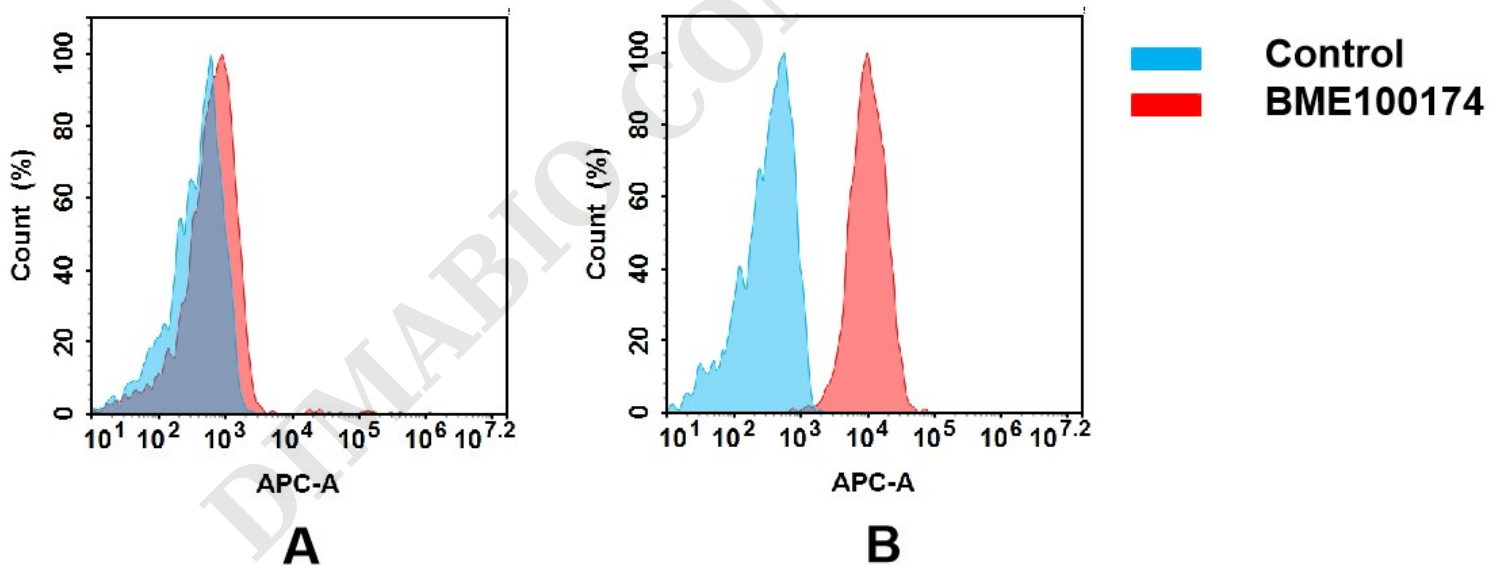


Figure 2. Flow cytometry analysis of antigen binding of anti-human IGF-1R mAb(BME100174).

(A) BME100174 does not bind to Jurkat cells that do not express IGF-1R.

(B) A clear peak shift of BME100174 was seen compared to the control when incubated with IGF-1R-expressing Hela cells, indicating strong binding of BME100174 to IGF-1R. Antibodies were incubated at 5  $\mu$ g/mL.



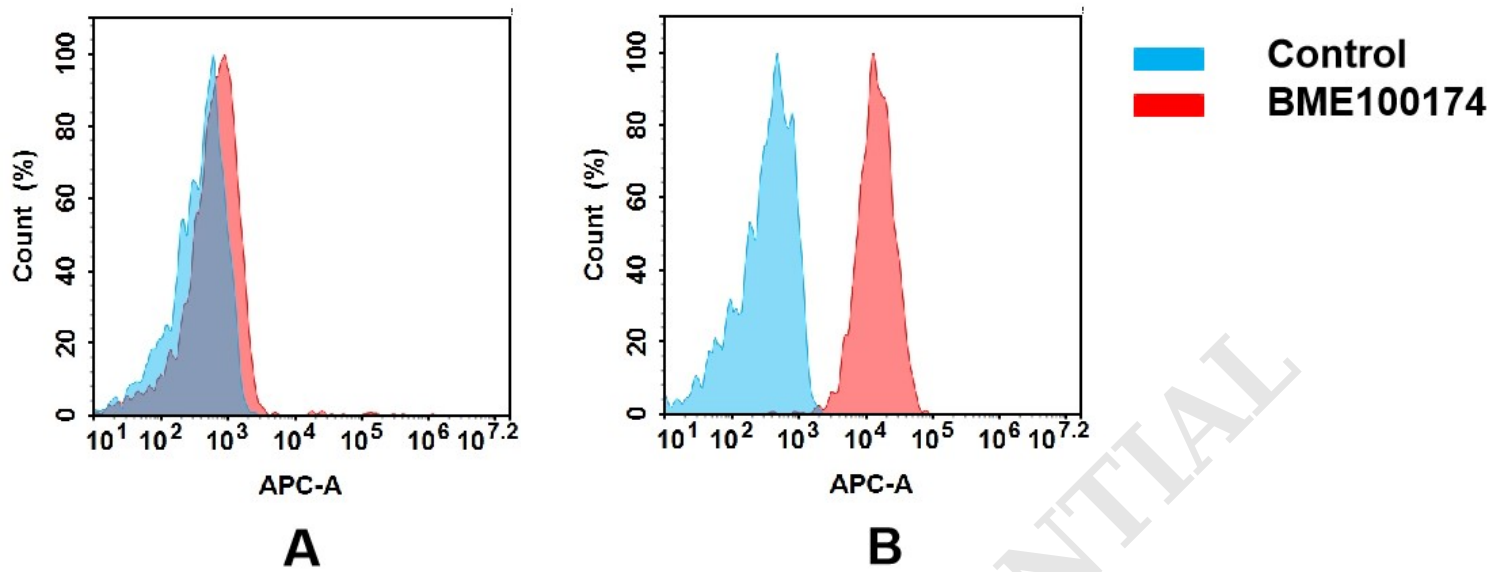


Figure 3. Flow cytometry analysis of antigen binding of anti-human IGF-1R mAb(BME100174).

(A) BME100174 does not bind to Jurkat cells that do not express IGF-1R.

(B) A clear peak shift of BME100174 was seen compared to the control when incubated with IGF-1R-expressing MCF-7 cells, indicating strong binding of BME100174 to IGF-1R. Antibodies were incubated at 5  $\mu$ g/mL.

DIMABIO CONFIDENTIAL

