

**PRODUCT INFORMATION**

|   |   |
|---|---|
| <b>Common Name</b>                      | BI-505  |
| <b>Synonyms</b>                         | ICAM1;BB2;CD54;P3.58  |
| <b>Applications</b>                     | ELISA; Flow Cyt   |
| <b>Recommended Dilutions</b>            | ELISA 1:5000-10000; Flow Cyt 1:100  |
| <b>Formulation &amp; Reconstitution</b> | Lyophilized from sterile PBS, pH 7.4. Normally 5% - 8% trehalose is added as protectants before lyophilization. Please see Certificate of Analysis for specific instructions of reconstitution.   |
| <b>Host Species</b>                     | Homo sapiens  |
| <b>IgG type</b>                         | IgG1  |
| <b>Reactivity</b>                       | Human   |
| <b>Target</b>                           | ICAM-1  |
| <b>Uniprot ID</b>                       | P05362  |
| <b>Description</b>                      | Anti-ICAM-1 (bersanlimab biosimilar) mAb  |
| <b>Delivery</b>                         | In Stock  |
| <b>Storage &amp; Shipping</b>           | Store at -20°C to -80°C for 12 months in lyophilized form. After reconstitution, if not intended for use within a month, aliquot and store at -80°C (Avoid repeated freezing and thawing). Lyophilized proteins are shipped at ambient temperature. |
| <b>Background</b>                       | Research grade biosimilar. Not for use in therapeutic or diagnostic procedures for humans or animals.   |
| <b>Usage</b>                            | Research use only   |
| <b>Conjugate</b>                        | Unconjugated  |



## Anti-ICAM-1 (bersanlimab biosimilar) mAb ELISA

0.2  $\mu$ g of Human ICAM-1, mFc tagged protein per well

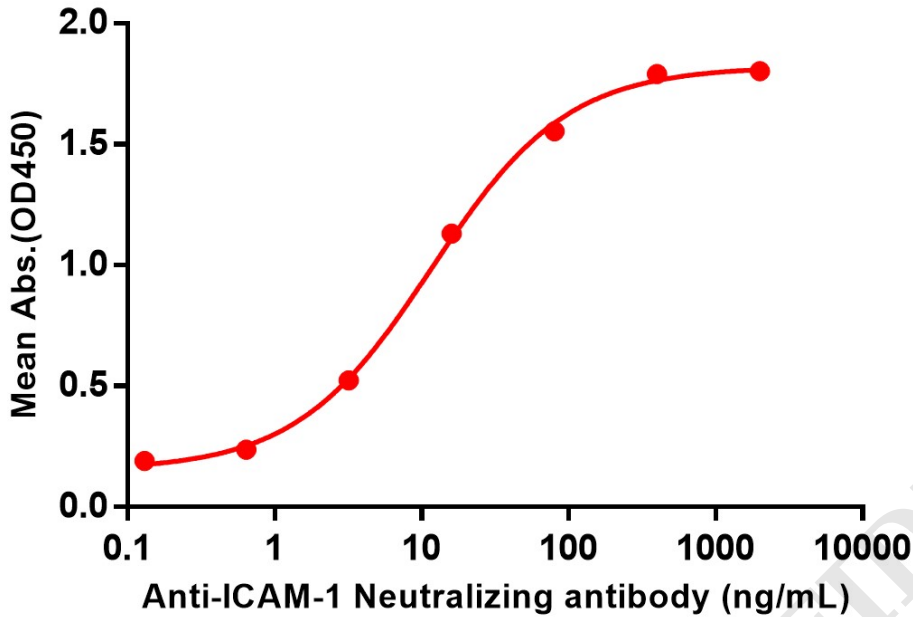


Figure 1. ELISA plate pre-coated by 2  $\mu$ g/ml (100  $\mu$ L/well) Human ICAM-1, mFc tagged protein (PME100062) can bind Anti-ICAM-1 Neutralizing antibody (BME100036) in a linear range of 0.64-80 ng/ml.

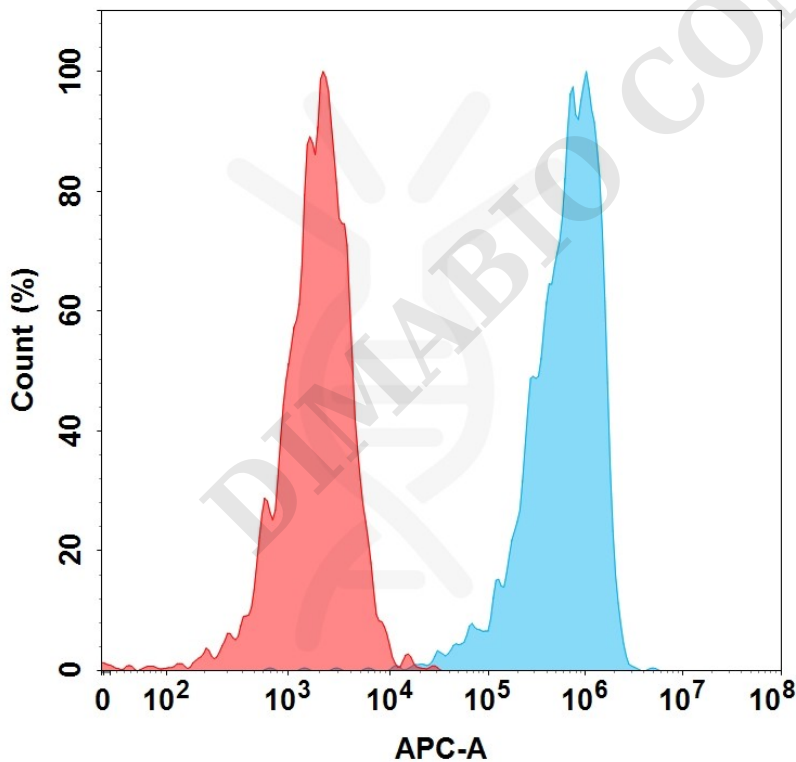


Figure 2. Flow cytometry analysis with 1  $\mu$ g/mL Anti-ICAM-1 (bersanlimab biosimilar) mAb (BME100036) on Expi293 cells transfected with Human ICAM-1 protein (Blue histogram) or Expi293 transfected with irrelevant protein (Red histogram).

