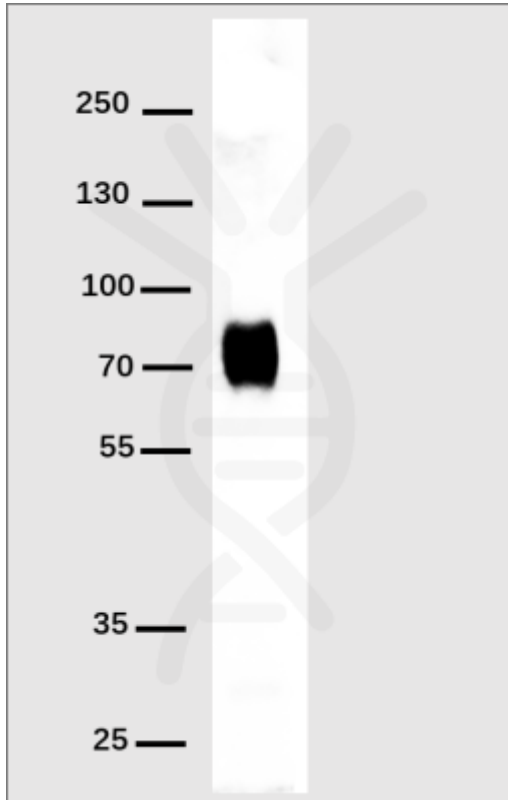


PRODUCT INFORMATION

Clone ID	DM1
Target	His Tag
Synonyms	his tag
Host Species	Rabbit
Description	Anti-His Tag Antibody(DM1); Rabbit mAb
Delivery	In Stock
IgG type	Rabbit IgG
Clonality	Monoclonal
Reactivity	Detects proteins containing accessible consecutive histidine regions. The antibody detects His tags localized at the amino- or carboxyl- terminus.
Applications	ELISA; WB
Recommended Dilutions	WB 1:1000
Purification	Purified from cell culture supernatant by affinity chromatography
Formulation & Reconstitution	Lyophilized from sterile PBS, pH 7.4. Normally 5 % - 8% trehalose is added as protectants before lyophilization. Please see Certificate of Analysis for specific instructions of reconstitution.
Storage & Shipping	Store at -20°C to -80°C for 12 months in lyophilized form. After reconstitution, if not intended for use within a month, aliquot and store at -80°C (Avoid repeated freezing and thawing). Lyophilized proteins are shipped at ambient temperature.
Background	The rabbit immune system generates antibody diversity and optimizes affinity. Anti-His Tag Antibody(DM1); Rabbit mAb is specific to six histidine tags placed at C-terminal and internal regions of fusion proteins. This antibody can greatly improve the effectiveness of several different kinds of immunoassays; helping researchers identify; detect; and purify polyhistidine fusion proteins in bacteria; insect cells; and mammalian cells.
Usage	Research use only
Conjugate	Unconjugated





Western blot analysis of his-tag fusion protein using His-Tag antibody (DME100001) at 1:1000 dilution.
Secondary antibody: HRP Goat Anti-Rabbit IgG (H L) at 1:5000 dilution.
His-tag fusion protein : 70kDa, 20ng per lane.
Blocking buffer: 5% nonfat dry milk in TBST.
Exposure time: 1s.

CONFIDENTIAL

