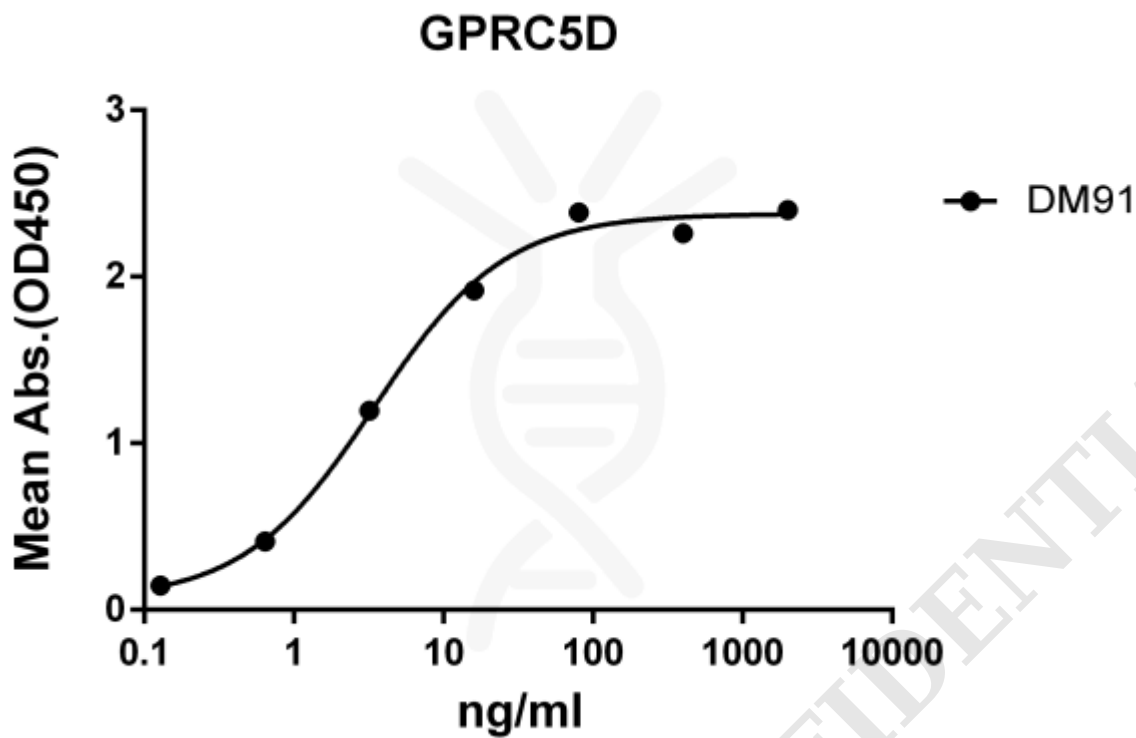


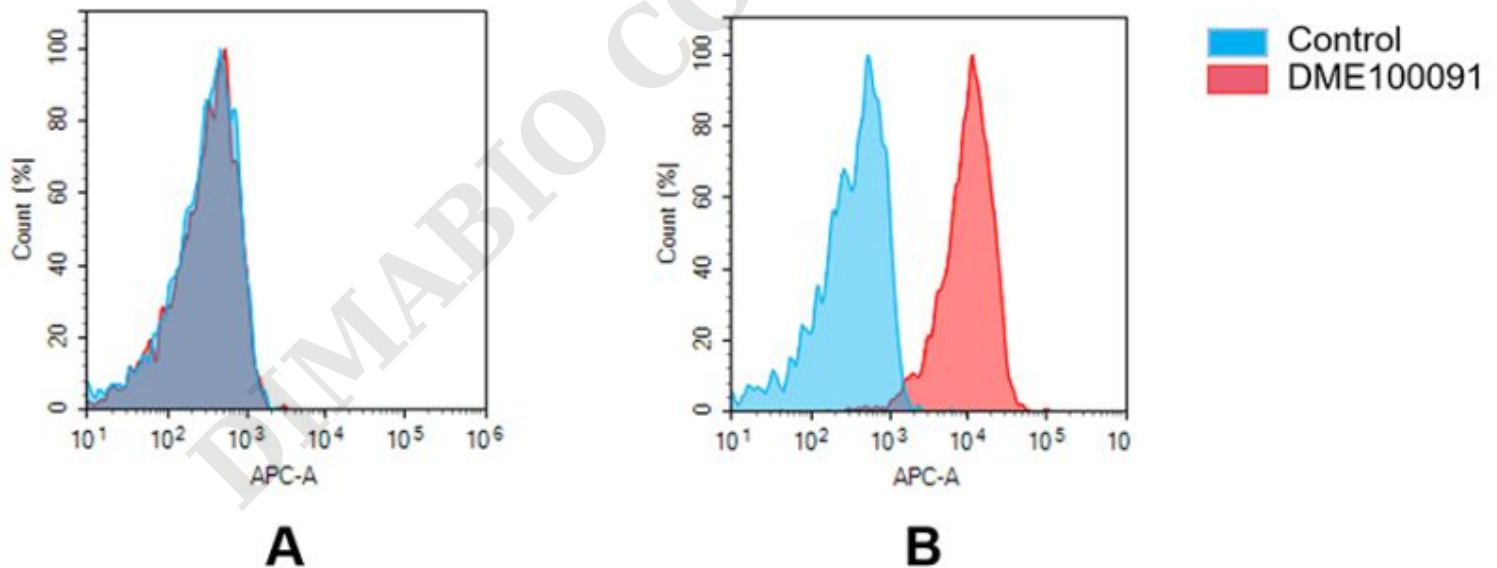
**PRODUCT INFORMATION**

<b>Clone ID</b>	DM91
<b>Target</b>	GPRC5D
<b>Synonyms</b>	GPRC5D
<b>Host Species</b>	Rabbit
<b>Description</b>	Anti-GPRC5D antibody(DM91); Rabbit mAb
<b>Delivery</b>	In Stock
<b>Uniprot ID</b>	Q9NZD1
<b>IgG type</b>	Rabbit IgG
<b>Clonality</b>	Monoclonal
<b>Reactivity</b>	Human
<b>Applications</b>	ELISA FC
<b>Recommended Dilutions</b>	ELISA 1:5000-10000; Flow Cyt 1:100
<b>Purification</b>	Purified from cell culture supernatant by affinity chromatography
<b>Formulation &amp; Reconstitution</b>	Lyophilized from sterile PBS, pH 7.4. Normally 5% - 8% trehalose is added as protectants before lyophilization. Please see Certificate of Analysis for specific instructions of reconstitution.
<b>Storage &amp; Shipping</b>	Store at -20°C to -80°C for 12 months in lyophilized form. After reconstitution, if not intended for use within a month, aliquot and store at -80°C (Avoid repeated freezing and thawing). Lyophilized proteins are shipped at ambient temperature.
<b>Background</b>	The protein encoded by this gene is a member of the G protein-coupled receptor family; however; the specific function of this gene has not yet been determined.
<b>Usage</b>	Research use only





**Figure 1.** ELISA plate pre-coated by 2  $\mu\text{g/ml}$  (100  $\mu\text{l/well}$ ) Human GPRC5D protein, hFc-His tagged protein ([getskuurl sku="PME100066"]) can bind Rabbit anti-GPRC5D monoclonal antibody (**clone: DM91**) in a linear range of 0.256-32 ng/ml.



**Figure 2 .** Flow cytometry analysis of antigen binding of rabbit anti-human GPRC5D mAb (DME100091). (A) DME100091 does not bind to Jurkat cells that do not express GPRC5D. (B) A clear peak shift of DME100091 was seen compared to the control when incubated with GPRC5D-expressing MM.1S cells, indicating strong binding of DME100091 to GPRC5D. Antibodies were incubated at 5  $\mu\text{g/mL}$ .

