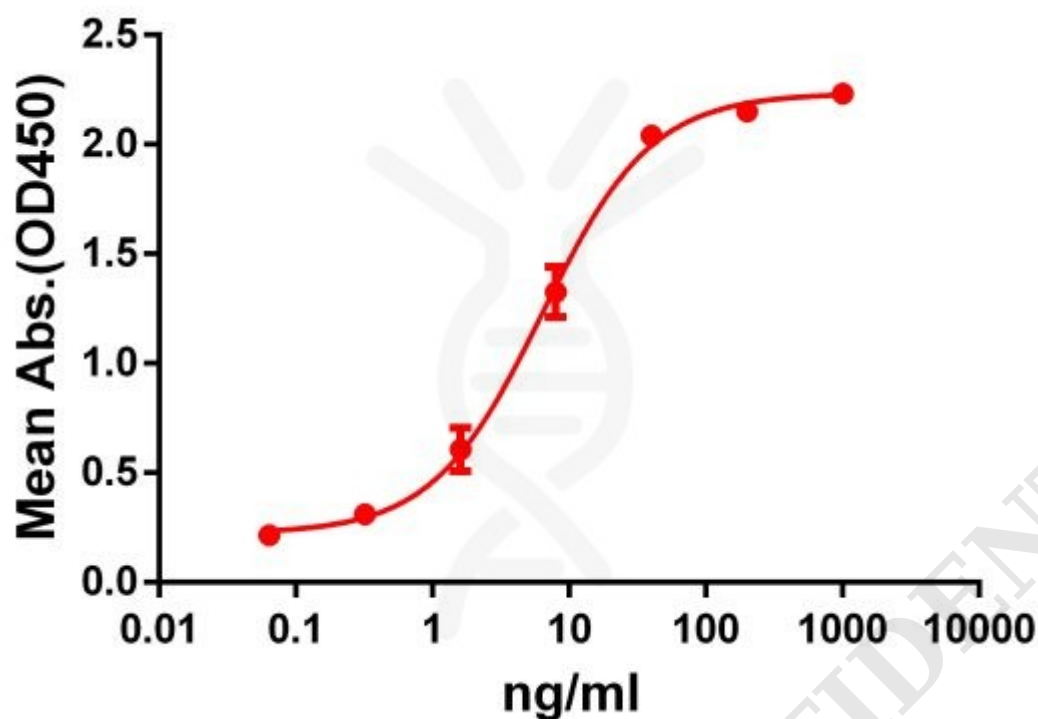


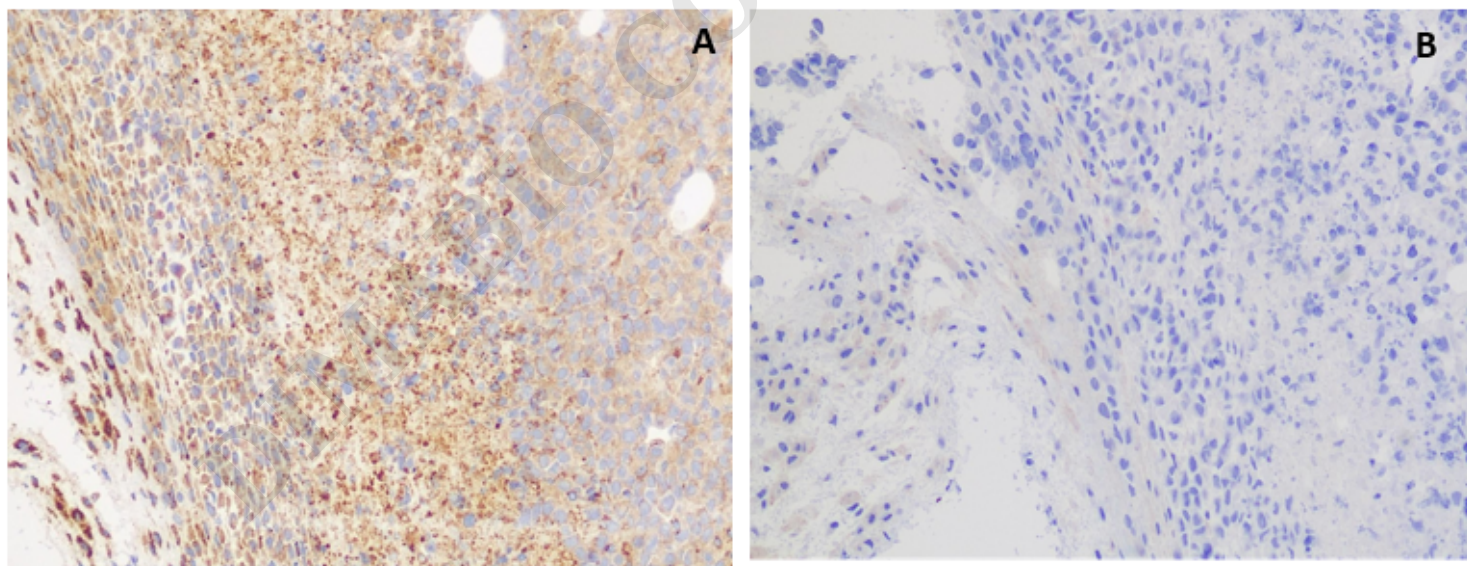
**PRODUCT INFORMATION**

<b>Clone ID</b>	DM61
<b>Target</b>	GPRC5D
<b>Synonyms</b>	GPRC5D
<b>Host Species</b>	Rabbit
<b>Description</b>	Anti-GPRC5D antibody(DM61); Rabbit mAb
<b>Delivery</b>	In Stock
<b>Uniprot ID</b>	Q9NZD1
<b>IgG type</b>	Rabbit IgG
<b>Clonality</b>	Monoclonal
<b>Reactivity</b>	Human
<b>Applications</b>	ELISA IHC
<b>Recommended Dilutions</b>	IHC 1:200, ELISA 1:5000-10000; Flow Cyt 1:100
<b>Purification</b>	Purified from cell culture supernatant by affinity chromatography
<b>Formulation &amp; Reconstitution</b>	Lyophilized from sterile PBS, pH 7.4. Normally 5% - 8% trehalose is added as protectants before lyophilization. Please see Certificate of Analysis for specific instructions of reconstitution. Store at -20°C to -80°C for 12 months in lyophilized form. After reconstitution, if not intended for use within a month, aliquot and store at -80°C (Avoid repeated freezing and thawing). Lyophilized proteins are shipped at ambient temperature.
<b>Storage &amp; Shipping</b>	
<b>Background</b>	The protein encoded by this gene is a member of the G protein-coupled receptor family; however; the specific function of this gene has not yet been determined.
<b>Usage</b>	Research use only
<b>Conjugate</b>	Unconjugated





**Figure 1.** ELISA plate pre-coated by 2  $\mu$ g/ml (100  $\mu$ l/well) Human GPRC5D protein, hFc-His tagged protein ([getskuurl sku="PME100066"]) can bind Rabbit anti-GPRC5D monoclonal antibody (clone: **DM61**) in a linear range of 1-100 ng/ml.



**Figure 2.** IHC staining of H929 cells **A.** with rabbit anti-GPRC5D mAb (Cat# DME100061) at 5.9  $\mu$ g/ml. **B.** with another anti-GPRC5D mAb (Cat# DME100090) at 8.8  $\mu$ g/ml. DME100061 can specifically react with GPRC5D in IHC application.

