

PRODUCT INFORMATION

Clone ID	DMC482
Target	C5AR2
Synonyms	C5L2; GPF77; GPR77
Host Species	Rabbit
Description	Anti-GPR77 antibody(DMC482); IgG1 Chimeric mAb
Delivery	In Stock
Uniprot ID	Q9P296
IgG type	Rabbit/Human Fc chimeric IgG1
Clonality	Monoclonal
Reactivity	Human
Applications	Flow Cyt
Recommended Dilutions	Flow Cyt 1:100
Purification	Purified from cell culture supernatant by affinity chromatography
Formulation & Reconstitution	Lyophilized from sterile PBS, pH 7.4. Normally 5 % - 8% trehalose is added as protectants before lyophilization. Please see Certificate of Analysis for specific instructions of reconstitution.
Storage & Shipping	Store at -20°C to -80°C for 12 months in lyophilized form. After reconstitution, if not intended for use within a month, aliquot and store at -80°C (Avoid repeated freezing and thawing). Lyophilized proteins are shipped at ambient temperature.
Background	This gene encodes a G-protein coupled receptor 1 family member involved in the complement system of the innate immune response. Unlike classical G-protein coupled receptors; the encoded protein does not associate with intracellular G-proteins. It may instead modulate signal transduction through the beta-arrestin pathway; and may alternatively act as a decoy receptor. This gene may be involved in coronary artery disease and in the pathogenesis of sepsis. Alternative splicing results in multiple transcript variants. [provided by RefSeq; Nov 2012]
Usage	Research use only



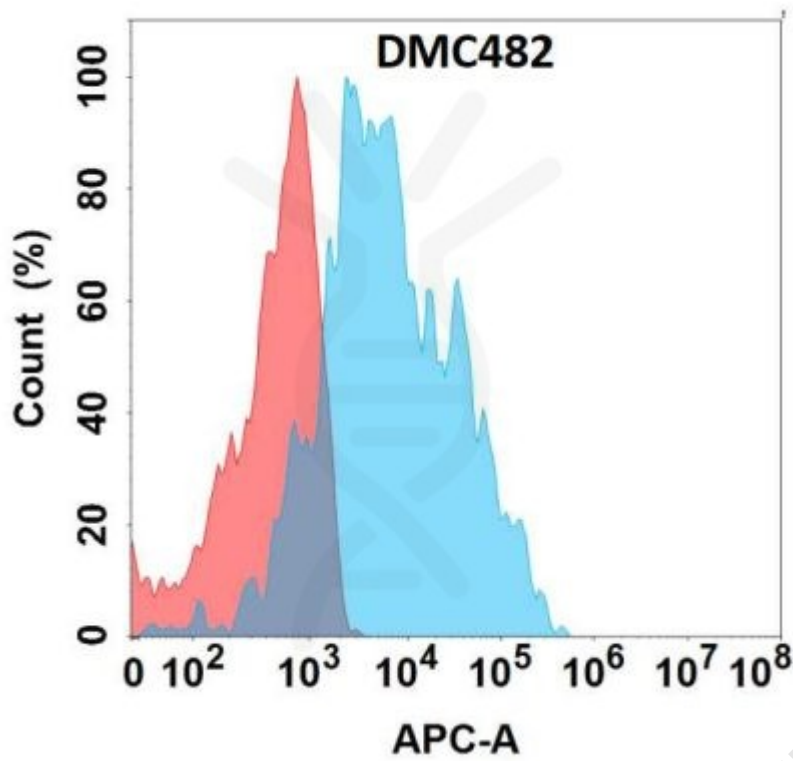


Figure 1. Flow cytometry analysis with Anti-GPR77 (DMC482) on Expi293 cells transfected with human GPR77 (Blue histogram) or Expi293 transfected with irrelevant protein (Red histogram).

