

PRODUCT INFORMATION

| | |
|---|---|
| Clone ID | DMC497 |
| Target | GPA33 |
| Synonyms | A33 |
| Host Species | Rabbit |
| Description | Anti-GPA33 antibody(DMC497); IgG1 Chimeric mAb |
| Delivery | In Stock |
| Uniprot ID | Q99795 |
| IgG type | Rabbit/Human Fc chimeric IgG1 |
| Clonality | Monoclonal |
| Reactivity | Human |
| Applications | Flow Cyt |
| Recommended Dilutions | Flow Cyt 1:100 |
| Purification | Purified from cell culture supernatant by affinity chromatography |
| Formulation & Reconstitution | Lyophilized from sterile PBS, pH 7.4. Normally 5 % - 8% trehalose is added as protectants before lyophilization. Please see Certificate of Analysis for specific instructions of reconstitution. |
| Storage & Shipping | Store at -20°C to -80°C for 12 months in lyophilized form. After reconstitution, if not intended for use within a month, aliquot and store at -80°C (Avoid repeated freezing and thawing). Lyophilized proteins are shipped at ambient temperature. |
| Background | The glycoprotein encoded by this gene is a cell surface antigen that is expressed in greater than 95% of human colon cancers. The open reading frame encodes a 319-amino acid polypeptide having a putative secretory signal sequence and 3 potential glycosylation sites. The predicted mature protein has a 213-amino acid extracellular region; a single transmembrane domain; and a 62-amino acid intracellular tail. The sequence of the extracellular region contains 2 domains characteristic of the CD2 subgroup of the immunoglobulin (Ig) superfamily. [provided by RefSeq; Jul 2008] |
| Usage | Research use only |



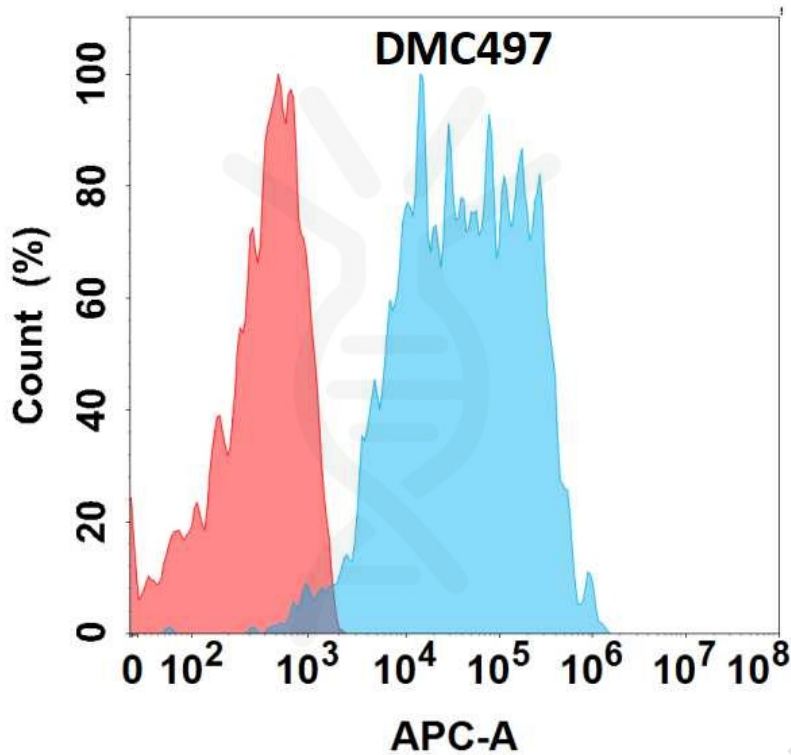


Figure 1. Flow cytometry analysis with Anti-GPA33 (DMC497) on Expi293 cells transfected with human GPA33 (Blue histogram) or Expi293 transfected with irrelevant protein (Red histogram).

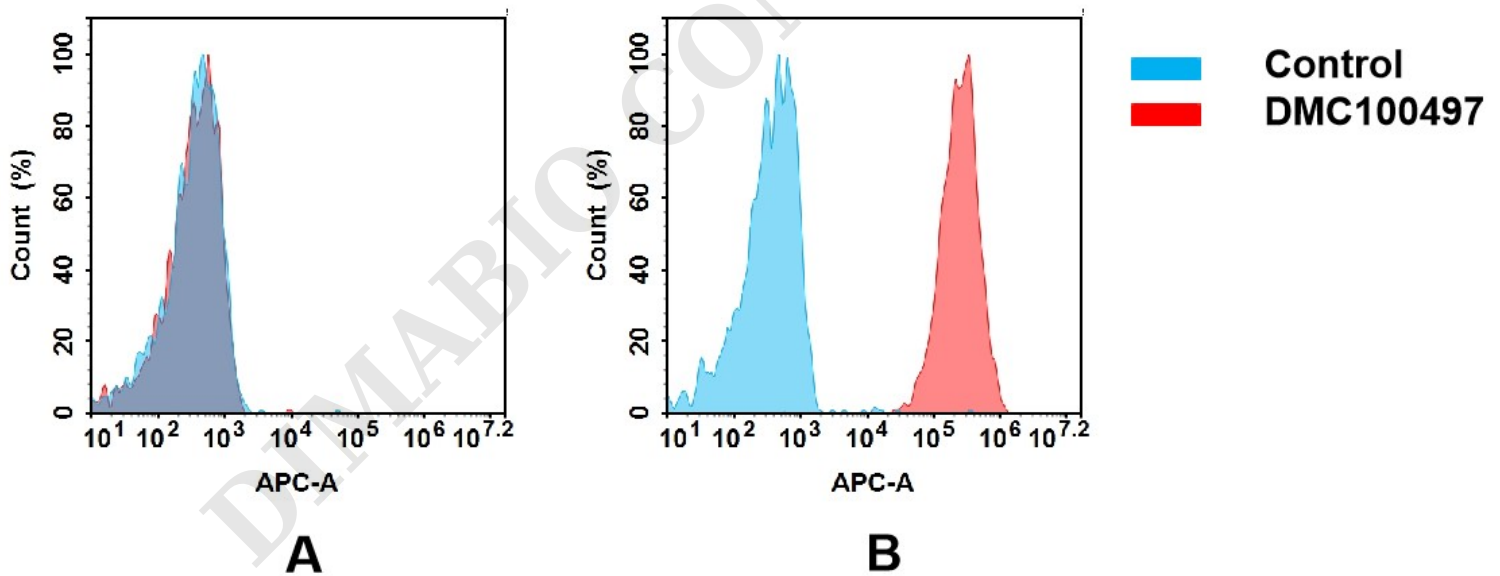


Figure 2. Flow cytometry analysis of antigen binding of anti-human GPA33 mAb(DMC100497).

(A) DMC100497 does not bind to 293T cells that do not express GPA33.

(B) A clear peak shift of DMC100497 was seen compared to the control when incubated with GPA33-expressing HT55 cells, indicating strong binding of DMC100497 to GPA33. Antibodies were incubated at 5 μ g/mL.

