

PRODUCT INFORMATION

Common Name	REGN5069
Conjugate	Unconjugated
Synonyms	GDNFR3
Applications	ELISA; Flow Cyt
Recommended Dilutions	ELISA 1:5000-10000; Flow Cyt 1:100
Formulation & Reconstitution	Lyophilized from sterile PBS, pH 7.4. Normally 5% - 8% trehalose is added as protectants before lyophilization. Please see Certificate of Analysis for specific instructions of reconstitution.
Host Species	Homo sapiens
IgG type	IgG4
Reactivity	Human
Target	GFRA3
Uniprot ID	O60609
Description	Anti-GFRA3(nadecnemab biosimilar) mAb
Delivery	In Stock
Storage & Shipping	Store at -20°C to -80°C for 12 months in lyophilized form. After reconstitution, if not intended for use within a month, aliquot and store at -80°C (Avoid repeated freezing and thawing). Lyophilized proteins are shipped at ambient temperature.
Background	Research grade biosimilar. Not for use in therapeutic or diagnostic procedures for humans or animals.
Usage	Research use only
DIMA Disclaimer	All DIMA recombinant antibodies are genuinely generated by DIMA Biotech. They are all under patent application. Any protein sequencing or reverse engineering attempt is prohibited. We are actively scrutinizing all patent application to ensure no IP infringement.



Anti-GFRA3 (nadecnemab biosimilar) mAb ELISA

0.2 μ g of Human GFRA3, His tagged protein per well

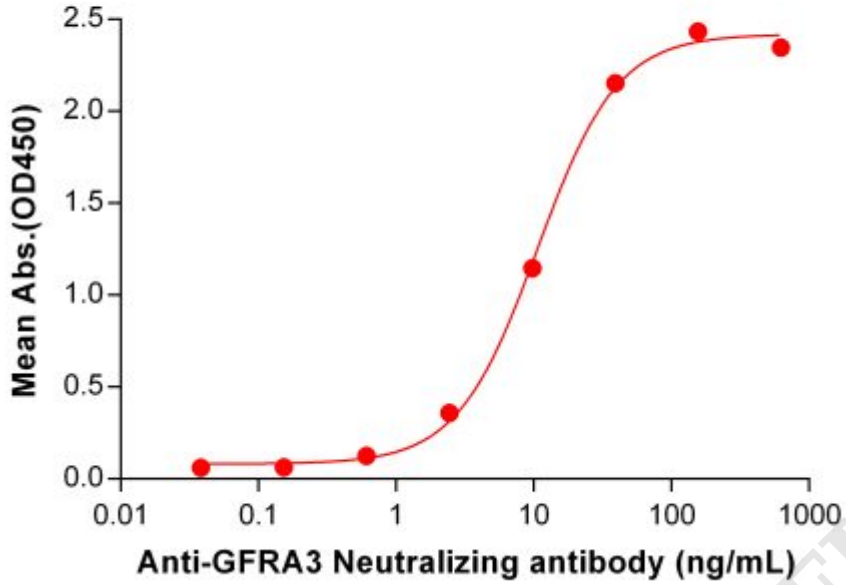


Figure 1. ELISA plate pre-coated by 2 μ g/mL (100 μ L/well) Human GFRA3 Protein, His Tag ([getskuurl sku="PME100620"]) can bind Anti-GFRA3 Neutralizing antibody (**BME100091**) in a linear range of 2.44–156.25 ng/mL.

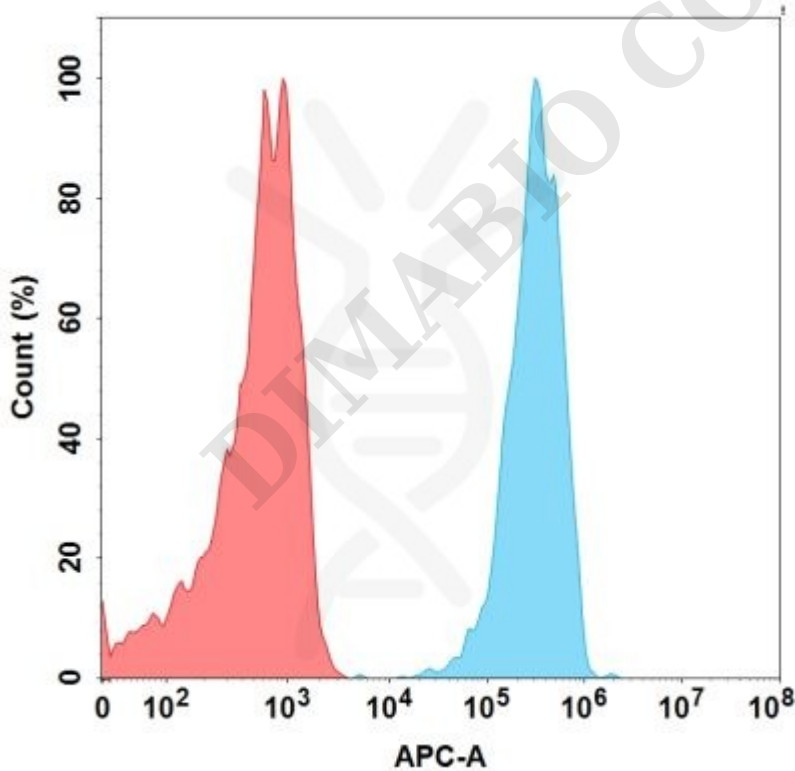


Figure 2. Flow cytometry analysis with 1 μ g/mL Anti-GFRA3 (nadecnemab biosimilar) mAb (BME100091) on Expi293 cells transfected with Human GFRA3 protein (Blue histogram) or Expi293 transfected with irrelevant protein (Red histogram).

