

PRODUCT INFORMATION

Common Name	PF-06946860
Synonyms	GDF-15;MIC-1;MIC1;NAG-1;PDF;PLAB;PTGFB
Applications	ELISA, Flow Cyt
Recommended Dilutions	ELISA 1:5000-10000, Flow Cyt 1:100
Formulation & Reconstitution	Lyophilized from sterile PBS, pH 7.4. Normally 5% - 8% trehalose is added as protectants before lyophilization. Please see Certificate of Analysis for specific instructions of reconstitution.
Host Species	Humanized
IgG type	IgG1
Reactivity	Human
Target	GDF15
Uniprot ID	Q99988
Description	Anti-GDF15(ponsegromab biosimilar) mAb
Delivery	In Stock
Storage & Shipping	Store at -20°C to -80°C for 12 months in lyophilized form. After reconstitution, if not intended for use within a month, aliquot and store at -80°C (Avoid repeated freezing and thawing). Lyophilized proteins are shipped at ambient temperature.
Background	Research grade biosimilar. Not for use in therapeutic or diagnostic procedures for humans or animals.
Usage	Research use only

DIMA BIO PHARMACEUTICAL



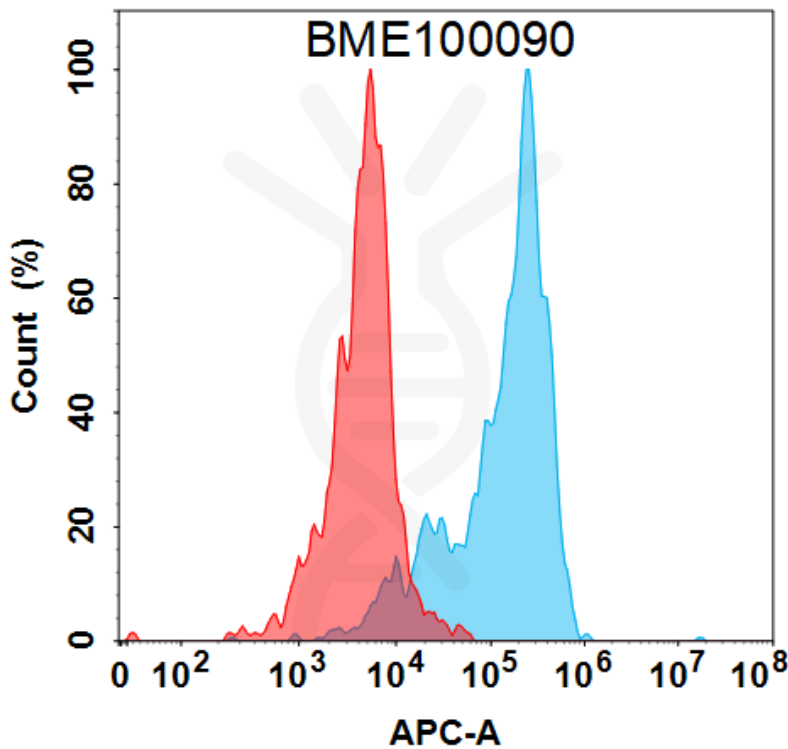


Figure 1. Flow cytometry analysis under cell membrane permeable condition with 1 $\mu\text{g}/\text{mL}$ Anti-GDF15 (ponsegromab biosimilar) mAb (BME100090) on Expi293 cells transfected with Human GDF15 protein (Blue histogram) or Expi293 transfected with irrelevant protein (Red histogram).

Anti-GDF15(ponsegromab biosimilar) mAb ELISA

0.2 μg of Human GDF15, hFc tagged protein per well

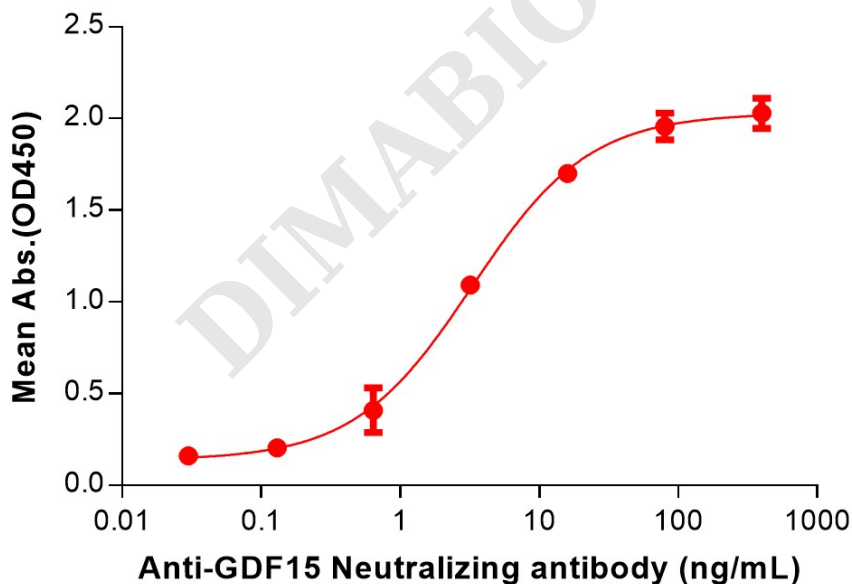


Figure 2. ELISA plate pre-coated by 2 $\mu\text{g}/\text{mL}$ (100 $\mu\text{L}/\text{well}$) Human GDF15 Protein, hFc Tag (PME100628) can bind Anti-GDF15(ponsegromab biosimilar) mAb (BME100090) in a linear range of 0.64–80 ng/mL. In order to specifically detect BME100090, mouse anti-human Fab-specific antibody was used as detection antibody.

